

A. System Overview

B1. Cable Ties

B2. Cable Accessories

B3. Stainless Steel

C1. Wiring Duct

C2. Surface Raceway

C3. Abrasion Protection

C4. Cable Management

D1. Terminals

D2. Power & Grounding Connectors

E1. Labeling System

E2. Labels

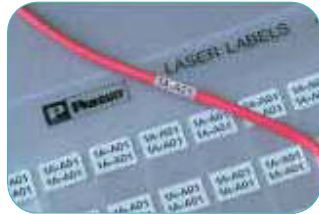
E3. Pre-Printed & Write-On Markers

E4. Lockout/Tagout & Safety Solutions

F. Index

## LABELING SYSTEMS

*PANDUIT* is a global leader in reliable and innovative solutions for identification and safety. Products are engineered for a wide variety of industries and applications - including electrical, electronics, industrial, and network. *PANDUIT* provides enhanced productivity, reliability, and value with leading-edge software development, materials and equipment by designing and manufacturing a full line of labeling products, software and printers to assist you with your labeling requirements.



**World-class quality – ISO 9001 and ISO 14001**

**High performance and reliability**

**Wide variety of system solutions to meet the most demanding requirements**

**Meet and exceed the requirements of UL, CSA, ISO, NEC and OSHA**

**Strong service and support network – distributor partners, knowledgeable sales people, expert technical support and world-class customer service**

*PANDUIT* provides a complete range of industrial products and tools – including portable labeling systems, desktop labeling systems, pre-printed labels, and safety systems. Use *PANDUIT* for all your identification needs for wire and cable, electrical and electronic devices, agency compliance, workplace safety and more.

Route/Protect  
Identify  
Terminate



### PRINTERS: THERMAL TRANSFER DESKTOP, HAND-HELD AND PORTABLE



PANDUIT desktop thermal transfer printers enable fast, high quality label production for all your identification requirements. Use PANDUIT labeling software and desktop thermal transfer printers to produce on-demand identification solutions quickly and economically. PANDUIT hand-held and portable printers are designed for flexibility. Programmed with advanced functionality, PANDUIT printers make custom labeling easy.



#### Desktop Printers

Compatible with PANDUIT® EASY-MARK™ Version 3.0 and PAN-MARK® 2.5 for WINDOWS^ labeling software (page E1.21)

Provide crisp, clear, high quality thermal transfer print

Compatible with WINDOWS^ based PC operating systems



#### Hand-Held and Portable Printers

Create labels at remote job sites

Available in crisp, clear, high quality thermal transfer print or dot matrix print

Easily identify moves, adds or changes



PANDUIT printers and our wide variety of labels provide solutions for all your project labeling needs.

^ WINDOWS is a registered trademark of Microsoft Corp. in the United States and other countries.

A. System Overview

B1. Cable Ties

B2. Cable Accessories

B3. Stainless Steel

C1. Wiring Duct

C2. Surface Raceway

C3. Abrasion Protection

C4. Cable Management

D1. Terminals

D2. Power & Grounding Connectors

E1. Labeling System

E2. Labels

E3. Pre-Printed & Write-On Markers

E4. Lockout/Tagout & Safety Solutions

F. Index

A. System Overview

## PANTHER™ LS8 Hand-Held Thermal Transfer Printer and Accessories

B1. Cable Ties

- Compact, rugged design includes reverse feeding and advanced cut-to-length capability in order to minimize label waste
- Includes large backlit display, adjustable cutter and USB interface
- 203 dpi thermal transfer printer creates crisp, clear legends with superior legibility

- Easy loading P1™ cassettes with automatic label recognition includes both label materials and ribbon
- Advanced functions include serialization, barcode printing, vertical and horizontal lines, rotated or vertical text, variety of font sizes/styles and a symbol library containing electrical, data communications and facility identification symbols

B2. Cable Accessories

- Used to print a wide variety of wire and cable labels, component labels and continuous tapes up to 1.00" (25.40mm) wide
- Powered by 6 AA alkaline batteries

B3. Stainless Steel



LS8

C1. Wiring Duct

C2. Surface Raceway

C3. Abrasion Protection

C4. Cable Management

D1. Terminals

D2. Power & Grounding Connectors

E1. Labeling System

E2. Labels

E3. Pre-Printed & Write-On Markers

E4. Lockout/Tagout & Safety Solutions

F. Index

Part Number	Part Description	Std. Pkg. Qty.
<b>LS8</b>	Includes LS8 printer, 1 cassette of S100X150VAC self-laminating labels, 6 AA alkaline batteries and quick reference card.	1
<b>LS8-KIT</b>	Includes LS8 printer, 1 cassette of S100X150VAC self-laminating labels, 6 AA alkaline batteries, hard carrying case, LS8-PCKIT, LS8-IB, LS8-WS and quick reference card.	1
<b>LS8-ACS*</b>	120 VAC power adapter for North America.	1
<b>LS8-PCKIT</b>	Includes USB cable and PC interface software for importing data, system upgrades or printing from a computer.	1
<b>LS8-CASE</b>	Hard carrying case.	1
<b>LS8-CLN</b>	Cleaning cassette.	1
<b>LS8-IB</b>	Protective impact bumper.	1
<b>LS8-WS</b>	Wrist strap.	1

\*Cannot be used to charge batteries.



LS8-KIT

## PANTHER™ LS8 Hand-Held Thermal Transfer Printer Cassettes

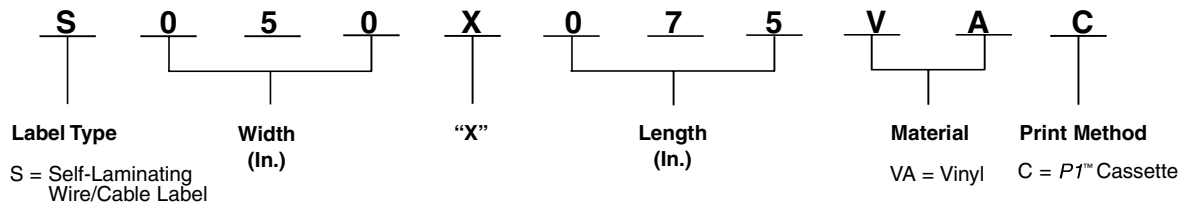
### P1™ Self-Laminating Label Cassettes

- Labels offer crisp, clear legends with superior legibility
- Meets UL Standard 2043 suitable for use in air handling spaces

- Self-laminating labels for wire/cable labeling include a colored print-on area and clear overlamine to protect the legend for clear and durable identification



### Part Number System for Wire/Cable Labeling



### Material/Print Method Selection Chart

Material	Print Method	Temperature Range	Features
Self-Laminating Vinyl, White Print-On (VA)	P1™ Cassette	-40°F to 200°F (-40°C to 93°C)	Indoor/outdoor rated; thin and conformable; preferred material for most general wire/cable labeling.

Part Number	Part Description	Width		Length		Print-On Height		Min. Cable O.D.		Max. Cable O.D.		Std. Pkg. Qty.	Std. Ctn. Qty.
		In.	mm	In.	mm	In.	mm	In.	mm	In.	mm		
S050X075VAC	White print-on area, vinyl label for 18-14 AWG wires, 450/roll.	.50	12.70	.75	19.05	.25	6.35	.08	2.02	.16	4.04	1	10
S050X125VAC	White print-on area, vinyl label for 12-10 AWG wires, 225/roll.	.50	12.70	1.25	31.75	.38	9.65	.12	3.07	.28	7.03	1	10
S050X150VAC	White print-on area, vinyl label for Cat 5e/Cat 6 cable, 200/roll.	.50	12.70	1.50	38.10	.50	12.70	.16	4.04	.32	8.09	1	10
S100X075VAC	White print-on area, vinyl label for 18-14 AWG wires, 450/roll.	1.00	25.40	.75	19.05	.25	6.35	.08	2.02	.16	4.04	1	10
S100X125VAC	White print-on area, vinyl label for 12-10 AWG wires, 225/roll.	1.00	25.40	1.25	31.75	.38	9.65	.12	3.07	.28	7.03	1	10
S100X150VAC	White print-on area, vinyl label for Cat 5e/Cat 6 cable, 200/roll.	1.00	25.40	1.50	38.10	.50	12.70	.16	4.04	.32	8.09	1	10
S100X225VAC	White print-on area, vinyl label for 8-4 AWG wires, 125/roll.	1.00	25.40	2.25	57.15	.75	19.05	.24	6.06	.48	12.13	1	10
S100X400VAC	White print-on area, vinyl label for 2-1 AWG wires, 75/roll.	1.00	25.40	4.00	101.60	1.00	25.40	.32	8.09	.95	24.26	1	10
S100X650VAC	White print-on area, vinyl label for 1/0-250 MCM wires, 50/roll.	1.00	25.40	6.50	165.10	1.50	38.10	.48	12.13	1.59	40.43	1	10

Order number of cassettes required.

A. System Overview

## **PANTHER™ LS8 Hand-Held Thermal Transfer Printer Cassettes**

### **P1™ Non-Laminated Label Cassettes**

B1. Cable Ties

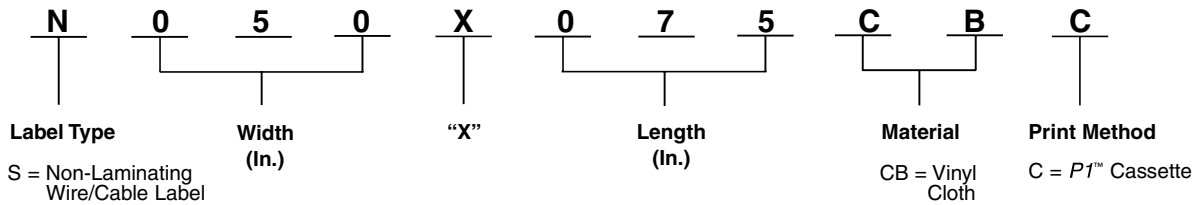
- Labels offer crisp, clear legends with superior legibility
- Use as a wrap around label or flag style marker for wire/cable labels
- Available in vinyl cloth material for long-term or temporary labeling

B2. Cable Accessories



B3. Stainless Steel

C1. Wiring Duct



C2. Surface Raceway

C3. Abrasion Protection

#### Material/Print Method Selection Chart

Material	Print Method	Temperature Range	Features
Vinyl Cloth White Print-On (CB)	P1™ Cassette	-50°F to 170°F (-46°C to 77°C)	Indoor/outdoor rated; thin conformable material with repositionable adhesive allows label to be removed and reused or used in temporary applications; provides durability, high temperature resistance and dimensional stability for rough or textured surfaces; resists oil and abrasion.

D1. Terminals

Part Number	Part Description	Width		Length		Min. Cable O.D.		Max. Cable O.D.		Std. Pkg. Qty.	Std. Ctn. Qty.
		In.	mm	In.	mm	In.	mm	In.	mm		
<b>N050X075CBC</b>	White, vinyl cloth label for 18-14 AWG wires, 175/roll.	.50	12.70	.75	19.05	.24	6.10	.51	12.95	1	10
<b>N050X150CBC</b>	White, vinyl cloth label for Cat 5e/Cat 6 cable, 100/roll.	.50	12.70	1.50	38.10	.48	12.19	1.02	25.91	1	10
<b>N100X125CBC</b>	White, vinyl cloth label for 12-10 AWG wires, 125/roll.	1.00	25.40	1.25	31.75	.40	10.16	.85	21.59	1	10
<b>N100X175CBC</b>	White, vinyl cloth label for 8-4 AWG wires, 75/roll.	1.00	25.40	1.75	44.45	.56	14.22	1.19	30.23	1	10

Order number of rolls required.

E1. Labeling System

### **P1™ Flag Style Label Cassettes**

E2. Labels



E3. Pre-Printed & Write-On Markers

Part Number	Part Description	Width		Length		Min. Cable O.D.		Max. Cable O.D.		Std. Pkg. Qty.	Std. Ctn. Qty.
		In.	mm	In.	mm	In.	mm	In.	mm		
<b>N050X150CBC</b>	White, vinyl cloth label for Cat 5e/Cat 6 cable, 100/roll.	.50	12.70	1.50	38.10	.06	1.52	.15	3.81	1	10
<b>N100X175CBC</b>	White, vinyl cloth label for 8-4 AWG wires, 75/roll.	1.00	25.40	1.75	44.45	.12	3.05	.22	5.58	1	10

E4. Lockout/Tagout & Safety Solutions

F. Index

Order number of cassettes required.

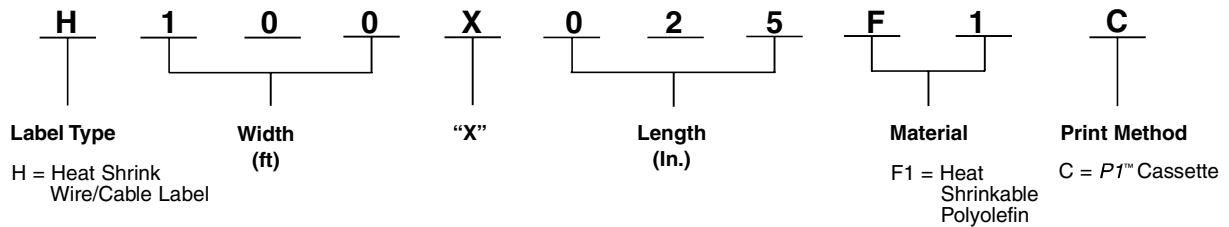
### **PANTHER™ LS8 Hand-Held Thermal Transfer Printer Cassettes**

#### **P1™ Heat Shrink Label Cassettes**

- Labels offer crisp, clear legends with superior legibility
- Meets UL Standard 224 for flammability and UL Standard 2043 suitable for use in air handling spaces
- Shrink ratio 3:1
- Continuous flattened polyolefin



#### **Part Number System for Wire/Cable Labeling**



#### **Material/Print Method Selection Chart**

Material	Print Method	Temperature Range	Features
Heat Shrinkable Polyolefin, White (F1)	P1™ Cassette	-22°F to 220°F (-30°C to 105°C)	Durable flattened polyolefin, high quality heat shrink wire/cable labels.

Part Number	Part Description	Length		Width		Min. Cable O.D.		Max. Cable O.D.		Std. Pkg. Qty.	Std. Ctn. Qty.
		ft	M	In.	mm	In.	mm	In.	mm		
<b>H000X025F1C</b>	White, 1/8" diameter polyolefin, 200/roll.	8.0	2.4	.25	6.35	.04	1.02	.13	3.30	1	10
<b>H000X034F1C</b>	White, 3/16" diameter polyolefin, 200/roll.	8.0	2.4	.34	8.64	.06	1.52	.19	4.83	1	10
<b>H000X044F1C</b>	White, 1/4" diameter polyolefin, 200/roll.	6.0	1.8	.44	11.18	.08	2.03	.25	6.35	1	10
<b>H000X084F1C</b>	White, 1/2" diameter polyolefin, 100/roll.	6.0	1.8	.84	21.34	.17	4.32	.50	12.75	1	10

Order number of cassettes required.

A. System Overview

B1. Cable Ties

B2. Cable Accessories

B3. Stainless Steel

C1. Wiring Duct

C2. Surface Raceway

C3. Abrasion Protection

C4. Cable Management

D1. Terminals

D2. Power & Grounding Connectors

E1. Labeling System

E2. Labels

E3. Pre-Printed & Write-On Markers

E4. Lockout/Tagout & Safety Solutions

F. Index

A. System Overview

## PANTHER™ LS8 Hand-Held Thermal Transfer Printer Cassettes

B1. Cable Ties

### P1™ Component Label Cassettes

- Labels offer crisp, clear legends with superior legibility
- Use for components, circuit boards and general labeling
- Available in polyester, non-adhesive polyester, polyolefin and vinyl cloth materials

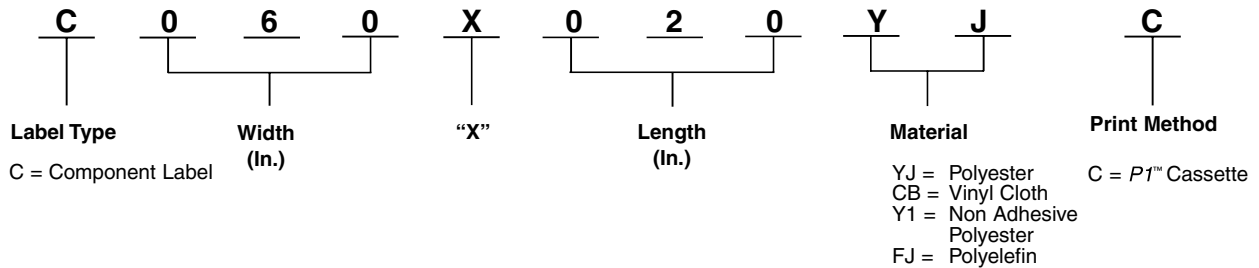
B2. Cable Accessories



B3. Stainless Steel

C1. Wiring Duct

### Part Number System for Component Labeling



C2. Surface Raceway

C3. Abrasion Protection

C4. Cable Management

### Material/Print Method Selection Chart

Material	Print Method	Temperature Range	Features
Polyester, White (YJ)	P1™ Cassette	-40°F to 200°F (-40°C to 93°C)	Indoor/outdoor rated; provides durability, high temperature resistance and dimensional stability, does not stretch or easily tear.
Vinyl Cloth, White (CB)		-50°F to 170°F (-46°C to 77°C)	Indoor/outdoor rated; thin conformable material with repositionable adhesive allows label to be removed and reused or used in temporary applications; provides durability; high temperature resistance and dimensional stability for rough or textured surfaces; resists oil and abrasion.

D1. Terminals

D2. Power & Grounding Connectors

E1. Labeling System

Part Number	Part Description	Width		Height		Std. Pkg. Qty.	Std. Ctn. Qty.
		In.	mm	In.	mm		
<b>C060X020YJC</b>	White, polyester label, 750/roll.	.60	15.24	.20	5.08	1	10
<b>C100X025YJC</b>	White, polyester label, 500/roll.	1.00	25.40	.25	6.35	1	10
<b>C100X050CBC</b>	White, vinyl cloth label, 500/roll.	1.00	25.40	.50	12.70	1	10
<b>C100X050YJC</b>	White, polyester label, 500/roll.	1.00	25.40	.50	12.70	1	10
<b>C150X075YJC</b>	White, polyester label, 500/roll.	1.50	38.10	.75	19.05	1	10
<b>C200X050CBC</b>	White, vinyl cloth label, 500/roll.	2.00	50.80	.50	12.70	1	10
<b>C200X050YJC</b>	White, polyester label, 500/roll.	2.00	50.80	.50	12.70	1	10
<b>C200X100YJC</b>	White, polyester label, 250/roll.	2.00	50.80	1.00	25.40	1	10

Order number of cassettes required.

E4. Lockout/Tagout & Safety Solutions

F. Index

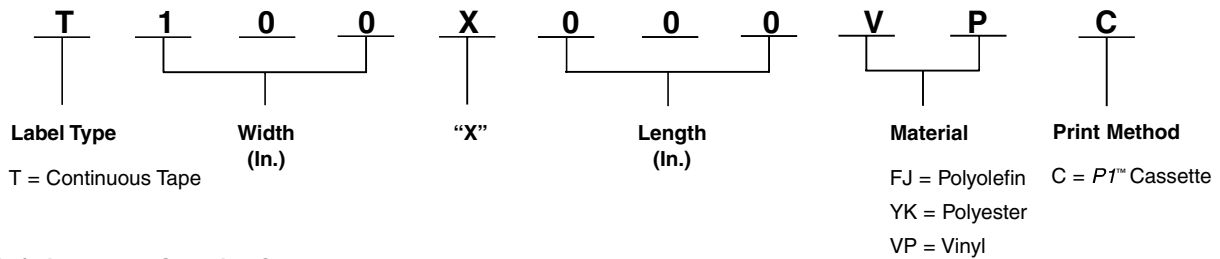
## PANTHER™ LS8 Hand-Held Thermal Transfer Printer Cassettes

### P1™ Continuous Tape Cassettes

- Tapes offer crisp, clear legends with superior legibility
- Print custom pipe markers, signs, bin markers and terminal block labels on demand
- Available in continuous polyester, polyolefin or vinyl



### Part Number System for Wire/Cable Labeling



### Material/Print Method Selection Chart

Material	Print Method	Temperature Range	Features
Polyolefin, White (FJ)	P1™ Cassette	-50°F to 120°F (-46°C to 49°C)	Indoor/outdoor rated; thin conformable material for general identification; excellent print quality.
Polyester, White Clear		-40°F to 302°F (-40°C to 150°C)	Indoor/outdoor rated; laminated label material protects legend from abrasion and chemicals; resistant to UV light chemical atmosphere and abrasion; excellent life and adhesion properties.
Vinyl, Blue (VQ) Green (VS) Orange (VU) Red (VW) White (VP) Yellow (VX)		-40°F to 200°F (-40°C to 93°C)	Indoor/outdoor rated; conformable material for flat applications and safety and facility identification; can be overlaminated to increase durability.

Part Number	Part Description	Height		Length		Std. Pkg. Qty.	Std. Ctn. Qty.
		In.	mm	ft	M		
T024X000FJC-BK	Black on white, polyolefin tape.	.24	6.10	25.0	7.6	1	10
T031X000FJC-BK	Black on white, polyolefin tape.	.31	7.87	25.0	7.6	1	10
T038X000FJC-BK	Black on white, polyolefin tape.	.38	9.65	25.0	7.6	1	10
T038X000VPC-BK	Black on white, vinyl tape.	.38	9.65	25.0	7.6	1	10
T038X000VYC-WH	White on black, vinyl tape.	.38	9.65	25.0	7.6	1	10
T038X000YKC-BK	Black on clear, polyester tape.	.38	9.65	25.0	7.6	1	10
T050X000VPC-BK	Black on white, vinyl tape.	.50	12.70	25.0	7.6	1	10
T050X000VQC-BK	Black on blue, vinyl tape.	.50	12.70	25.0	7.6	1	10
T050X000VSC-BK	Black on green, vinyl tape.	.50	12.70	25.0	7.6	1	10
T050X000VUC-BK	Black on orange, vinyl tape.	.50	12.70	25.0	7.6	1	10
T050X000VWC-BK	Black on red, vinyl tape.	.50	12.70	25.0	7.6	1	10
T050X000VYC-WH	White on black, vinyl tape.	.50	12.70	25.0	7.6	1	10
T050X000YKC-BK	Black on clear, polyester tape.	.50	12.70	25.0	7.6	1	10
T075X000VPC-BK	Black on white, vinyl tape.	.75	19.05	25.0	7.6	1	10
T075X000YKC-BK	Black on clear, polyester tape.	.75	19.05	25.0	7.6	1	10
T100X000VPC-BK	Black on white, vinyl tape.	1.00	25.40	25.0	7.6	1	10
T100X000VQC-BK	Black on blue, vinyl tape.	1.00	25.40	25.0	7.6	1	10
T100X000VQC-WH	White on blue, vinyl tape.	1.00	25.40	25.0	7.6	1	10
T100X000VSC-BK	Black on green, vinyl tape.	1.00	25.40	25.0	7.6	1	10

Order number of cassettes required.

Chart continues on page E1.8



A. System Overview

## P1™ Continuous Tape Cassettes (continued)

B1. Cable Ties

Part Number	Part Description	Height		Length		Std. Pkg. Qty.	Std. Ctn. Qty.
		In.	mm	ft	M		
T100X000VSC-WH	White on green, vinyl tape.	1.00	25.40	25.0	7.6	1	10
T100X000VUC-BK	Black on orange, vinyl tape.	1.00	25.40	25.0	7.6	1	10
T100X000VUC-WH	White on orange, vinyl tape.	1.00	25.40	25.0	7.6	1	10
T100X000VWC-BK	Black on red, vinyl tape.	1.00	25.40	25.0	7.6	1	10
T100X000VWC-WH	White on red, vinyl tape.	1.00	25.40	25.0	7.6	1	10
T100X000VXC-BK	Black on yellow, vinyl tape.	1.00	25.40	25.0	7.6	1	10
T100X000VXC-WH	White on yellow, vinyl tape.	1.00	25.40	25.0	7.6	1	10
T100X000VYC-WH	White on black, vinyl tape.	1.00	25.40	25.0	7.6	1	10
T100X000YKC-BK	Black on clear, polyester tape.	1.00	25.40	25.0	7.6	1	10

Order number of cassettes required.

C1. Wiring Duct

## PANAĀEA® LS7 Hand-Held Thermal Transfer Printer and Accessories

C2. Surface Raceway

- Compact, multi-purpose printer for electrical, network and facility identification
- 180 dpi thermal transfer printer creates crisp, clear legends with superior legibility
- Use to print a wide variety of wire and cable labels, component labels and continuous tapes up to .708" (18.00mm) wide

- Powered by 6 AA alkaline batteries
- Fast loading label cassette includes both label material and ribbon for easy label changes
- Advanced functions include repeat legend, serialization, vertical and horizontal lines, rotate text, symbol library and file memory

C3. Abrasion Protection



LS7

C4. Cable Management

Part Number	Part Description	Std. Pkg. Qty.	Std. Ctn. Qty.
LS7	Includes printer, 6 AA alkaline batteries, .708" (18.00mm) non-laminated black/white cassette, hardcase carrying case, wrist strap, label separator tool and operator's manual.	1	4
LS7-ACS*	120 VAC adapter.	1	6
LS7-CLN	Cleaning cassette.	1	20

\*Cannot be used to charge batteries.

For detailed information on the PANAĀEA® LS7 Hand-held Thermal Transfer Printer, request product bulletin SA-IDCB12.

D1. Terminals

## PANAĀEA® LS7 Hand-Held Thermal Transfer Printer Label Cassettes

D2. Power & Grounding Connectors



LS7 Label Cassette

E1. Labeling System

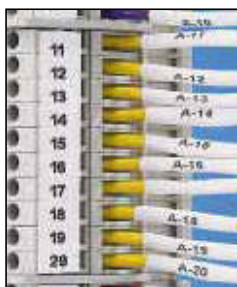
E2. Labels

### Material/Print Method Selection Guide

Material	Print Method	Temperature Range	Features
Polyester, White Clear Yellow* Orange* Red*	PANAĀEA® LS7 Printer	-40°F to 302°F (-40°C to 150°C)	Indoor/outdoor rated; laminated label material protects legend from abrasion and chemicals; resistant to UV light chemical atmosphere and abrasion; excellent life and adhesion properties.
Non-Laminated Polyester, White* Clear*			Indoor rated; general purpose material for wire/cable identification.

\*Not recognized by Underwriters Laboratories.

E3. Pre-Printed & Write-On Markers



Terminal Block Labeling

E4. Lockout/Tagout & Safety Solutions

F. Index

Part Number	Part Description	Height		Length		Std. Pkg. Qty.	Std. Ctn. Qty.
		In.	mm	ft	M		
LS7-25-1	Black/white, laminated polyester label cassette.	.236	6.00	26.2	8.0	1	20

### Laminated Adhesive Label Cassettes

### PANAĀEA® LS7 Hand-Held Thermal Transfer Printer Label Cassettes (continued)



Wire/Cable Labeling

Part Number	Part Description	Height		Length		Std. Pkg. Qty.	Std. Ctn. Qty.
		In.	mm	ft	M		
LS7-25-2	Black/clear, laminated polyester label cassette.	.236	6.00	26.2	8.0	1	20
LS7-38-1	Black/white, laminated polyester label cassette.	.354	9.00	26.2	8.0	1	20
LS7-38-2	Black/clear, laminated polyester label cassette.	.354	9.00	26.2	8.0	1	20
LS7-50-1	Black/white, laminated polyester label cassette.	.472	12.00	26.2	8.0	1	20
LS7-50-2	Black/clear, laminated polyester label cassette.	.472	12.00	26.2	8.0	1	20
LS7-75-4	Black/yellow, laminated polyester label cassette.	.708	18.00	26.2	8.0	1	20
LS7-75-5	Black/orange, laminated polyester label cassette.	.708	18.00	16.4	5.0	1	20
LS7-75-6	Black/red, laminated polyester label cassette.	.708	18.00	26.2	8.0	1	20
<b>Non-Laminated Adhesive Label Cassettes – For wire/cable and flat labeling</b>							
LS7-75NL-1	Black/white, non-laminated polyester label cassette.	.708	18.00	26.2	8.0	1	20
LS7-75NL-2	Black/clear, non-laminated polyester label cassette.	.708	18.00	26.2	8.0	1	20

Order number of cassettes required.  
For non-adhesive labeling solution, do not remove liner from label.

### VIPER™ LS6 Portable Thermal Transfer Printer and Accessories

- Rugged, industrial, multi-purpose printer for electrical, network and facility identification
- 203 dpi thermal transfer printer creates crisp, clear legends with superior legibility
- Use to print a wide variety of self-laminating labels, component labels, non-laminated labels, continuous tapes and heat shrink labels up to 2.00" wide
- Powered by a NiMH (Nickel Metal Hydride) rechargeable battery pack
- Fast loading ribbon cartridge allow user to slide, lock and go
- Advanced functions include serialization, barcode printing, vertical and horizontal lines, rotate text, date and time stamp, variety of font sizes and a symbol library containing over 40 electrical, network and facility identification symbols



Part Number	Part Description	Std. Pkg. Qty.	Std. Ctn. Qty.
LS6-KIT	Includes printer, AC power adapter/charger, LS6-RWBLK ribbon, hardside carrying case and operator's manual.	1	—
LS6-ACS2*	North America AC power adapter/charger.	1	—
LS6-BP	Replacement battery pack.	1	6
LS6-CLN	5 cleaning cards.	1	5
LS6-MAN-A**	Operator's manual – English.	1	10
LS6-PCKIT	PC interface kit includes serial cable and VIPERLINK™ software.	1	—
<b>Ribbons for use with the VIPER™ LS6 Portable Thermal Transfer Printer</b>			
LS6-RHBLK	Black, hybrid ribbon, 2.00" x 100.0'. Recommended for use with self-laminating, heat shrink, component and non-laminated labels.	1	6
LS6-RWBLK	Black, wax ribbon, 2.00" x 100.0'. Recommended for use with self-laminating, heat shrink and non-laminated labels.	1	6
LS6-RRBLK	Black, resin ribbon, 2.00" x 100.0'. Recommended for use with component labels and continuous tape.	1	6
LS6-RRWHT	White, resin ribbon, 2.00" x 75.0'. Recommended for use with continuous tape.	1	6

\*AC power adapter available for other countries, contact factory for more information.  
\*\*Other languages available, contact Customer Service for more information.

A. System Overview

B1. Cable Ties

B2. Cable Accessories

B3. Stainless Steel

C1. Wiring Duct

C2. Surface Raceway

C3. Abrasion Protection

C4. Cable Management

D1. Terminals

D2. Power & Grounding Connectors

E1. Labeling System

E2. Labels

E3. Pre-Printed & Write-On Markers

E4. Lockout/Tagout & Safety Solutions

F. Index

A. System Overview

## VIPER™ LS6 Portable Thermal Transfer Printer Labels

### Self-Laminating Labels

- Labels offer crisp, clear legends with superior legibility
- Meets UL Standard 2043 suitable for use in air handling spaces
- Self-laminating labels for wire/cable labeling include a colored print-on area and clear overlaminate to protect the legend for clear and durable identification

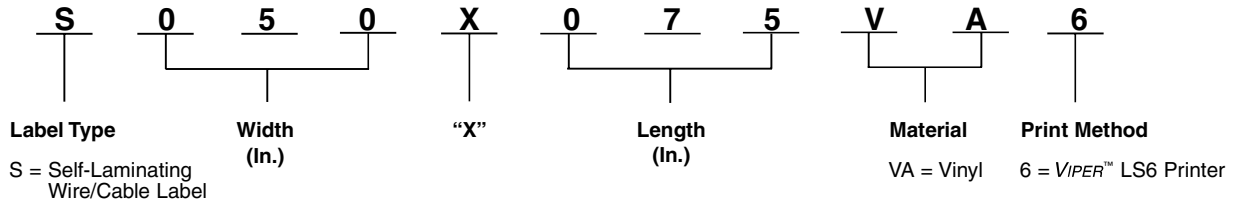


B1. Cable Ties

B2. Cable Accessories

B3. Stainless Steel

### Part Number System for Wire/Cable Labeling



C1. Wiring Duct

C2. Surface Raceway

C3. Abrasion Protection

### Material/Print Method Selection Chart

Material	Print Method	Temperature Range	Features
Self-Laminating Vinyl, White Print-On (VA)	VIPER™ LS6 (6) Printer	-40°F to 200°F (-40°C to 93°C)	Indoor/outdoor rated; thin and conformable; preferred material for most general wire/cable labeling.

C4. Cable Management

D1. Terminals

Part Number	Part Description	Width		Length		Print-On Height		Min. Cable O.D.		Max. Cable O.D.		Std. Pkg. Qty.	Std. Ctn. Qty.
		In.	mm	In.	mm	In.	mm	In.	mm	In.	mm		
<b>S050X075VA6Y</b>	White print-on area, vinyl label, 500/roll.	.50	12.70	.75	19.05	.25	6.35	.08	2.02	.16	4.04	1	10
<b>S050X125VA6Y</b>	White print-on area, vinyl label, 350/roll.	.50	12.70	1.25	31.75	.38	9.65	.12	3.07	.28	7.03	1	10
<b>S050X150VA6Y</b>	White print-on area, vinyl label, 250/roll.	.50	12.70	1.50	38.10	.50	12.70	.16	4.04	.32	8.09	1	10
<b>S100X075VA6Y</b>	White print-on area, vinyl label, 250/roll.	1.00	25.40	.75	19.05	.25	6.35	.08	2.02	.16	4.04	1	10
<b>S100X125VA6Y</b>	White print-on area, vinyl label, 250/roll.	1.00	25.40	1.25	31.75	.38	9.65	.12	3.07	.28	7.03	1	10
<b>S100X150VA6Y</b>	White print-on area, vinyl label, 250/roll.	1.00	25.40	1.50	38.10	.50	12.70	.16	4.04	.32	8.09	1	10
<b>S100X225VA6Y</b>	White print-on area, vinyl label, 150/roll.	1.00	25.40	2.25	57.15	.75	19.05	.24	6.06	.48	12.13	1	10
<b>S100X400VA6Y</b>	White print-on area, vinyl label, 100/roll.	1.00	25.40	4.00	101.60	1.00	25.40	.32	8.09	.95	24.26	1	10
<b>S100X650VA6Y</b>	White print-on area, vinyl label, 50/roll.	1.00	25.40	6.50	165.10	1.50	38.10	.48	12.13	1.59	40.43	1	10
<b>S200X225VA6Y</b>	White print-on area, vinyl label, 150/roll.	2.00	50.80	2.25	57.15	.75	19.05	.24	6.06	.48	12.13	1	10
<b>S200X400VA6Y</b>	White print-on area, vinyl label, 100/roll.	2.00	50.80	4.00	101.60	1.00	25.40	.32	8.09	.95	24.26	1	10
<b>S200X650VA6Y</b>	White print-on area, vinyl label, 50/roll.	2.00	50.80	6.50	165.10	1.50	38.10	.48	12.13	1.59	40.43	1	10

D2. Power & Grounding Connectors

E1. Labeling System

E2. Labels

E3. Pre-Printed & Write-On Markers

E4. Lockout/Tagout & Safety Solutions

F. Index

Order number of rolls required.  
Use with VIPER™ LS6 thermal transfer hybrid or wax ribbons found on [page E1.9](#).

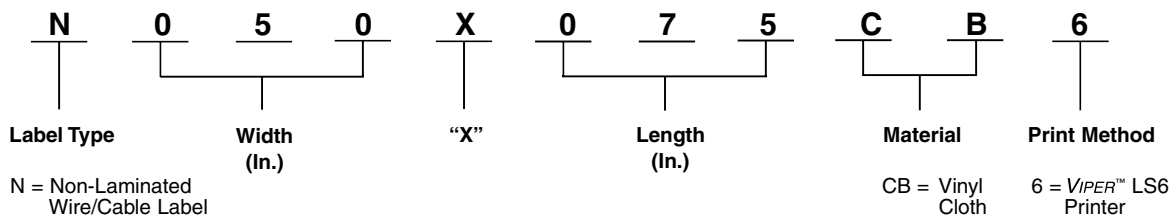
## VIPER™ LS6 Portable Thermal Transfer Printer Labels

### Non-Laminated Labels

- Labels offer crisp, clear legends with superior legibility
- Use as a wrap around label or flag style marker for wire/cable labels
- Available in vinyl cloth material for long-term or temporary labeling



### Part Number System for Wire/Cable Labeling



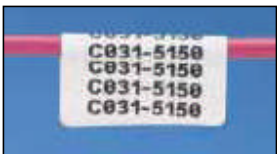
### Material/Print Method Selection Chart

Material	Print Method	Temperature Range	Features
Vinyl Cloth, White (CB)	VIPER™ LS6 (6) Printer	-50°F to 170°F (-46°C to 77°C)	Indoor/outdoor rated; thin conformable material with repositionable adhesive allows label to be removed and reused or used in temporary applications; provides durability, high temperature resistance and dimensional stability for rough or textured surfaces; resists oil and abrasion.

Part Number	Part Description	Width		Length		Min. Cable O.D.		Max. Cable O.D.		Std. Pkg. Qty.	Std. Ctn. Qty.
		In.	mm	In.	mm	In.	mm	In.	mm		
N050X075CB6	White, vinyl cloth label, 400/roll.	.50	12.70	.75	19.05	.24	6.10	.51	12.95	1	10
N050X150CB6	White, vinyl cloth label, 200/roll.	.50	12.70	1.50	38.10	.48	12.19	1.02	25.91	1	10
N100X125CB6	White, vinyl cloth label, 250/roll.	1.00	25.40	1.25	31.75	.40	10.16	.85	21.59	1	10
N100X175CB6	White, vinyl cloth label, 200/roll.	1.00	25.40	1.75	44.45	.56	14.22	1.19	30.23	1	10

Order number of rolls required.  
Use with VIPER™ LS6 thermal transfer hybrid or wax ribbons found on [page E1.9](#).

### Flag Style Labels



Part Number	Part Description	Width		Length		Min. Cable O.D.		Max. Cable O.D.		Std. Pkg. Qty.	Std. Ctn. Qty.
		In.	mm	In.	mm	In.	mm	In.	mm		
N050X150CB6	White, vinyl cloth label, 200/roll.	.50	12.70	1.50	38.10	.06	1.52	.15	3.81	1	10
N100X175CB6	White, vinyl cloth label, 200/roll.	1.00	25.40	1.75	44.45	.12	3.05	.22	5.58	1	10

Order number of rolls required.  
Use with VIPER™ LS6 thermal transfer hybrid or wax ribbons found on [page E1.9](#).

A. System Overview

B1. Cable Ties

B2. Cable Accessories

B3. Stainless Steel

C1. Wiring Duct

C2. Surface Raceway

C3. Abrasion Protection

C4. Cable Management

D1. Terminals

D2. Power & Grounding Connectors

E1. Labeling System

E2. Labels

E3. Pre-Printed & Write-On Markers

E4. Lockout/Tagout & Safety Solutions

F. Index

A. System Overview

## VIPER™ LS6 Portable Thermal Transfer Printer Labels

B1. Cable Ties

### Heat Shrink Labels

- Labels offer crisp, clear legends with superior legibility
- Meets UL Standard 224 for flammability and UL Standard 2043 suitable for use in air handling spaces
- Shrink ratio 3:1
- Pre-cut flattened polyolefin mounted on plastic carrier

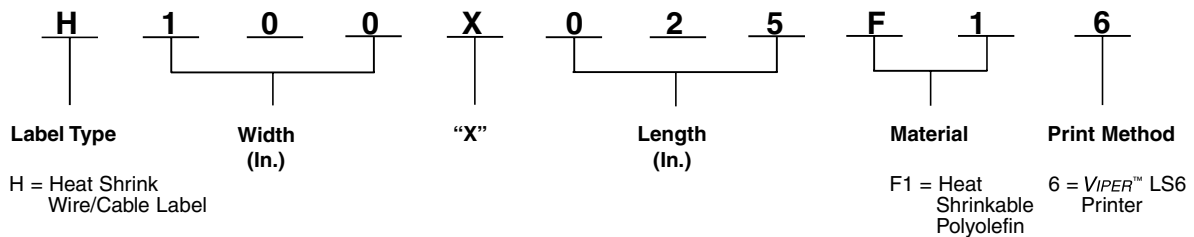
B2. Cable Accessories



B3. Stainless Steel

C1. Wiring Duct

### Part Number System for Wire/Cable Labeling



C2. Surface Raceway

C3. Abrasion Protection

C4. Cable Management

D1. Terminals

### Material/Print Method Selection Chart

Material	Print Method	Temperature Range	Features
Heat Shrinkable Polyolefin, White (F1)	VIPER™ LS6 (6) Printer	-22°F to 220°F (-30°C to 105°C)	Durable flattened polyolefin, high quality heat shrink wire/cable labels.

D2. Power & Grounding Connectors

E1. Labeling System

E2. Labels

E3. Pre-Printed & Write-On Markers

E4. Lockout/Tagout & Safety Solutions

F. Index

Part Number	Part Description	Width		Length		Min. Cable O.D.		Max. Cable O.D.		Std. Pkg. Qty.	Std. Ctn. Qty.
		In.	mm	In.	mm	In.	mm	In.	mm		
<b>H050X025F16</b>	White, 1/8" diameter polyolefin, 200/roll.	.50	12.70	.25	6.35	.04	1.02	.13	3.30	1	10
<b>H050X034F16</b>	White, 3/16" diameter polyolefin, 200/roll.	.50	12.70	.34	8.64	.06	1.52	.19	4.83	1	10
<b>H050X044F16</b>	White, 1/4" diameter polyolefin, 200/roll.	.50	12.70	.44	11.18	.08	2.03	.25	6.35	1	10
<b>H100X025F16</b>	White, 1/8" diameter polyolefin, 100/roll.	1.00	25.40	.25	6.35	.04	1.02	.13	3.30	1	10
<b>H100X034F16</b>	White, 3/16" diameter polyolefin, 100/roll.	1.00	25.40	.34	8.64	.06	1.52	.19	4.83	1	10
<b>H100X044F16</b>	White, 1/4" diameter polyolefin, 100/roll.	1.00	25.40	.44	11.18	.08	2.03	.25	6.35	1	10
<b>H100X084F16</b>	White, 1/2" diameter polyolefin, 100/roll.	1.00	25.40	.84	21.34	.17	4.32	.50	12.70	1	10
<b>H175X025F16</b>	White, 1/8" diameter polyolefin, 100/roll.	1.75	44.45	.25	6.35	.04	1.02	.13	3.30	1	10
<b>H175X034F16</b>	White, 3/16" diameter polyolefin, 100/roll.	1.75	44.45	.34	8.64	.06	1.52	.19	4.83	1	10
<b>H175X044F16</b>	White, 1/4" diameter polyolefin, 100/roll.	1.75	44.45	.44	11.18	.08	2.03	.25	6.35	1	10
<b>H175X084F16</b>	White, 1/2" diameter polyolefin, 100/roll.	1.75	44.45	.84	21.34	.17	4.32	.50	12.70	1	10

Order number of rolls required.  
Use with VIPER™ LS6 thermal transfer hybrid or wax ribbons found on [page E1.9](#).

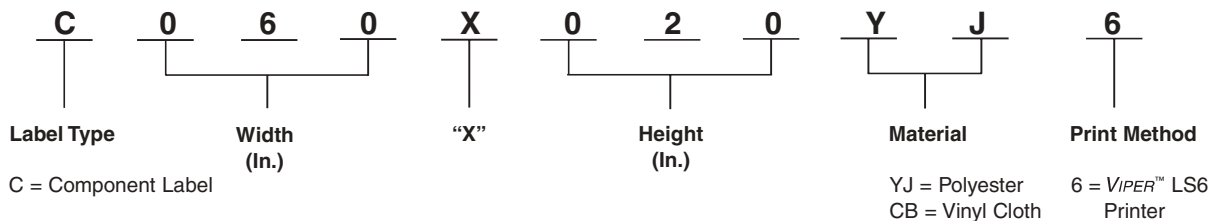
## VIPER™ LS6 Portable Thermal Transfer Printer Labels

### Component Labels

- Labels offer crisp, clear legends with superior legibility
- Use for components, circuit boards and general labeling
- Available in non-adhesive polyester, polyester, polyolefin and vinyl cloth materials



### Part Number System for Component Labeling



### Material/Print Method Selection Guide

Material	Print Method	Temperature Range	Features
Polyester, White (YJ)	VIPER™ LS6 (6) Printer	-40°F to 302°F (-40°C to 150°C)	Indoor/outdoor rated; provides durability, high temperature resistance and dimensional stability; does not stretch or easily tear.
Vinyl Cloth, White (CB)		-50°F to 170°F (-46°C to 77°C)	Indoor/outdoor rated; thin conformable material with repositionable adhesive allows label to be removed and reused or used in temporary applications; provides durability, high temperature resistance and dimensional stability for rough or textured surfaces; resists oil and abrasion.

Part Number	Part Description	Width		Height		Std. Pkg. Qty.	Std. Ctn. Qty.
		In.	mm	In.	mm		
C060X020YJ6	White, polyester label, 750/roll.	.60	15.24	.20	5.08	1	10
C100X025YJ6	White, polyester label, 500/roll.	1.00	25.40	.25	6.35	1	10
C100X050CB6	White, vinyl cloth label, 500/roll.	1.00	25.40	.50	12.70	1	10
C100X050YJ6	White, polyester label, 500/roll.	1.00	25.40	.50	12.70	1	10
C150X075YJ6	White, polyester label, 500/roll.	1.50	38.10	.75	19.05	1	10
C200X050CB6	White, vinyl cloth label, 500/roll.	2.00	50.80	.50	12.70	1	10
C200X050YJ6	White, polyester label, 500/roll.	2.00	50.80	.50	12.70	1	10
C200X100YJ6	White, polyester label, 250/roll.	2.00	50.80	1.00	25.40	1	10
C200X100FJ6	White, polyester label, 250/roll.	2.00	50.80	1.00	25.40	1	10

Order number of rolls required.  
Use with VIPER™ LS6 thermal transfer hybrid or wax ribbons on vinyl cloth labels or resin ribbons on polyester labels.  
Ribbons can be found on [page E1.9](#).

A. System Overview

B1. Cable Ties

B2. Cable Accessories

B3. Stainless Steel

C1. Wiring Duct

C2. Surface Raceway

C3. Abrasion Protection

C4. Cable Management

D1. Terminals

D2. Power & Grounding Connectors

E1. Labeling System

E2. Labels

E3. Pre-Printed & Write-On Markers

E4. Lockout/Tagout & Safety Solutions

F. Index

A. System Overview

## VIPER™ LS6 Portable Thermal Transfer Labels

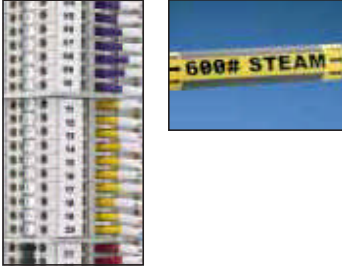
B1. Cable Ties

### Continuous Tapes

- Tapes offer crisp, clear legends with superior legibility
- Available in continuous polyester, polyolefin or vinyl
- Print custom pipe markers, signs, bin markers and terminal block labels on demand

B2. Cable Accessories

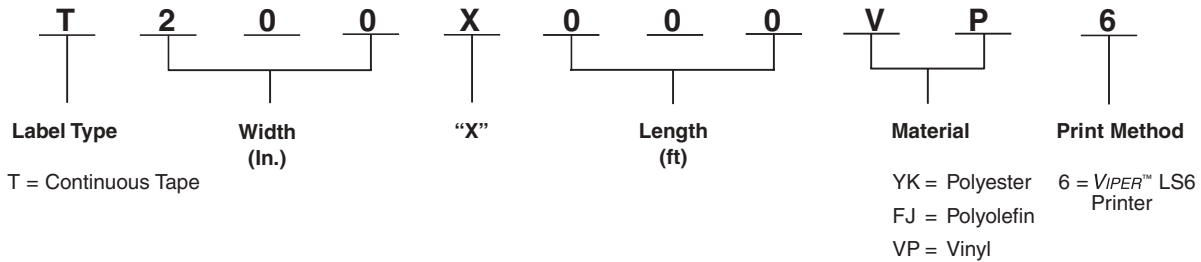
B3. Stainless Steel



C1. Wiring Duct

C2. Surface Raceway

### Part Number System for Continuous Tapes



C3. Abrasion Protection

C4. Cable Management

D1. Terminals

D2. Power & Grounding Connectors

### Material/Print Method Selection Chart

Material	Print Method	Temperature Range	Features
Polyester, Clear (YK)	VIPER™ LS6 (6) Printer	-40°F to 257°F (-40°C to 125°C)	Indoor/outdoor rated; provides durability, high temperature resistance and dimensional stability; does not stretch or easily tear.
Polyolefin, White (FJ)		-50°F to 120°F (46°C to 49°C)	Indoor/outdoor rated; thin conformable material for general identification; excellent print quality.
Vinyl, Blue (VQ) Green (VS) Orange (VU) Red (VV) White (VP) Yellow (VX)		-40°F to 200°F (40°C to 93°C)	Indoor/outdoor rated; conformable material for flat applications and safety and facility identification; can be overlaminated to increase durability.

E1. Labeling System

E2. Labels

E3. Pre-Printed & Write-On Markers

E4. Lockout/Tagout & Safety Solutions

F. Index

## Continuous Tapes (continued)

Part Number	Part Description	Height		Length		Std. Pkg. Qty.	Std. Ctn. Qty.
		In.	mm	ft	M		
T024X000FJ6	White, polyolefin tape.	.24	6.10	30.0	9.1	1	10
T031X000FJ6	White, polyolefin tape.	.31	7.87	30.0	9.1	1	10
T038X000FJ6	White, polyolefin tape.	.38	9.65	30.0	9.1	1	10
T050X000VP6Y	White, vinyl tape.	.50	12.70	50.0	15.2	1	10
T100X000VP6Y	White, vinyl tape.	1.00	25.40	50.0	15.2	1	10
T100X000VU6Y	Orange, vinyl tape.	1.00	25.40	50.0	15.2	1	10
T100X000VW6Y	Red, vinyl tape.	1.00	25.40	50.0	15.2	1	10
T100X000VX6Y	Yellow, vinyl tape.	1.00	25.40	50.0	15.2	1	10
T200X000VP6Y	White, vinyl tape.	2.00	50.80	50.0	15.2	1	10
T200X000VQ6Y	Blue, vinyl tape.	2.00	50.80	50.0	15.2	1	10
T200X000VS6Y	Green, vinyl tape.	2.00	50.80	50.0	15.2	1	10
T200X000VU6Y	Orange, vinyl tape.	2.00	50.80	50.0	15.2	1	10
T200X000VW6Y	Red, vinyl tape.	2.00	50.80	50.0	15.2	1	10
T200X000VX6Y	Yellow, vinyl tape.	2.00	50.80	50.0	15.2	1	10
T200X000YK6	Clear, polyester tape.	2.00	50.80	50.0	15.2	1	10

Order number of rolls required.

Use with VIPER™ LS6 thermal transfer resin ribbons found on [page E1.9](#).

## PAN-QUIK™ LS3E Hand-Held Dot Matrix Printer and Accessories

- Lightweight, multi-purpose printer for electrical and network identification
- 9 pin dot matrix printer creates clear legends that are easily read
- Use to print a wide variety of self-laminating labels, component labels, non-laminated labels and heat shrink labels up to 1.50" wide
- Powered by a rechargeable Ni-Cad battery pack
- Features the QUIK-KEY™ fast label formatting system for reduced set up time
- Advanced functions include serialization, variety of font sizes, rotate text, repeat legend and file memory



Part Number	Part Description	Std. Pkg. Qty.	Std. Ctn. Qty.
LS3E	Includes printer, battery pack, battery charger, printer ribbon, wrist strap and operator's manual.	1	—
LS3E-KIT	Includes printer, battery pack, battery charger, printer ribbon, wrist strap and operator's manual, plus AC power adapter and carrying case.	1	—
LS3EACS*	AC power adapter, charging pack, and power cord: used to power LS3E directly from power outlet and charge battery pack at the same time.	1	—
LS3E-BP	Replacement battery pack.	1	24
LS3-CASE	Plastic carrying case.	1	—
LS3-RIB	Replacement ribbon.	1	6
LS3E-MAN-A**	Replacement operator's manual, English.	1	10

\*AC power adapter available for other countries.

\*\*Other languages available.

For detailed information and a complete product offering for the PAN-QUIK™ LS3E Hand-held Dot Matrix Printer, request product bulletin SA101N389A-ID.

A. System Overview

B1. Cable Ties

B2. Cable Accessories

B3. Stainless Steel

C1. Wiring Duct

C2. Surface Raceway

C3. Abrasion Protection

C4. Cable Management

D1. Terminals

D2. Power & Grounding Connectors

E1. Labeling System

E2. Labels

E3. Pre-Printed & Write-On Markers

E4. Lockout/Tagout & Safety Solutions

F. Index



A. System Overview

## PAN-QUIK™ LS3E Hand-Held Dot Matrix Printer Labels

B1. Cable Ties

### Self-Laminating Labels

- Designed to identify all sizes of wires and cables quickly and economically
- Overlaminates protects legend for clear, permanent identification
- Vinyl material for indoor applications

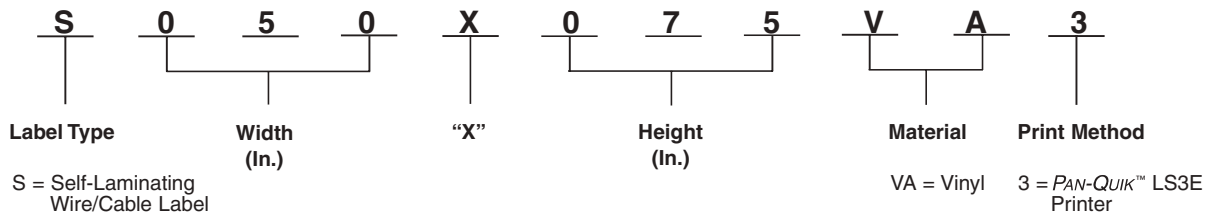
B2. Cable Accessories



B3. Stainless Steel

C1. Wiring Duct

### Part Number System for Wire/Cable Labeling



C2. Surface Raceway

C3. Abrasion Protection

C4. Cable Management

D1. Terminals

### Material/Print Method Selection Chart

Material	Print Method	Temperature Range	Features
Self-Laminating Vinyl, White Print-On (VA)	PAN-QUIK™ LS3E (3) Printer	-40°F to 200°F (-40°C to 93°C)	Indoor/outdoor rated; thin and conformable; preferred material for most general wire/cable labeling.

D2. Power & Grounding Connectors

E1. Labeling System

E2. Labels

E3. Pre-Printed & Write-On Markers

E4. Lockout/Tagout & Safety Solutions

F. Index

Part Number	Part Description	Width		Length		Print-On Height		Min. Cable O.D.		Max. Cable O.D.		Std. Pkg. Qty.	Std. Ctn. Qty.
		In.	mm	In.	mm	In.	mm	In.	mm	In.	mm		
<b>S050X075VA3Y</b>	White print-on area, vinyl label, 250/roll.	.50	12.70	.75	19.05	.25	6.35	.08	2.02	.16	4.04	1	10
<b>S050X125VA3Y</b>	White print-on area, vinyl label, 250/roll.	.50	12.70	1.25	31.75	.38	9.65	.12	3.07	.28	7.03	1	10
<b>S050X150VA3Y</b>	White print-on area, vinyl label, 250/roll.	.50	12.70	1.50	38.10	.50	12.70	.16	4.04	.32	8.09	1	10
<b>S100X075VA3Y</b>	White print-on area, vinyl label, 250/roll.	1.00	25.40	.75	19.05	.25	6.35	.08	2.02	.16	4.04	1	10
<b>S100X125VA3Y</b>	White print-on area, vinyl label, 250/roll.	1.00	25.40	1.25	31.75	.38	9.65	.12	3.07	.28	7.03	1	10
<b>S100X150VA3Y</b>	White print-on area, vinyl label, 250/roll.	1.00	25.40	1.50	38.10	.50	12.70	.16	4.04	.32	8.09	1	10
<b>S100X225VA3Y</b>	White print-on area, vinyl label, 150/roll.	1.00	25.40	2.25	57.15	.75	19.05	.24	6.06	.48	12.13	1	10

Order number of rolls required.

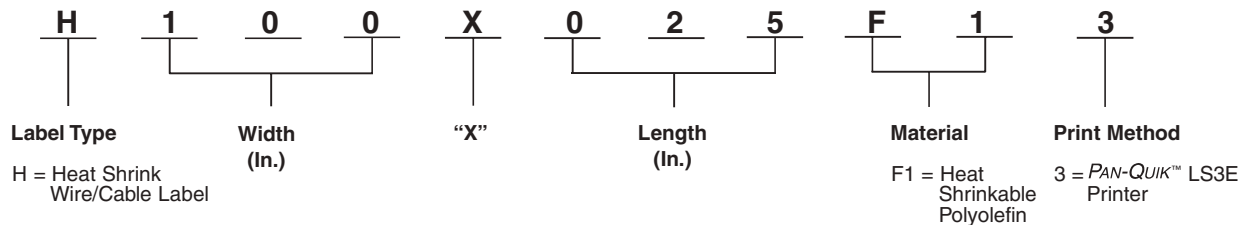
## PAN-QUIK™ LS3E Hand-Held Dot Matrix Printer Labels

### Heat Shrink Labels

- Labels offer crisp, clear legends with superior legibility
- Meets UL Standard 224 for flammability and UL Standard 2043 suitable for air handling spaces
- Shrink ratio 3:1
- Pre-cut flattened polyolefin mounted on plastic carrier



### Part Number System for Wire/Cable Labeling



### Material/Print Method Selection Chart

Material	Print Method	Temperature Range	Features
Heat Shrinkable Polyolefin, White (F1)	PAN-QUIK™ LS3E (3)	-22°F to 220°F (-30°C to 105°C)	Durable flattened polyolefin, high quality heat shrink wire/cable labels.

Part Number	Part Description	Width		Length		Min. Cable O.D.		Max. Cable O.D.		Std. Pkg. Qty.	Std. Ctn. Qty.
		In.	mm	In.	mm	In.	mm	In.	mm		
H050X025F13	White, 1/8" diameter polyolefin, 200/roll.	.50	12.70	.25	6.35	.04	1.02	.13	3.30	1	10
H100X025F13	White, 1/8" diameter polyolefin, 100/roll.	1.00	25.40	.25	6.35	.04	1.02	.13	3.30	1	10
H100X034F13	White, 3/16" diameter polyolefin, 100/roll.	1.00	25.40	.34	8.64	.06	1.52	.18	4.57	1	10
H100X044F13	White, 1/4" diameter polyolefin, 100/roll.	1.00	25.40	.44	11.18	.08	2.03	.25	6.35	1	10
H100X084F13	White, 1/2" diameter polyolefin, 100/roll.	1.00	25.40	.84	21.34	.17	4.32	.50	12.70	1	10

Order number of rolls required.

A. System Overview

B1. Cable Ties

B2. Cable Accessories

B3. Stainless Steel

C1. Wiring Duct

C2. Surface Raceway

C3. Abrasion Protection

C4. Cable Management

D1. Terminals

D2. Power & Grounding Connectors

E1. Labeling System

E2. Labels

E3. Pre-Printed & Write-On Markers

E4. Lockout/Tagout & Safety Solutions

F. Index

A. System Overview

## TDP43M Thermal Transfer Desktop Printer and Accessories

B1. Cable Ties

- Compact lightweight design enables use in office or remote locations
- 300 dpi thermal transfer printer creates crisp, clear legends with superior legibility

- *EASY-MARK™* labeling software and hybrid ribbon included with printer
- Compatible with most standard PCs and *PANDUIT® EASY-MARK™* or *PAN-MARK® 2.5* for WINDOWS^ labeling software

B2. Cable Accessories

- Up to 2.00" per second print speed for fast label production
- Use to print a wide variety of self-laminating labels, component labels, non-laminated labels, continuous tapes and heat shrink labels up to 4.00" wide

B3. Stainless Steel



TDP43M

C1. Wiring Duct

C2. Surface Raceway



TDP43M-CASE

C3. Abrasion Protection

C4. Cable Management

## Ribbons for Use with the TDP43M Thermal Transfer Desktop Printer

D1. Terminals

- **Hybrid** – Recommended for use with self-laminating, heat shrink, component and non-laminated labels
- **Wax** – Recommended/preferred for use with self-laminating and non-laminated labels

- **Resin** – Recommended for use with component labels and continuous tape
- TDP43M ribbons are also compatible with *PANDUIT PTR2/PTR2E* thermal transfer desktop printers

D2. Power & Grounding Connectors



E1. Labeling System

E2. Labels

E3. Pre-Printed & Write-On Markers

E4. Lockout/Tagout & Safety Solutions

F. Index

Part Number	Description	Std. Pkg. Qty.
<b>TDP43M</b>	300 dpi printer; includes printer, <i>PANDUIT® EASY-MARK™</i> Labeling Software, RMH4BL hybrid black ribbon, AC power adapter with US and Europlug power cords, manual and quick start card.	1
<b>TDP43M-RS</b>	External label roll stand – used to rear feed labels that are supplied on 3.00" cores, such as photoluminescent tape.	1
<b>TDP43M-CASE</b>	Hardside carrying case. Accommodates printer, AC power adapter, ribbons, printer cable, labels and tools.	1
<b>TDP43M-AC</b>	Replacement AC power adapter with power cord (US cord only).	1
<b>PTR-CLN</b>	Printer cleaning kit – contains bottle of cleaning solution with MSDS, cleaning pen, swabs, alcohol wipes and cleaning instructions.	1

^WINDOWS is a registered trademark of Microsoft Corp. in the United States and/or other countries.

D2. Power & Grounding Connectors

Part Number	Part Description	Height		Length		Std. Pkg. Qty.	Std. Ctn. Qty.
		In.	mm	ft	M		
<b>RMH2BL</b>	Black, hybrid thermal transfer ribbon. For use with self-laminating, component, heat shrink and non-laminated labels.	2.52	63.50	240.0	73.0	1	12
<b>RMH4BL</b>	Black, hybrid thermal transfer ribbon. For use with self-laminating, component, heat shrink and non-laminated labels.	4.33	110.00	240.0	73.0	1	12
<b>RMW2BL</b>	Black, wax thermal transfer ribbon. For use with self-laminating vinyl and non-laminated labels.	2.52	63.50	240.0	73.0	1	12
<b>RMW4BL</b>	Black, wax thermal transfer ribbon. For use with self-laminating and non-laminated labels.	4.33	110.00	240.0	73.0	1	12
<b>RMR2BL</b>	Black, resin thermal transfer ribbon. For use with component labels and continuous tape.	2.52	63.50	240.0	73.0	1	12
<b>RMR2WH</b>	White, resin thermal transfer ribbon. For use with component labels and continuous tape.	2.52	63.50	180.0	54.9	1	12
<b>RMR4BL*</b>	Black, resin thermal transfer ribbon. For use with component labels and continuous tape.	4.33	110.00	240.0	73.0	1	12

Order number of ribbons required.

\*Other colors available, replace BL (Black) with WH (White), BU (Blue), GR (Green) or RD (Red).

### TDP42H, TDP43H, TDP46H Thermal Transfer Desktop Printers

- Rugged, high speed industrial printer
- 203, 305 or 609 dpi thermal transfer printers create crisp, clear legends with superior legibility
- Up to 10.00" per second print speed for fast label production
- Use to print a wide variety of self-laminating labels, component labels, non-laminated labels, continuous tapes and heat shrink labels up to 4.00" wide



- *EASY-MARK™* labeling software and hybrid ribbon included with printer
- Compatible with most standard PCs and *PANDUIT® EASY-MARK™* or *PAN-MARK® 2.5* for WINDOWS^ labeling software

Part Number	Part Description	Std. Pkg. Qty.
TDP42H	203 dpi printer for high volume applications, <i>PANDUIT® EASY-MARK™</i> Labeling Software, RHH4BL-S hybrid black ribbon, AC power adapter and manual.	1
TDP43H	305 dpi printer for high volume applications, <i>PANDUIT® EASY-MARK™</i> Labeling Software, RHH4BL-S hybrid black ribbon, AC power adapter and manual.	1
TDP46H	609 dpi printer for high volume applications, <i>PANDUIT® EASY-MARK™</i> Labeling Software, RHH4BL-S hybrid black ribbon, AC power adapter and manual.	1

^WINDOWS is a registered trademark of Microsoft Corp. in the United States and/or other countries.

### Ribbons for use with the TDP42H, TDP43H and TDP46H Thermal Transfer Desktop Printers

- **Hybrid** – Recommended for use with self-laminating, heat shrink, component and non-laminated labels
- **Wax** – Recommended/preferred for use with self-laminating and non-laminated labels

- **Resin** – Recommended for use with component labels and continuous tape
- TDP42H, TDP43H and TDP46H ribbons are also compatible with *PANDUIT PTR3/PTR3E* thermal transfer desktop printers



Part Number	Part Description	Height		Length		Std. Pkg. Qty.	Std. Ctn. Qty.
		In.	mm	ft	M		
RHH4BL-S	Black, hybrid thermal transfer ribbon. Recommended for use with self-laminating, heat shrink, component and non-laminated labels.	4.33	109.98	1181.0	299.9	1	2
RHW4BL-S	Black, wax thermal transfer ribbon. Recommended for use with self-laminating and non-laminated labels.	4.33	109.98	1181.0	299.9	1	2
RHR4BL-S	Black, resin thermal transfer ribbon. Recommended for use with component labels and continuous tape.	4.33	109.98	1181.0	299.9	1	2

Order number of rolls required.

Ribbons are available for other thermal transfer desktop printers, add "-Z" in place of "-S".  
-Z ribbons contain 984.0' of ribbon material.

A. System Overview

B1. Cable Ties

B2. Cable Accessories

B3. Stainless Steel

C1. Wiring Duct

C2. Surface Raceway

C3. Abrasion Protection

C4. Cable Management

D1. Terminals

D2. Power & Grounding Connectors

E1. Labeling System

E2. Labels

E3. Pre-Printed & Write-On Markers

E4. Lockout/Tagout & Safety Solutions

F. Index

A. System Overview

B1. Cable Ties

B2. Cable Accessories

B3. Stainless Steel

C1. Wiring Duct

C2. Surface Raceway

C3. Abrasion Protection

C4. Cable Management

D1. Terminals

D2. Power & Grounding Connectors

E1. Labeling System

E2. Labels

E3. Pre-Printed & Write-On Markers

E4. Lockout/Tagout & Safety Solutions

F. Index

## Notes

### LABELING SOFTWARE

PANDUIT labeling software is custom designed to address your requirements for wire/cable labeling, component identification, network administration, as well as, safety and facility identification. From control panel wire identification, terminal block and facility pipe marking to patch panel, faceplate and wire/cable marking, PANDUIT software is the solution for your on-demand identification requirements.



**EASY-MARK™** Labeling Software is an easy-to-use, intuitive general purpose labeling software

**CAD-CONNECT™** Labeling Software generates labels quickly and easily directly from an electronic CAD file

**PAN-MARK® 2.5 for WINDOWS^** is a general purpose labeling software with advanced design features

**SAFETY EASE™** software allows you to create your own safety signs, tags, voltage and pipe markers on-demand

PANDUIT user-friendly software packages meet the unique requirements of your applications.

^WINDOWS is a registered trademark of Microsoft Corp. in the United States and other countries.

Bundle

Route/Protect

Terminate

Identify

A. System Overview

B1. Cable Ties

B2. Cable Accessories

B3. Stainless Steel

C1. Wiring Duct

C2. Surface Raceway

C3. Abrasion Protection

C4. Cable Management

D1. Terminals

D2. Power & Grounding Connectors

E1. Labeling System

E2. Labels

E3. Pre-Printed & Write-On Markers

E4. Lockout/Tagout & Safety Solutions

F. Index

A. System Overview

### EASY-MARK™ Labeling Software

- EASY-MARK™ Labeling Software simplifies label creation for the specific needs of your applications
- Instructions and user interface are available in English, French, German, Italian, Spanish, Korean, Japanese, Chinese and Portuguese
- Intuitive interview process allows automatic generation of compliant labels and signs
- Software selects and formats the optimum label for your specific project
- **WYSIWYG** (What You See Is What You Get) user interface, alpha/numeric serialization, data import, symbol import

- EASY-MARK™ Labeling Software is part of a complete line of innovative identification solutions from PANDUIT
- Supports most WINDOWS^ fonts drivers for standard thermal transfer, dot matrix, laser and ink jet, including PANDUIT thermal transfer printers

#### System Requirements:

- WINDOWS^ 98, 2000, NT4.x or XP; 64MB hard drive space and 40MB RAM



Part Number	Part Description	Std. Pkg. Qty.	Std. Ctn. Qty.
<b>PROG-EMCD3</b>	EASY-MARK™ Labeling Software, supplied on CD-ROM.	1	10

^WINDOWS and EXCEL are registered trademarks of Microsoft Corp. in the United States and/or other countries.

C2. Surface Raceway

### CAD-CONNECT™ Labeling Software

- Generates labels quickly and easily directly from an electronic CAD file
- Eliminates steps and time spent manually copying CAD identifiers into labeling software
- Program combines the power of an innovative wizard interview and EASY-MARK™ Labeling Software to capture and organize identifiers from electronic CAD files to automatically create and print labels
- Compatible with AutoCAD\* 2000i and Visio^ 2002 or newer versions of CAD

- Exports to alternative formats such as EXCEL (XLS) or Text (CSV) files for future use and documentation

#### System Requirements:

- WINDOWS^ 98, Me, 2000, NT4.x and XP; minimum 486 processor; minimum 32MB RAM; 64MB hard drive space



Part Number	Part Description	Std. Pkg. Qty.	Std. Ctn. Qty.
<b>PROG-CCCD</b>	CAD-CONNECT™ Labeling Software, including EASY-MARK™ Labeling Software, supplied on CD-ROM.	1	10

\*AutoCAD is a registered trademark of Autodesk, Inc.

^Visio and WINDOWS are registered trademarks of Microsoft Corp. in the United States and/or other countries.

E1. Labeling System

### PAN-MARK® 2.5 for WINDOWS^ Labeling Software

- Create bar codes
- Date, time and data input fields
- Reduce time and errors by using ODBC (Open Data-Base Connectivity) to import data EXCEL^ (.XLS), ACCESS^ (.MDB) and text files (.TXT) directly onto PAN-MARK® label formats
- Graphics file import allows you to insert bitmap (.BMP) graphic images onto a label
- Image library of over 100 standard images for electrical, safety and network system applications
- All PANDUIT thermal transfer, dot-matrix, laser and ink jet label formats including ULTIMATE ID® are preloaded and ready to use

- Supports most WINDOWS^ printer drivers for standard thermal transfer, dot matrix, laser and ink jet, including PANDUIT thermal transfer printers
- Advanced alpha and numeric serialization speeds label creation by creating incremented legend lists automatically
- Uses full range of WINDOWS^ fonts including True Type\* fonts

#### System Requirements:

- WINDOWS^ 95, 98, Me, 2000, NT 4.x, and XP; minimum 486 processor; minimum 8MB of RAM; 30 MB hard drive space



Part Number	Part Description	Std. Pkg. Qty.	Std. Ctn. Qty.
<b>PROG-WIN2CD</b>	PAN-MARK® 2.5 for WINDOWS^ labeling software supplied on CD-ROM.	1	10

^WINDOWS, EXCEL and ACCESS are registered trademarks of Microsoft Corp. in the United States and/or other countries.

\*True Type is a registered trademark of Apple Computing, Inc.

F. Index

### SAFETY EASE™ Safety Sign Software

- Create lockout, facility and electrical signs and tags
- Create cost-effective English and Spanish signs and tags on your laser or ink jet printer
- Select from over 2,000 pre-defined safety and facility legends or create your own custom legend
- Safety symbols and spell check included

#### System Requirements:

- WINDOWS^ 3.1, 95, 98, Me, 2000, NT4.x and XP; 386 processor; minimum 8 MB of RAM; 5 MB hard drive space

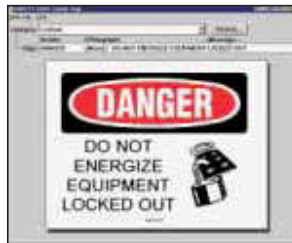


Part Number	Part Description	Std. Pkg. Qty.	Std. Ctn. Qty.
SEZ-SN	SAFETY EASE™ safety sign software supplied on two 3.5" diskettes.	1	5

^WINDOWS is a registered trademark of Microsoft Corp. in the United States and/or other countries.



Pop up edit screen allows the user to quickly edit text, change headers and add pictographs.



Convenient category and message pull down menus allow user to choose from over 2,000 legends.

### SAFETY EASE™ Marker and Tag Software

- Create electrical markers, pipe markers and tags
- Produce English, Spanish and bilingual electrical markers, tags and pipe markers with your own computer using PANDUIT thermal transfer printers and continuous vinyl tapes
- Select from over 500 defined ANSI, IIAR (Ammonia Refrigeration) and Medical Gas pipe marker legends or create your own custom legend in minutes

- Safety symbols, serialization and the ability to add additional information greatly enhance workplace safety, communication and training

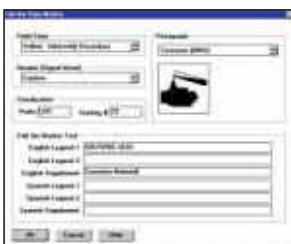
#### System Requirements:

- WINDOWS^ 3.1, 95, 98, Me, 2000, NT4.x and XP; 386 processor or higher; minimum 8 MB of RAM; 5 MB hard drive space



Part Number	Part Description	Std. Pkg. Qty.	Std. Ctn. Qty.
SEZ-PM	SAFETY EASE™ Safety Ease pipe marker and tag software supplied on CD ROM.	1	5

^WINDOWS is a registered trademark of Microsoft Corp. in the United States and/or other countries.



Convenient category pull down menu allows user to choose from over 10 categories such as chemical, electrical, IIAR, etc. or create up to 5 custom categories.



Pull down menu allows user to identify key components such as color, pictograph, header (if applicable) and legend.

A. System Overview

B1. Cable Ties

B2. Cable Accessories

B3. Stainless Steel

C1. Wiring Duct

C2. Surface Raceway

C3. Abrasion Protection

C4. Cable Management

D1. Terminals

D2. Power & Grounding Connectors

E1. Labeling System

E2. Labels

E3. Pre-Printed & Write-On Markers

E4. Lockout/Tagout & Safety Solutions

F. Index