

CABLE ACCESSORIES



PANDUIT provides comprehensive offering of cable accessories. These accessories are engineered to speed installation and lower installed costs for routing and managing cable. *PANDUIT* cable accessories are designed and manufactured to meet applicable quality standards including International, UL, Military, ISO and Aerospace.



Largest selection of mounts, clips and clamps for cable management

PANDUIT cable ties and accessories can be used in a variety of applications and environments, providing the optimal cable management solution

Installation methods include adhesive backed, user applied adhesive, screws, rivets or push barb



PANDUIT mounts, clips and clamps are manufactured in an environment committed to design innovation, high quality and knowledgeable service to our customers. Adhesive backed mounts provide a strong adhesive bond for long-term reliability. Cable clips offer a one-piece solution to save time and reduce inventory. Harness board accessories speed the routing and forming of cable bundles in the fabrication of a harness. They hold bundles at a uniform height above the board and are ideal for use with *PANDUIT* manual and automatic cable tie tooling.

Bundle

Route/Protect

Terminate

Identify

A. System Overview

B1. Cable Ties

B2. Cable Accessories

B3. Stainless Steel

C1. Wiring Duct

C2. Surface Raceway

C3. Abrasion Protection

C4. Cable Management

D1. Terminals

D2. Power & Grounding Connectors

E1. Labeling System

E2. Labels

E3. Pre-Printed & Write-On Markers

E4. Lockout/Tagout & Safety Solutions

F. Index

A. System Overview

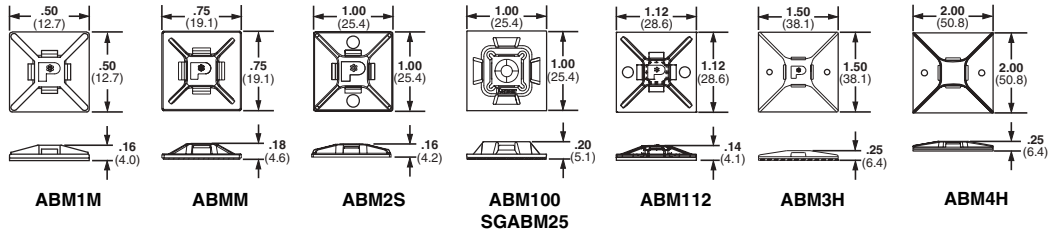
4-Way Adhesive Backed Cable Tie Mounts

- Allows cable tie entry from all four sides
- Available in multiple sizes to match application load requirements
- Produced 2-up or 4-up for fast and easy liner removal to speed installation

B1. Cable Ties

B2. Cable Accessories

B3. Stainless Steel



C1. Wiring Duct

C2. Surface Raceway

C3. Abrasion Protection

C4. Cable Management

D1. Terminals

D2. Power & Grounding Connectors

E1. Labeling System

E2. Labels

E3. Pre-Printed & Write-On Markers

E4. Lockout/Tagout & Safety Solutions

F. Index

Part Number	Used With Cable Ties†	Material	Color	Environment	Mounting Method*	Max. Static Load		Std. Pkg. Qty.	Std. Ctn. Qty.
						Lbs.	g		
4 Way Mounts with Adhesive									
ABM1M-A-C	M	Nylon 6.6	White	Indoors	Rubber	.13	59	100	500
ABM1M-AT-C	M	Nylon 6.6	White	Indoors/High Temp	Acrylic	.13	59	100	500
ABM1M-AT-M0	M	Weather Resistant Nylon 6.6	Black	Outdoors/High Temp	Acrylic	.13	59	1000	5000
ABMM-A-C	M, I	ABS	White	Indoors	Rubber	.30	136	100	500
ABMM-A-C20	M, I	ABS	Black	Indoors	Rubber	.30	136	100	500
ABMM-AT-C	M, I	ABS	White	Indoors/High Temp	Acrylic	.30	136	100	500
ABMM-AT-C0	M, I	Weather Resistant ABS	Black	Outdoors/High Temp	Acrylic	.30	136	100	500
ABM2S-A-C	M, I, S	ABS	White	Indoors	Rubber	.50	227	100	500
ABM2S-AT-C	M, I, S	ABS	White	Indoors/High Temp	Acrylic	.50	227	100	500
ABM2S-AT-C0	M, I, S	Weather Resistant ABS	Black	Outdoors/High Temp	Acrylic	.50	227	100	500
ABM100-A-C	M, I, S	Nylon 6.6	White	Indoors	Rubber	.50	227	100	1000
ABM100-A-D20	M, I, S,	Nylon 6.6	Black	Indoors/High Temp	Rubber	.50	227	500	1000
ABM100-AT-C	M, I, S	Nylon 6.6	White	Indoors/High Temp	Acrylic	.50	227	100	1000
ABM100-AT-C0	M, I, S	Weather Resistant Nylon 6.6	Black	Outdoors/High Temp	Acrylic	.50	227	100	1000
SGABM25-A-C	M, I, S, SGS	Nylon 6.6	White	Indoors	Rubber	.50	227	100	1000
SGABM25-AT-C0	M, I, S, SGS	Weather Resistant Nylon 6.6	Black	Outdoors/ High Temp	Acrylic	.50	227	100	1000
ABM112-A-C	M, I, S	Nylon 6.6	White	Indoors	Rubber	.63	286	100	500
ABM112-A-D20	M, I, S	Nylon 6.6	Black	Indoors	Rubber	.63	286	500	500
ABM112-AT-C	M, I, S	Nylon 6.6	White	Indoors/High Temp	Acrylic	.63	286	100	1000
ABM112-AT-C0	M, I, S	Weather Resistant Nylon 6.6	Black	Outdoors/High Temp	Acrylic	.63	286	100	1000
ABM3H-A-L	M, I, S, HS, LH, H, & HLM	Nylon 6.6	White	Indoors	Rubber	1.13	513	50	500
ABM3H-A-L20	M, I, S, HS, LH, H, & HLM	Nylon 6.6	Black	Indoors	Rubber	1.13	513	50	500
ABM3H-AT-L	M, I, S, HS, LH, H, & HLM	Nylon 6.6	White	Indoors/High Temp	Acrylic	1.12	513	50	500
ABM3H-AT-T0	M, I, S, HS, LH, H, & HLM	Weather Resistant Nylon 6.6	Black	Outdoors/High Temp	Acrylic	1.12	508	200	1000

†Cable Tie Cross Section Sizes: M = Miniature, I = Intermediate, S = Standard, HS = Heavy-Standard, LH = Light-Heavy, H = Heavy, HLM = Miniature *TAK-TY*® Hook & Loop Ties, HLS = Standard *TAK-TY*® Hook & Loop Ties and SGS = *SUPER-GRIP*™ Standard.

*For proper selection of adhesive see [page B2.45](#).

4-Way Adhesive Backed Cable Tie Mounts (continued)

Part Number	Used With Cable Ties‡	Material	Color	Environment	Mounting Method*	Max. Static Load		Std. Pkg. Qty.	Std. Ctn. Qty.
						Lbs.	g		
ABM4H-A-L	M, I, S, HS, LH, H, & HLM	Nylon 6.6	White	Indoors	Rubber	2.00	907	50	500
ABM4H-AT-T0	M, I, S, HS, LH, H, & HLM	Weather Resistant Nylon 6.6	Black	Outdoors/High Temp	Acrylic	2.00	907	200	1000
4-Way Mounts without Adhesive									
ABMM-D	M, I	ABS	White	Indoors	User supplied adhesive	—	—	500	5000
ABM2S-S6-D	M, I, S	ABS	White	Indoors	User supplied adhesive and/or two #6 (M3) Screws	—	—	500	5000
ABM100-S6-C	M, I, S	Nylon 6.6	White	Indoors		—	—	100	1000
SGABM25-S6-C	M, I, S, SGS	Nylon 6.6	White	Indoors	User supplied adhesive and/or two #6 (M3) Screws	—	—	100	1000
ABM100-S6-C69	M, I, S	Flame Retardant Nylon 6.6	Natural	Indoors	User supplied adhesive and/or #6 (M3) screw	—	—	100	1000
ABM112-S6-C	M, I, S	Nylon 6.6	White	Indoors	User supplied adhesive and/or two #6 (M3) Screws	—	—	100	1000
ABM112-S6-D0	M, I, S	Weather Resistant Nylon 6.6	Black	Outdoors		—	—	500	5000
ABM112-S6-C69	M, I, S	Flame Retardant Nylon 6.6	Natural	Indoors		—	—	100	500
ABM3H-S6-T	M, I, S, HS, LH, H, & HLM	Nylon 6.6	White	Indoors	User supplied adhesive and/or two #6 (M3) Screws	—	—	200	2000
ABM4H-S6-T	M, I, S, HS, LH, H, & HLM	Nylon 6.6	White	Indoors		—	—	200	1000

‡Cable Tie Cross Section Sizes: M = Miniature, I = Intermediate, S = Standard, HS = Heavy-Standard, LH = Light-Heavy, H = Heavy, HLM = Miniature *TAK-TY*® Hook & Loop Ties, HLS = Standard *TAK-TY*® Hook & Loop Ties and SGS = *SUPER-GRIP*™ Standard.

*For proper selection of adhesive see [page B2.45](#).

A. System Overview

B1. Cable Ties

B2. Cable Accessories

B3. Stainless Steel

C1. Wiring Duct

C2. Surface Raceway

C3. Abrasion Protection

C4. Cable Management

D1. Terminals

D2. Power & Grounding Connectors

E1. Labeling System

E2. Labels

E3. Pre-Printed & Write-On Markers

E4. Lockout/Tagout & Safety Solutions

F. Index

A. System Overview

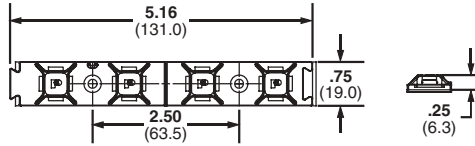
ABMQ Multiple Bridge Mount

B1. Cable Ties

- Multiple cable tie bridges on one mount speeds installation of cable bundles by reducing the number of mounts applied
- Dovetail connection system provides alignment and a joining method to expand routing capabilities
- V-groove allows for easy separation into two mounts with two bridges each for separate applications

- 4-way cable tie bridges allow cable bundles to be secured perpendicular to the mount for even spacing or inline to secure a bundle in multiple places
- Large adhesive surface area provides long-term reliability and keeps product in place despite heavy load or high stress

B2. Cable Accessories



B3. Stainless Steel

C1. Wiring Duct

Part Number	Used With Cable Ties‡	Material	Color	Environment	Mounting Method	Max. Static Load		Std. Pkg. Qty.	Std. Ctn. Qty.
						Lbs.	g		
ABMQ Mounts with Adhesive									
ABMQS-A-Q	M, I, S	ABS	White	Indoors	Rubber	1.85	838	25	250
ABMQS-A-Q20	M, I, S	ABS	Black	Indoors	Rubber			25	250
ABMQS-AT-Q	M, I, S	ABS	White	Indoors/High Temp	Acrylic			25	250
ABMQS-AT-Q0	M, I, S	Weather Resistant ABS	Black	Outdoors/High Temp	Acrylic			25	250
ABMQ Mounts without Adhesive									
ABMQS-S6-C0	M, I, S	Weather Resistant ABS	Black	Outdoors/High Temp	User Supplied Adhesive and/or two #6 M3 Screws	—	—	100	1000
ABMQS-S6-C	M, I, S	ABS	White	Indoors/High Temp		100	1000		

‡Cable Tie Cross Section Sizes: M = Miniature, I = Intermediate and S = Standard.

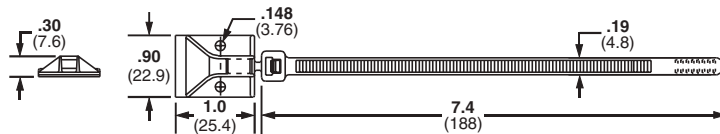
D1. Terminals

Combination Adhesive Mount/Cable Ties

D2. Power & Grounding Connectors

- Adhesive mount and cable tie molded as one piece helps reduce inventory costs
- Available with locking or releasable tie
- For indoor use only

E1. Labeling System



E2. Labels

Part Number	Tool	Material	Color	Adhesive Type	Max. Static Load		Std. Pkg. Qty.	Std. Ctn. Qty.
					Lbs.	g		
Locking Cable Tie								
PLA2S-A-Q	GTS, GTSL, GS2B, GS4H, PTS, PTH, PPTS, STS2, STH2	Nylon 6.6	White	Rubber	.45	204	25	250
Releasable Cable Tie								
PRA2S-A-Q	Hand Installed Only	Nylon 6.6	White	Rubber	.45	204	25	250

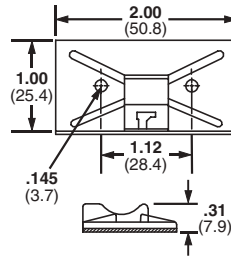
E3. Pre-Printed & Write-On Markers

E4. Lockout/Tagout & Safety Solutions

F. Index

Snap-In Cable Tie Mounts – Mechanically Applied

- For use with *PANDUIT* Standard cross section cable ties including PLT1S, PLT1.5S, PLT2S, PRT1.5S and PRT2S
- Integral retaining notch holds cable tie head in place below bundle
- Eliminates protruding tie head and facilitates one hand tie threading
- Quickly route wire and cable where mounting holes cannot be drilled
- For indoor use only

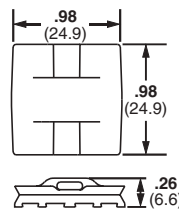


Part Number	Used With Cable Ties‡	Material	Color	Mounting Method	Max. Static Load		Std. Pkg. Qty.	Std. Ctn. Qty.
					Lbs.	g		
Adhesive Backed								
SMS-A-C	S	ABS	White	Rubber	1.00	454	100	500
SMS-A-C14			Gray	Rubber	1.00	454	100	500
SMS-A-C15			Ivory	Rubber	1.00	454	100	500
Screw Mount								
SMS-S6-D	S	ABS	White	User Supplied Adhesive and/or two #6 M3 Screws	—	—	500	5000

‡Cable Tie Cross Section Size: S = Standard.

Epoxy Applied Mounts

- Provides a fast, strong, economical method to secure wire/cable to most surfaces
- Eliminates the need to drill holes



Part Number	Used With Cable Ties‡	Material	Color	Environment	Mounting Method	Max. Static Load		Std. Pkg. Qty.	Std. Ctn. Qty.
						Lbs.	g		
EMS-A-C	M, I, S	Nylon 6.6	Natural	Indoors	EMA Epoxy	10.00	4540	100	1000
EMS-A-C0	M, I, S	Weather Resistant Nylon 6.6	Black	Outdoors					

‡Cable Tie Cross Section Sizes: M = Miniature, I = Intermediate and S = Standard.

A. System Overview

B1. Cable Ties

B2. Cable Accessories

B3. Stainless Steel

C1. Wiring Duct

C2. Surface Raceway

C3. Abrasion Protection

C4. Cable Management

D1. Terminals

D2. Power & Grounding Connectors

E1. Labeling System

E2. Labels

E3. Pre-Printed & Write-On Markers

E4. Lockout/Tagout & Safety Solutions

F. Index

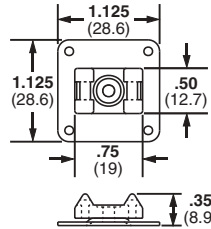
A. System Overview

Epoxy Applied Swivel Mount

- Mount swivels 360° to assure proper orientation with harness
- For indoor use only
- Four inspection holes to check adhesive coverage

B1. Cable Ties

B2. Cable Accessories



B3. Stainless Steel

C1. Wiring Duct

Part Number	Used With Cable Ties‡	Mounting Method	Max. Static Load		Std. Pkg. Qty.	Std. Ctn. Qty.
			Lbs.	g		
ASMS-A-X	M, I, S	EMA Epoxy	10.00	4540	10	100

‡Cable Tie Cross Section Sizes: M = Miniature, I = Intermediate and S = Standard.

C2. Surface Raceway

C3. Abrasion Protection

Epoxy Applied Cable Tie Mount Kits

- EMA Epoxy supplied in convenient two-compartment mixer cup with a mixer stick for each cup
- After full 24 hour cure time, bonding strength will exceed 50 lbs. on a clean, grease-free surface
- Each cup contains adhesive for three EMS or ASMS mounts
- Not recommended for use on polyethylene and polypropylene surfaces
- Epoxy hardens in approximately five minutes

C4. Cable Management



D1. Terminals

Part Number	Used With Cable Ties‡	Environment	Epoxy Cups	Mixer Sticks	EMS Mounts	Cable Ties	Std. Pkg. Qty.	Std. Ctn. Qty.
Epoxy Adhesive Only								
EMA-X	—	Indoors/Outdoors	10	10	—	—	10	—
Epoxy Mounting Kit with EMS Mounts								
EMSK3-1-X0	M, I, S	Indoors/Outdoors	1	1	3	—	10	—
Epoxy Mounting Kit with EMS Mounts and Cable Ties								
EMSK3-1-3-0	M, I, S	Indoors/Outdoors	1	1	3	3	1	10
EMSK12-4-12-X0	M, I, S	Indoors/Outdoors	4	4	12	12	10	10

‡Cable Tie Cross Section Sizes: M = Miniature, I = Intermediate and S = Standard.

D2. Power & Grounding Connectors

E1. Labeling System

E2. Labels

E3. Pre-Printed & Write-On Markers

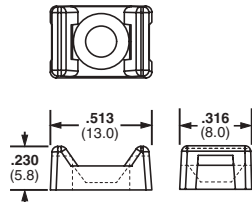
E4. Lockout/Tagout & Safety Solutions

F. Index

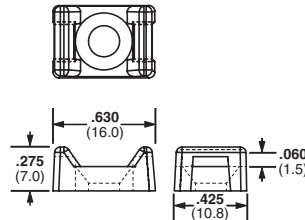
Cable Tie Mounts

- Unique cradle design provides maximum stability for the cable bundle

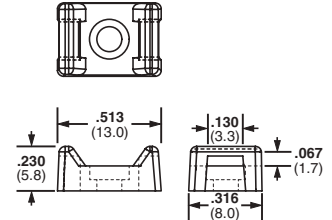
- Low profile design keeps bundle close to mounting surface
- For indoor use only



TM1



TM2
SGTM2



TM3

Part Number	Used With Cable Ties‡	Counterbore Diameter		Material	Color	Mounting Method	Std. Pkg. Qty.	Std. Ctn. Qty.	
		In.	mm						
TM1S4-C	M	.23	5.7	Nylon 6.6	Natural	#4 (M2.5) Screw	100	500	
TM1S6-C		.28	7.0			#6 (M3) Screw	100	500	
TM2S6-C	M, I, S	.29	7.1			#6 (M3) Screw	100	500	
TM2S8-C		.33	8.4			#8 (M4) Screw	100	500	
TM2R6-C		Countersunk	Countersunk			3/16" Rivet	100	500	
SGTM2S8-C	M, I, S, HS, SGS	.33	8.4			#8 (M4) Screw	100	500	
TM3S8-C	M, I, S, LH	.32	8.1			#8 (M4) Screw	100	500	
TM3S10-C		.38	9.7			#10 (M5) Screw	100	500	
TM3S25-C		.50	12.7			1/4 (M6) Screw	100	500	
TM3R6-C		Countersunk	Countersunk				3/16" Rivet	100	500

‡Cable Tie Cross Section Sizes: M = Miniature, I = Intermediate, S = Standard, HS = Heavy-Standard, LH = Light-Heavy and SGS = SUPER-GRIP™ Standard.

**Additional tie mounts available in specified materials.
All are available as standard PANDUIT parts.**

Heat Stabilized Nylon	Flame Retardant Nylon	Weather Resistant Nylon	Weather Resistant Polypropylene	TEFZEL [®]
TM1S4-M30	TM1S4-M69	TM1S6-M0	TM2S8-C100	TM2S8-C76
TM1S6-M30	TM1S6-M69	TM2R6-M0	TM3S8-C100	TM3S8-C76
TM2R6-M30	TM2S6-M69	TM2S6-M0	TM3S8-M100	TM3S10-C76
TM2S6-M30	TM2S8-M69	TM2S8-M0		
TM2S8-M30	TM3S8-C69	TM3R6-M0		
TM3S8-M30	TM3S10-M69	TM3S10-M0		
TM3S10-M30		TM3S25-M0		
TM3S25-M30				

[®]TEFZEL is a registered trademark of E. I. DuPont de Nemours Co.

A. System Overview

B1. Cable Ties

B2. Cable Accessories

B3. Stainless Steel

C1. Wiring Duct

C2. Surface Raceway

C3. Abrasion Protection

C4. Cable Management

D1. Terminals

D2. Power & Grounding Connectors

E1. Labeling System

E2. Labels

E3. Pre-Printed & Write-On Markers

E4. Lockout/Tagout & Safety Solutions

F. Index

A. System Overview

TAK-TY® Hook & Loop Cable Tie Mounts

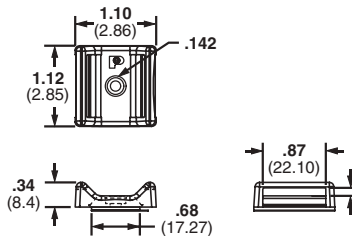
- For use with TAK-TY® Hook & Loop Cable Ties, see [page B1.64](#)
- For indoor use only
- Unique cradle design provides maximum stability for cable bundle

B1. Cable Ties



B2. Cable Accessories

B3. Stainless Steel



C1. Wiring Duct

C2. Surface Raceway

C3. Abrasion Protection

Part Number	Used With Cable Ties‡	Material	Color	Max. Static Load		Mounting Method	Std. Pkg. Qty.	Std. Ctn. Qty.
				Lbs.	g			
ABMT-A-C	HLM, HLS, HLT	Nylon 6.6	Natural	.38	174	Rubber Adhesive	100	1000
ABMT-A-C20			Black				100	1000
ABMT-S6-C			Natural	—	—	#6 (M3) Screw	100	1000
ABMT-S6-C20			Black				100	1000
ABMT-S6-C60		Black	100				1000	
ABMT-S6-C69		Glass-Filled Flame Retardant Nylon 6.6	Natural	100	1000			

‡Cable tie cross section sizes: HLM = Miniature TAK-TY® Hook & Loop Ties, HLS = Standard TAK-TY® Hook & Loop Ties and HLT = TAK-TY® Hook & Loop Ties.

C4. Cable Management

D1. Terminals

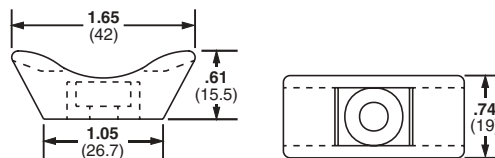
Extra-Heavy Cable Tie Mounts

- Unique cradle design provides maximum stability for cable bundle
- Routes and supports large diameter and heavy cable bundles

D2. Power & Grounding Connectors



E1. Labeling System



E2. Labels

E3. Pre-Printed & Write-On Markers

Part Number	Used With Cable Ties‡	Material	Color	Environment	Mounting Method	Std. Pkg. Qty.	Std. Ctn. Qty.
TMEH-S8-Q0	M, I, S, HS, H, LH, EH, HLM, HLT	Weather Resistant Nylon 6.6	Black	Outdoors	#8 (M4) Screw	25	250
TMEH-S10-Q0					#10 (M5) Screw	25	250
TMEH-S10-C100	M, I, S, HS, H, LH, EH, HLM, HLT	Polypropylene	Green	Indoors	#10 (M5) Screw	100	500
TMEH-S10-C109					#10 (M5) Screw	100	500
TMEH-S25-Q0	M, I, S, HS, H, LH, EH, HLM, HLT	Weather Resistant Nylon 6.6	Black	Outdoors	1/4 (M6) Screw	25	250

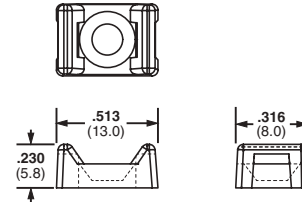
‡Cable Tie Cross Section Sizes: M = Miniature, I = Intermediate, S = Standard, HS = Heavy Standard, LH = Light-Heavy, H = Heavy, EH = Extra-Heavy and HLM = Miniature TAK-TY® Hook & Loop Ties and HLT = TAK-TY® Hook & Loop Ties.

E4. Lockout/Tagout & Safety Solutions

F. Index

Tie Mounts – User Supplied Adhesive Mounts

- Solid flat bottom surface provides maximum holding area
- For indoor use only

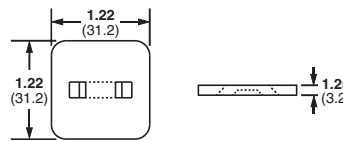


Part Number	Used With Cable Ties‡	Material	Color	Mounting Method	Std. Pkg. Qty.	Std. Ctn. Qty.
TM1A-C	M	Nylon 6.6	Natural	User Supplied Adhesive	100	1000
TM2A-C	M, I, S				100	500
TM3A-C	M, I, S, HS, LH				100	500

‡Cable Tie Cross Section Sizes: M = Miniature, I = Intermediate, S = Standard, HS = Heavy Standard and LH = Light-Heavy.

Low Profile Tie Mounts – User Supplied Adhesive Mounts

- Low profile design keeps bundle close to mounting surface
- For indoor use only

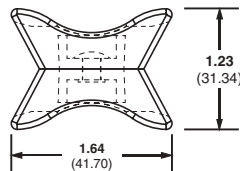


Part Number	Used With Cable Ties‡	Material	Color	Mounting Method	Std. Pkg. Qty.	Std. Ctn. Qty.
AM2-C	M, I, S	Nylon 6.6	Natural	User Supplied Adhesive	100	500

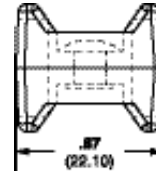
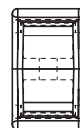
‡Cable Tie Cross Section Sizes: M = Miniature, I = Intermediate and S = Standard.

Swivel Mounts

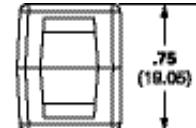
- The two mounts are securely fastened together with a connecting rivet that allows both mounts to rotate
- Can join bundles of cable, tubing or hoses that may need to move or are not parallel
- Mount separates bundles to avoid abrasion



TMEH



TM3



Part Number	Used With Cable Ties‡	Pull Apart Force	Material	Color	Environment	Std. Pkg. Qty.	Std. Ctn. Qty.
TM3-X2-C0	M, I, S, HS, LH	120	Weather Resistant Nylon 6.6	Black	Indoors/Outdoors	100	1000
TMEH-X2-L0	M, I, S, H, HS, LH, EH, HLM, HLT	250				50	500

‡Cable Tie Cross Section Sizes: M = Miniature, I = Intermediate, S = Standard, HS = Heavy Standard, LH = Light-Heavy, H = Heavy, EH = Extra-Heavy and HLM = TAK-TY® Hook & Loop Ties and HLT = TAK-TY® Hook & Loop Ties.

A. System Overview

B1. Cable Ties

B2. Cable Accessories

B3. Stainless Steel

C1. Wiring Duct

C2. Surface Raceway

C3. Abrasion Protection

C4. Cable Management

D1. Terminals

D2. Power & Grounding Connectors

E1. Labeling System

E2. Labels

E3. Pre-Printed & Write-On Markers

E4. Lockout/Tagout & Safety Solutions

F. Index

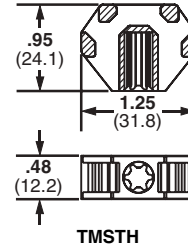
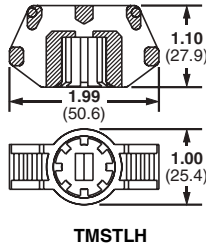
A. System Overview

Stud Tie Mounts

B1. Cable Ties

- Easily applied to bolts or studs with a light hammer blow or turning of the mount
- Designed for use with cable ties to route and secure cable bundles, air, water and hydraulic lines

B2. Cable Accessories



B3. Stainless Steel

C1. Wiring Duct

Part Number	Used With Cable Ties‡	Material	Color	Environment	Mounting Method	Std. Pkg. Qty.	Std. Ctn. Qty.
TMSTLHS6-M0	M, I, S, HS, LH	Impact Modified Weather Resistant Nylon 6.6	Black	Outdoors	1/4" Stud Dia. (6mm)	1000	5000
TMSTLHS8-M0	M, I, S, HS, LH				5/16" Stud Dia. (8mm)	1000	5000
TMSTHS10-D0	M, I, S, HS, LH, H				3/8" Stud Dia. (10mm)	500	0
TMSTHS13-D0	M, I, S, HS, LH, H				1/2" Stud Dia. (13mm)	500	0
TMSTHS16-D0	M, I, S, HS, LH, H				5/8" Stud Dia. (16mm)	500	0
TMSTHS19-D0	M, I, S, HS, LH, H				3/4" Stud Dia. (19mm)	500	0

C2. Surface Raceway

C3. Abrasion Protection

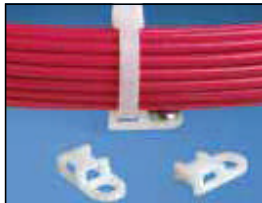
‡Cable Tie Cross Section Sizes: M = Miniature, I = Intermediate, S = Standard, HS = Heavy Standard, LH = Light-Heavy and H = Heavy.

C4. Cable Management

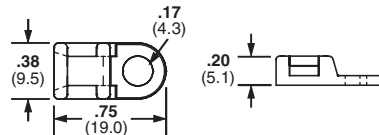
Tie Anchor Mounts – Screw Applied

- 4-way cable tie entry makes part orientation fast and easy
- Small overall size allows for use where space is limited

D1. Terminals



D2. Power & Grounding Connectors



E1. Labeling System

Part Number	Used With Cable Ties‡	Material	Color	Environment	Mounting Method	Std. Pkg. Qty.	Std. Ctn. Qty.
TA1S8-C	M, I, S	Nylon 6.6	Natural	Indoors	#8 (M4) Screw	100	500
TA1S8-M0		Weather Resistant Nylon 6.6	Black	Outdoors	#8 (M4) Screw	1000	5000
TA1S8-M30		Heat Stabilized Nylon 6.6	Black	Indoors	#8 (M4) Screw	1000	5000
TA1S8-M69		Flame Retardant Nylon 6.6	Natural	Indoors	#8 (M4) Screw	1000	5000
TA1S10-C		Nylon 6.6	Natural	Indoors	#10 (M5) Screw	100	500
TA1S10-M0		Weather Resistant Nylon 6.6	Black	Outdoors	#10 (M5) Screw	1000	5000
SGTA1S8-C	M, I, S, SGS	Nylon 6.6	White	Indoors	#8 (M4) Screw	100	500

E2. Labels

E3. Pre-Printed & Write-On Markers

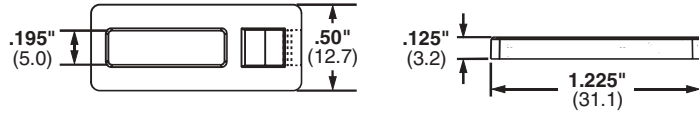
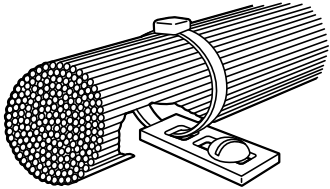
E4. Lockout/Tagout & Safety Solutions

F. Index

‡Cable Tie Cross Section Sizes: M = Miniature, I = Intermediate, S = Standard and SGS = SUPER-GRIP™ Standard.

Tie Anchor Mounts – TA2

- 4-way cable tie entry makes part orientation fast and easy
- Small overall size allows for use where space is limited

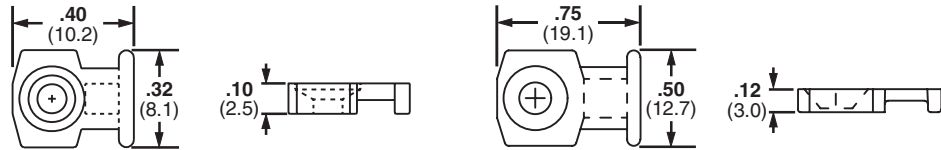


Part Number	Used With Cable Ties	Material	Color	Environment	Mounting Method	Std. Pkg. Qty.	Std. Ctn. Qty.
TA2-C	M, I, S	Nylon 6.6	Natural	Indoors	#10 (M5) Screw	100	1000
TA2-M						1000	5000

‡Cable Tie Cross Section Sizes: M = Miniature, I = Intermediate, S = Standard and SGS = SUPER-GRIP™ Standard.

Low Profile Mounts – Screw Applied

- Low profile design keeps bundle close to mounting surface
- Small overall size
- Install with a screw or rivet for a strong, secure installation
- For indoor use only



LPMM

LPMS

Part Number	Used With Cable Ties‡	Material	Color	Mounting Method	Std. Pkg. Qty.	Std. Ctn. Qty.
LPMM-S2-C	M	Nylon 6.6	Natural	#2 (M2) Countersunk Screw	100	1000
LPMM-S5-C	M			#5 (M3) Countersunk Screw	100	1000
LPMS-S8-C	M, I, S			#8 (M4) Countersunk Screw	100	1000

‡Cable Tie Cross Section Sizes: M = Miniature, I = Intermediate and S = Standard.

A. System Overview

B1. Cable Ties

B2. Cable Accessories

B3. Stainless Steel

C1. Wiring Duct

C2. Surface Raceway

C3. Abrasion Protection

C4. Cable Management

D1. Terminals

D2. Power & Grounding Connectors

E1. Labeling System

E2. Labels

E3. Pre-Printed & Write-On Markers

E4. Lockout/Tagout & Safety Solutions

F. Index

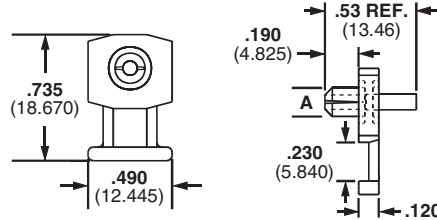
A. System Overview

Low Profile Mounts – Push Rivet Applied

B1. Cable Ties

- Eliminates screws
- Secures wires to any pre-drilled panel
- Can be installed in any panel thickness
- Low profile design keeps bundle close to mounting surface
- For indoor use only

B2. Cable Accessories



B3. Stainless Steel

C1. Wiring Duct

Part Number	Used With Cable Ties‡	Hole Diameter A	Material	Color	Mounting Method	Std. Pkg. Qty.	Std. Ctn. Qty.
KIMS-H366-C2	M, I, S	.144	Nylon 6.6	Red	Integral Push Rivet	100	1000
KIMS-H430-C6		.169		Blue	Integral Push Rivet	100	1000
KIMS-H500-C4		.196		Yellow	Integral Push Rivet	100	1000

C2. Surface Raceway

‡Cable Tie Cross Section Sizes: M = Miniature, I = Intermediate and S = Standard.

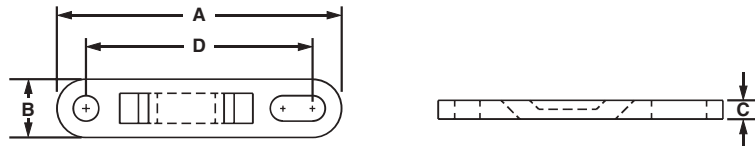
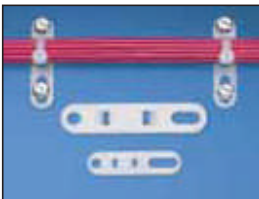
C3. Abrasion Protection

Cable Tie Plates

C4. Cable Management

- Slotted mounting hole accommodates various fastener spacing
- Low profile design keeps bundle close to mounting surface
- For indoor use only

D1. Terminals



D2. Power & Grounding Connectors

E1. Labeling System

Part Number	Used With Cable Ties‡	Length A		Width B		Height C		Hole Spacing D		Material	Color	Mounting Method	Std. Pkg. Qty.	Std. Ctn. Qty.
		In.	mm	In.	mm	In.	mm	In.	mm					
TP2-C	M, I, S	1.98	50.3	.50	12.7	.13	3.2	1.60	40.6	Nylon 6.6	Natural	#10 (M5) Screw	100	1000
TP4H-C	M, I, S, HS, LH, H	3.08	78.2	.62	15.7	.20	5.2	2.50	63.5	Nylon 6.6	Natural	1/4 (M6) Screw	100	1000

E2. Labels

‡Cable Tie Cross Section Sizes: M = Miniature, I = Intermediate, S = Standard, HS = Heavy Standard, LH = Light-Heavy and H = Heavy.

E3. Pre-Printed & Write-On Markers

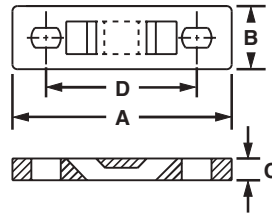
E4. Lockout/Tagout & Safety Solutions

F. Index

Multiple Tie Plates

- Used to secure closely spaced wire bundles
- Low profile design keeps bundle close to mounting surface

- For indoor use only
- Material: Nylon 6.6



Part Number	No. of Bundles	Used With Cable Ties†	Length A		Width B		Height C		Hole Spacing D		Mil. Std. Part Number	Mounting Method	Std. Pkg. Qty.	Std. Ctn. Qty.
			In.	mm	In.	mm	In.	mm	In.	mm				
MTP1S-E6-C	1	M, I, S	1.75	44.5	.50	12.7	.13	3.2	1.26	31.8	MS3339-1-9	#6 (M3) Screw	100	1000
MTP1S-E10-C			1.75	44.5	.50	12.7	.13	3.2	1.25	31.8	—	#10 (M5) Screw	100	1000
MTP1H-E6-C		M, I, S, HS, LH, H	2.09	53.1	.63	16.0	.20	5.2	1.5	38.1	MS3339-6-9	#6 (M3) Screw	100	1000
MTP1H-E10-C			2.09	53.1	.63	16.0	.20	5.2	1.5	38.1	—	#10 (M5) Screw	100	1000
MTP2S-E6-C	2	M, I, S	3.00	76.2	.50	12.7	.13	3.2	2.50	63.5	MS3339-2-9	#6 (M3) Screw	100	1000
MTP2S-E10-C			3.00	76.2	.50	12.7	.13	3.2	2.50	63.5	—	#10 (M5) Screw	100	1000
MTP2H-E6-C		M, I, S, HS, LH, H	3.59	91.2	.63	16.0	.20	5.2	3.0	76.2	MS3339-7-9	#6 (M3) Screw	100	1000
MTP2H-E10-C			3.59	91.2	.63	16.0	.20	5.2	3.0	76.2	—	#10 (M5) Screw	100	1000
MTP3S-E6-C	3	M, I, S	4.25	108.0	.50	12.7	.13	3.2	3.75	95.3	MS3339-3-9	#6 (M3) Screw	100	1000
MTP3S-E10-C			4.25	108.0	.50	12.7	.13	3.2	3.75	95.3	—	#10 (M5) Screw	100	1000
MTP3H-E6-C		M, I, S, HS, LH, H	5.09	129.3	.63	16.0	.20	5.2	4.50	114.3	MS3339-8-9	#6 (M3) Screw	100	1000
MTP3H-E10-C			5.09	129.3	.63	16.0	.20	5.2	4.50	114.3	—	#10 (M5) Screw	100	1000
MTP4S-E6-C	4	M, I, S	5.50	139.7	.50	12.7	.13	3.2	5.00	127.0	MS3339-4-9	#6 (M3) Screw	100	1000
MTP4S-E10-C			5.50	139.7	.50	12.7	.13	3.2	5.00	127.0	—	#10 (M5) Screw	100	1000
MTP4H-E6-C		M, I, S, HS, LH, H	6.59	167.4	.63	15.7	.20	5.2	6.00	152.4	MS3339-9-9	#6 (M3) Screw	100	1000
MTP4H-E10-C			6.59	167.4	.63	15.7	.20	5.2	6.00	152.4	—	#10 (M5) Screw	100	1000
MTP5S-E6-C	5	M, I, S	6.75	171.5	.50	12.7	.13	3.2	6.25	158.8	MS3339-5-9	#6 (M3) Screw	100	1000
MTP5S-E10-C			6.75	171.5	.50	12.7	.13	3.2	6.25	158.8	—	#10 (M5) Screw	100	1000
MTP5H-E6-C		M, I, S, HS, LH, H	8.09	205.5	.63	16.0	.20	5.2	7.50	190.5	MS3339-10-9	#6 (M3) Screw	100	1000
MTP5H-E10-C			8.09	205.5	.63	16.0	.20	5.2	7.50	190.5	—	#10 (M5) Screw	100	1000
MTP6H-E6-C	6	M, I, S, HS, LH, H	9.59	243.6	.63	16.0	.20	5.2	9.00	228.6	MS3339-11-9	#6 (M3) Screw	100	1000
MTP6H-E10-C			9.59	243.6	.63	16.0	.20	5.2	9.00	228.6	—	#10 (M5) Screw	100	1000

†Cable Tie Cross Section Sizes: M = Miniature, I = Intermediate, S = Standard, HS = Heavy Standard, LH = Light-Heavy and H = Heavy.

- A. System Overview
- B1. Cable Ties
- B2. Cable Accessories
- B3. Stainless Steel
- C1. Wiring Duct
- C2. Surface Raceway
- C3. Abrasion Protection
- C4. Cable Management
- D1. Terminals
- D2. Power & Grounding Connectors
- E1. Labeling System
- E2. Labels
- E3. Pre-Printed & Write-On Markers
- E4. Lockout/Tagout & Safety Solutions
- F. Index

A. System Overview

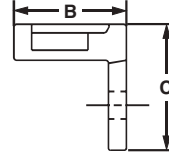
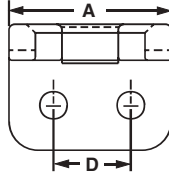
Right Angle Mounts

B1. Cable Ties

- Holds cable bundles away from the sharp edges of bulkheads or cabinet holes

- Can also be used to mount cable bundles adjacent to any surface
- For indoor use only

B2. Cable Accessories



B3. Stainless Steel

C1. Wiring Duct

C2. Surface Raceway

C3. Abrasion Protection

Part Number	Used With Cable Ties‡	Length A		Width B		Height C		Hole Spacing D		Material	Color	Mil. Std. Part Number	Mounting Method	Std. Pkg. Qty.	Std. Ctn. Qty.
		In.	mm	In.	mm	In.	mm	In.	mm						
RAMS-S3-M	M, I, S	.56	14.2	.39	9.9	.44	11.0	.28	7.1	Nylon 6.6	Natural	MS3341-2-9	#3 (M2.5) Screw or 3/32 (2.4) Rivet	1000	5000
RAMH-S6-D	M, I, S, HS, LH, H	1.00	25.4	.75	19.1	1.00	25.4	.28	7.1			MS3341-1-9	#6 (M3) Screw or 1/8 (3.2) Rivet	500	5000
RAMH-S10-D	M, I, S, HS, LH, H	1.00	25.4	.75	19.1	1.00	25.4	.50	12.7			—	#10 (M5) Screw or 3/16 (4.7) Rivet	500	5000

‡Cable Tie Cross Section Sizes: M = Miniature, I = Intermediate, S = Standard, HS = Heavy Standard, LH = Light-Heavy and H = Heavy, SGM = SUPER GRIP™ Miniature, SGI = SUPER GRIP™ Intermediate, SGS = SUPER GRIP™ Standard.

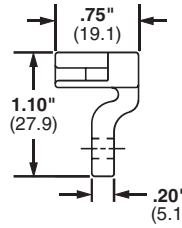
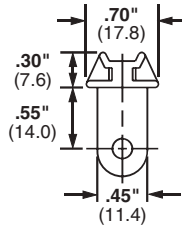
C4. Cable Management

D1. Terminals

Lightening Hole Mounts

- Secures cable bundles that run through bulkhead lightening holes
- Protects cable bundles from sharp edges
- For indoor use only

D2. Power & Grounding Connectors



E1. Labeling System

E2. Labels

Part Number	Used With Cable Ties‡	Material	Color	Mil. Std. Part Number	Mounting Method	Std. Pkg. Qty.	Std. Ctn. Qty.
LHMS-S5-D	M, I, S	Nylon 6.6	Natural	—	#5 (M3) Screw or 1/8 (3.2) Rivet	500	2500
LHMS-S6-D				MS3340-1-9	#6 (M3) Screw or 9/64 (3.5) Rivet	500	2500
LHMS-S10-D				—	#10 (M5) Screw or 3/16 (4.7) Rivet	500	2500

‡Cable Tie Cross Section Sizes: M = Miniature, I = Intermediate and S = Standard.

E3. Pre-Printed & Write-On Markers

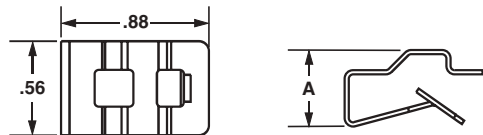
E4. Lockout/Tagout & Safety Solutions

F. Index

Metal Clip-On Mounts

- Clips on sheet metal edges for fast mounting of harness with cable ties
- Allows cable tie entry from all four sides for easy harness orientation

- For indoor use only

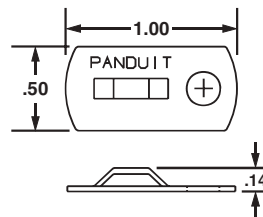


Part Number	Used With Cable Ties	Height A		Max. Panel Thickness		Material	Mounting Method	Std. Pkg. Qty.	Std. Ctn. Qty.
		In.	mm	In.	mm				
MCMS12-P-C	M, I, S	.31	8.0	.13	3.2	Zinc Plated Steel	Clip-On	100	500
MCMS25-P-C		.46	11.5	.24	6.1				
MCMS30-P-C		.55	14.0	.27	6.9				

‡Cable Tie Cross Section Sizes: M = Miniature, I = Intermediate and S = Standard.

Metal Screw-On Mount

- Screw applied aluminum mounting base for a secure support in demanding applications



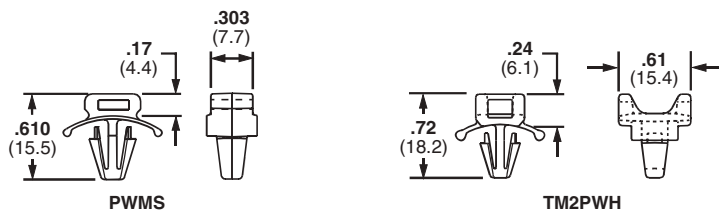
Part Number	Used With Cable Ties‡	Material	Environment	Mounting Method	Max. Static Load		Std. Pkg. Qty.	Std. Ctn. Qty.
					Lbs.	g		
MBMS-S10-C	M, I, S	Aluminum	Indoors/Outdoors	#10 (M5) Screw	10.00	4540	100	1000

‡Cable Tie Cross Section Sizes: M = Miniature, I = Intermediate and S = Standard.

Push Barb Cable Tie Mounts

- Wing provides added stability
- Requires no adhesive or additional mounting hardware

- Can be used where only one side of the panel is accessible



Part Number	Used With Cable Ties‡	Max. Panel Thickness		Panel Hole Diameter		Material	Color	Environment	Mounting Method	Std. Pkg. Qty.	Std. Ctn. Qty.
		In.	mm	In.	mm						
PWMS-H25-C	M, I, S	.105	2.7	.250	6.54	Nylon 6.6	Natural	Indoors	Push Barb	100	1000
PWMS-H25-M0		.105	2.7	.250	6.54	Weather Resistant Nylon 6.6	Black	Outdoors	Push Barb	1000	5000
TM2PWH25-C		.094	2.3	.250	6.4	Nylon 6.6	Natural	Indoors	Push Barb	100	500

‡Cable Tie Cross Section Sizes: M = Miniature, I = Intermediate and S = Standard.

A. System Overview

B1. Cable Ties

B2. Cable Accessories

B3. Stainless Steel

C1. Wiring Duct

C2. Surface Raceway

C3. Abrasion Protection

C4. Cable Management

D1. Terminals

D2. Power & Grounding Connectors

E1. Labeling System

E2. Labels

E3. Pre-Printed & Write-On Markers

E4. Lockout/Tagout & Safety Solutions

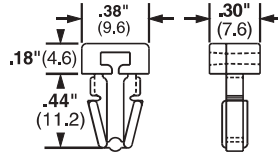
F. Index

A. System Overview

Push Mounts

- Push mounts require no adhesive or additional mounting hardware
- Can be used where only one side of the panel is accessible

B1. Cable Ties



B2. Cable Accessories

B3. Stainless Steel

Part Number	Used With Cable Ties‡	Max. Panel Thickness		Panel Hole Diameter		Material	Color	Environment	Mounting Method	Std. Pkg. Qty.	Std. Ctn. Qty.
		In.	mm	In.	mm						
PM2H25-C	M, I, S	.125	3.2	.250	6.4	Nylon 6.6	Natural	Indoors	Push Barb	100	500
PM2H25-M0		.125	3.2	.250	6.4	Weather Resistant Nylon 6.6	Black	Outdoors		1000	5000
PM2H25-M30		.125	3.2	.250	6.4	Heat Stabilized Nylon 6.6	Black	Indoors		1000	5000

‡Cable Tie Cross Section Sizes: M = Miniature, I = Intermediate and S = Standard.

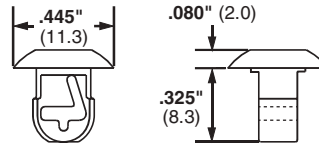
C2. Surface Raceway

C3. Abrasion Protection

Push Button Mount

- Push mounts require no adhesive or additional mounting hardware
- Designed for use where both sides of the panel are accessible

C4. Cable Management



D1. Terminals

D2. Power & Grounding Connectors

Part Number	Used With Cable Ties‡	Max. Panel Thickness		Panel Hole Diameter		Material	Color	Environment	Mounting Method	Std. Pkg. Qty.	Std. Ctn. Qty.
		In.	mm	In.	mm						
PBMS-H25-C	M, I, S	.125	3.2	.250	6.4	Nylon 6.6	Natural	Indoors	Push Barb	100	1000
PBMS-H25-C14		.125	3.2	.250	6.4	Nylon 6.6	Gray	Indoors		100	1000
PBMS-H25-M0		.125	3.2	.250	6.4	Weather Resistant Nylon 6.6	Black	Outdoors		1000	5000
PBMS-H25-M30		.125	3.2	.250	6.4	Heat Stabilized Nylon 6.6	Black	Indoors		1000	5000

‡Cable Tie Cross Section Sizes: M = Miniature, I = Intermediate and S = Standard.

E3. Pre-Printed & Write-On Markers

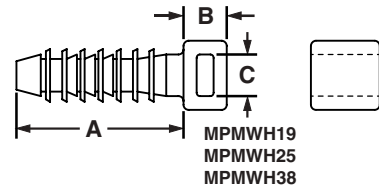
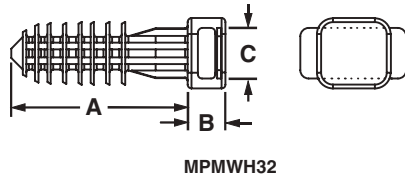
E4. Lockout/Tagout & Safety Solutions

F. Index

Masonry Push Mounts

• Used to secure wire, cable, or tubing to masonry surfaces

• Installed quickly into pre-drilled holes; design holds bundle securely



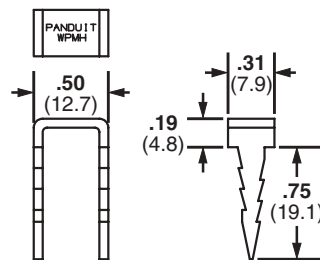
Part Number	Used With Cable Ties‡	Grip Length A		Height B		Hole Diameter C		Material	Color	Environment	Mounting Method	Std. Pkg. Qty.	Std. Ctn. Qty.
		In.	mm	In.	mm	In.	mm						
MPMS19-C0	M, I, S	.97	24.6	.25	6.4	.187	5.0	Impact Modified Weather Resistant Nylon 6.6	Black	Outdoors	Tree Barb	100	500
MPMS25-C0		.97	24.6	.27	6.9	.250	6.4						
MPMH38-L0	M, I, S, HS, LH, H & HLM	1.25	31.8	.30	7.5	.375	9.5					50	500
MPMWH32-L0	M, I, S, HS, LH, H & HLM	1.41	35.8	.28	7.1	.315	8.0					50	500

‡Cable Tie Cross Section Sizes: M = Miniature, I = Intermediate, S = Standard, HS = Heavy Standard, LH = Light-Heavy, H = Heavy and HLM = Miniature *TAK-TY*® Hook & Loop Ties.

Wood Push Mount

• Used to secure wire, cable, or tubing to wood surfaces

• Barbed design holds mount in place – rated for 60 lb. pullout



Part Number	Used With Cable Ties‡	Material	Environment	Mounting Method	Std. Pkg. Qty.	Std. Ctn. Qty.
WPMH-C	M, I, S, HS, LH, H & HLM	Plated Steel	Indoors/Outdoors	Hammer into Wood	100	—

‡Cable Tie Cross Section Sizes: M = Miniature, I = Intermediate, S = Standard, HS = Heavy Standard, LH = Light-Heavy, H = Heavy and HLM = Miniature *TAK-TY*® Hook & Loop Ties.

A. System Overview

B1. Cable Ties

B2. Cable Accessories

B3. Stainless Steel

C1. Wiring Duct

C2. Surface Raceway

C3. Abrasion Protection

C4. Cable Management

D1. Terminals

D2. Power & Grounding Connectors

E1. Labeling System

E2. Labels

E3. Pre-Printed & Write-On Markers

E4. Lockout/Tagout & Safety Solutions

F. Index

A. System Overview

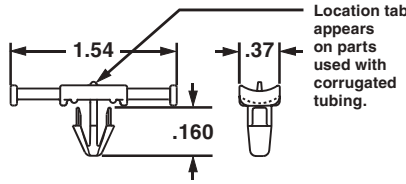
Cable Tie Harness Mounts

B1. Cable Ties

- Designed to be attached to the wire harness during assembly
- Cable ties can be installed by hand or with *PANDUIT* automatic cable tie tools
- Used with harness board standoff posts, see [page B2.44](#)

- Available with or without corrugated tubing location tab
- Natural Nylon material for indoor use
- Heat Stabilized Nylon material (30) for high temperature applications – indoor use

B2. Cable Accessories



B3. Stainless Steel

C1. Wiring Duct

Part Number	Used With Cable Ties‡	Max. Panel Thickness		Panel Hole Dia.		Material	Color	Mounting Method	Std. Pkg. Qty.	Std. Ctn. Qty.
		In.	mm	In.	mm					

C2. Surface Raceway

FOR CORRUGATED TUBING – A location tab on the mount shelf aligns with the corrugated tubing grooves to ensure proper mount location during assembly

THMSP20-C	M, I, S	.160	4.1	.244 – .283	6.2 – 7.2	Nylon 6.6	Natural	Push Barb	100	1000
THMSP20-C30	M, I, S	.160	4.1	.244 – .283	6.2 – 7.2	Heat Stabilized Nylon 6.6	Black	Push Barb	100	1000
THMSP25-C	M, I, S	.230	5.8	.244 – .283	6.2 – 7.2	Nylon 6.6	Natural	Push Barb	100	1000
THMSP25-C30	M, I, S	.230	5.8	.244 – .283	6.2 – 7.2	Heat Stabilized Nylon 6.6	Black	Push Barb	100	1000

C4. Cable Management

FOR DISCRETE WIRING – No location tab

THMSP20F-C	M, I, S	.160	4.1	.244 – .283	6.2 – 7.2	Nylon 6.6	Natural	Push Barb	100	1000
THMSP20F-C30	M, I, S	.160	4.1	.244 – .283	6.2 – 7.2	Heat Stabilized Nylon 6.6	Black	Push Barb	100	1000
THMSP25F-C	M, I, S	.230	5.8	.244 – .283	6.2 – 7.2	Nylon 6.6	Natural	Push Barb	100	1000
THMSP25F-C30	M, I, S	.230	5.8	.244 – .283	6.2 – 7.2	Heat Stabilized Nylon 6.6	Black	Push Barb	100	1000

D2. Power & Grounding Connectors

Cable tie cross sections: M = Miniature, I = Intermediate and S = Standard.

E1. Labeling System

E2. Labels

E3. Pre-Printed & Write-On Markers

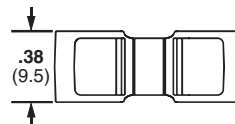
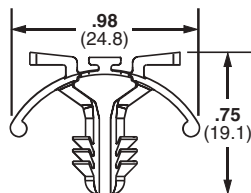
E4. Lockout/Tagout & Safety Solutions

F. Index

Tie Harness Mount for Single Cable Tie

- Secured with only one cable tie
- Cable ties can be installed by hand or with *PANDUIT* automatic cable tie tools
- Wing design provides added stability

- Natural Nylon material for indoor use
- Heat Stabilized material for high temperature applications – indoor use



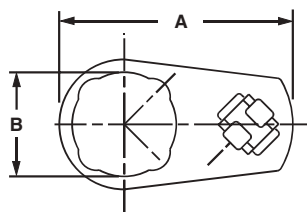
Part Number	Used With Cable Ties	Max. Panel Thickness		Panel Hole Diameter		Material	Color	Environment	Mounting Method	Std. Pkg. Qty.	Std. Ctn. Qty.
		In.	mm	In.	mm						
THM1SC-C	M, I, S	.135	3.4	.250	6.4	Nylon 6.6	Natural	Indoors	Tree Barb	100	1000
THM1SC-C30	M, I, S	.135	3.4	.250	6.4	Heat Stabilized Nylon 6.6	Black	Indoors/High Temp	Tree Barb	100	1000

Cable Tie Cross Section Sizes: M = Miniature, I = Intermediate and S = Standard.

Control Panel Mount

- Installed behind control panel switch
- Ideal for high strain areas where cable is routed from panel to panel door

- Compatible with most control panel switch designs



Part Number	Used With Cable Ties‡	Length A		Width B		Height C		Material	Mounting Method	Std. Pkg. Qty.	Std. Ctn. Qty.
		In.	mm	In.	mm	In.	mm				
CPM87S-C	M, I, S	2.01	51.1	.89	22.6	.17	4.3	Zinc Plated Steel	Control Panel Switch	100	1000
CPM122S-C	M, I, S	2.82	71.7	1.22	31.0	.17	4.3	Zinc Plated Steel	Control Panel Switch	100	1000

‡Cable Tie Cross Section Sizes: M = Miniature, I = Intermediate and S = Standard.

A. System Overview

B1. Cable Ties

B2. Cable Accessories

B3. Stainless Steel

C1. Wiring Duct

C2. Surface Raceway

C3. Abrasion Protection

C4. Cable Management

D1. Terminals

D2. Power & Grounding Connectors

E1. Labeling System

E2. Labels

E3. Pre-Printed & Write-On Markers

E4. Lockout/Tagout & Safety Solutions

F. Index

A. System Overview

PAN-POST™ Standoff

B1. Cable Ties

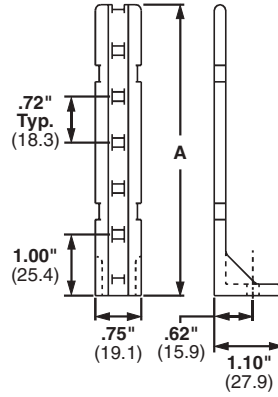
- Supports cable bundles above or away from surface
- For indoor use only

B2. Cable Accessories



B3. Stainless Steel

C1. Wiring Duct



C2. Surface Raceway

Part Number	Used With Cable Ties‡	Height A		Material	Color	Mounting Method	Std. Pkg. Qty.	Std. Ctn. Qty.
		In.	mm					
PP1S-S10-X	M, I, S	2.00	50.8	Nylon 6.6	Natural	#10 (M5) Screw	10	100
PP1S-S12-X	M, I, S	2.00	50.8	Nylon 6.6	Natural	#12 (M5.5) Screw	10	100
PP2S-S10-X	M, I, S	4.60	116.8	Nylon 6.6	Natural	#10 (M5) Screw	10	100
PP2S-S12-X	M, I, S	4.60	116.8	Nylon 6.6	Natural	#12 (M5.5) Screw	10	100

‡Cable Tie Cross Section Sizes: M = Miniature, I = Intermediate and S = Standard.

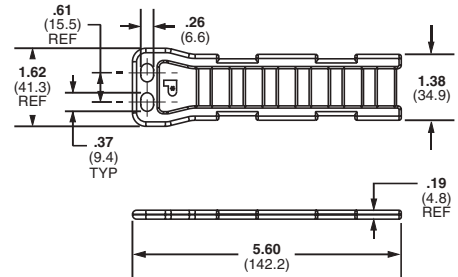
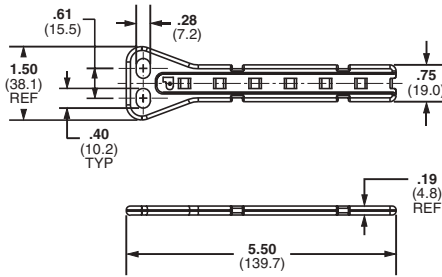
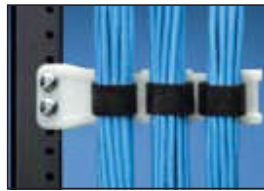
C4. Cable Management

D1. Terminals

Flat PAN-POST™ Standoffs

- Standard EIA hole spacing allows product to be mounted with user supplied screws up to 1/4" diameter
- Organize cables in standard cabinets and racks
- Mounting method: 1/4" (M6) Screw
- Use where space is limited
- For indoor use only

D2. Power & Grounding Connectors



E1. Labeling System

E2. Labels

E3. Pre-Printed & Write-On Markers

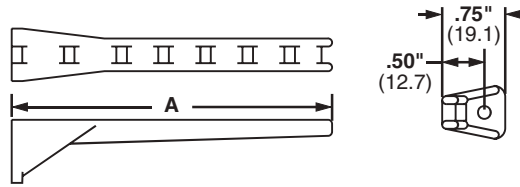
Part Number	Used With Cable Ties‡	Material	Color	Mounting Method	Std. Pkg. Qty.	Std. Ctn. Qty.
PPF2S-S25-V	M, I, S	Nylon 6.6	Natural	Two 1/4" (M6) Screws	5	100
PPF2S-S25-V69		Flame Retardant Nylon 6.6				
PPF2SV-S25-V	M, I, S, HS, LH, H, HLM, HLS, & HLT	Nylon 6.6				
PPF2SV-S25-V69		Flame Retardant Nylon 6.6				

F. Index

‡Cable Tie Cross Section Sizes: M = Miniature, I = Intermediate, S = Standard, HS = Heavy Standard, LH = Light-Heavy, H = Heavy, HLM = Miniature TAK-TY® Hook & Loop Ties, HLS = Standard TAK-TY® Hook & Loop Ties and HLT = TAK-TY® Hook & Loop Ties.

Right Angle Base

- Supports cable above the mounting surface

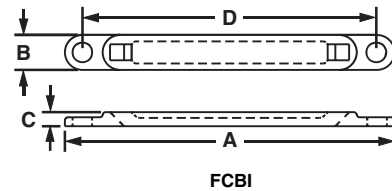
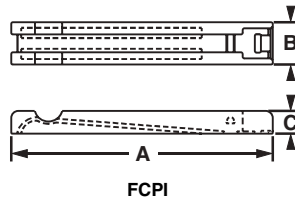


Part Number *	Used With Cable Ties	Max. Flat Cable Width		Length A		Material	Color	Environment	Mounting Method	Std. Pkg. Qty.	Std. Ctn. Qty.
		In.	mm	In.	mm						
RAFCB11-S6-C20	I	1.00	25.4	1.75	44.4	Nylon 6.6	Black	Indoors	#6 (M3) Screw	100	1000
RAFCB12-S6-C20	I	2.00	50.8	2.78	70.6						
RAFCB13-S6-C20	I	3.00	76.2	3.81	19.1						

*Cable Tie Cross Section Sizes: I = Intermediate.

Flat Cable Mounting System

- Secures stacked cables, folds, and breakouts, as well as laminated and molded bus bars
- Use one base, one corresponding size plate (FCPI), and one Intermediate cross section cable tie
- For indoor use only



Part Number	Max. Flat Cable Width		Length A		Width B		Height C		Hole Spacing D		Material	Color	Mounting Method	Std. Pkg. Qty.	Std. Ctn. Qty.
	In.	mm	In.	mm	In.	mm	In.	mm	In.	mm					
FCB11-A-C20	1.00	25.4	2.50	83.5	.38	9.5	.15	3.8	2.08	52.8	Nylon 6.6	Black	User supplied adhesive	100	1000
FCB12-A-C20	2.00	50.8	3.50	88.9	.38	9.5	.15	3.8	3.10	78.7			User supplied adhesive	100	1000
FCB13-A-C20	3.00	76.2	4.52	114.8	.38	9.5	.15	3.8	4.12	104.6			User supplied adhesive	100	1000
FCB11-S10-C20	1.00	25.4	2.50	83.5	.38	9.5	.15	3.8	2.08	52.8			#10 (M5) Screw	100	1000
FCB12-S10-C20	2.00	50.8	3.50	88.9	.38	9.5	.15	3.8	3.10	78.7			#10 (M5) Screw	100	1000
FCB13-S10-C20	3.00	76.2	4.52	114.8	.38	9.5	.15	3.8	4.12	104.6			#10 (M5) Screw	100	1000
FCPI1-C20*	1.00	25.4	1.29	32.8	.38	26.4	.20	5.1	—	—			Cable Ties	100	1000
FCPI2-C20*	2.00	50.8	2.31	58.7	.38	51.8	.20	5.1	—	—			Cable Ties	100	1000
FCPI3-C20*	3.00	76.2	3.32	84.3	.38	77.2	.20	5.1	—	—			Cable Ties	100	1000

*Recommend use with PLT21 Cable Ties.

A. System Overview

B1. Cable Ties

B2. Cable Accessories

B3. Stainless Steel

C1. Wiring Duct

C2. Surface Raceway

C3. Abrasion Protection

C4. Cable Management

D1. Terminals

D2. Power & Grounding Connectors

E1. Labeling System

E2. Labels

E3. Pre-Printed & Write-On Markers

E4. Lockout/Tagout & Safety Solutions

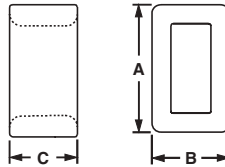
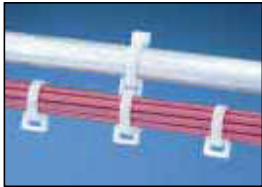
F. Index

A. System Overview

Closed Connector Rings

- Connects multiple cable bundles
- For indoor use only

B1. Cable Ties



B2. Cable Accessories

B3. Stainless Steel

Part Number	Used With Cable Ties‡	Length A		Width B		Height C		Material	Color	Mounting Method	Std. Pkg. Qty.	Std. Ctn. Qty.
		In.	mm	In.	mm	In.	mm					
CR2-M	M, I, S	.33	8.4	.20	5.1	.197	5.0	Nylon 6.6	Natural	Cable Ties	1000	10000
CR4H-M	M, I, S, HS, LH	.57	14.5	.30	7.6	.36	9.1					
CR4H-M0	M, I, S, HS, LH	.57	14.5	.30	7.6	.36	9.1					

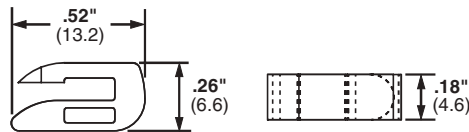
‡Cable Tie Cross Section Sizes: M = Miniature, I = Intermediate, S = Standard, HS = Heavy Standard and LH = Light-Heavy.

C2. Surface Raceway

Open Connector Ring

- Designed to add on cable bundles without removing cable ties

C3. Abrasion Protection



C4. Cable Management

Part Number	Used With Cable Ties‡	Material	Color	Environment	Mounting Method	Std. Pkg. Qty.	Std. Ctn. Qty.
CROS-M	M, I, S	Nylon 6.6	Natural	Indoors	Connects to M, I, S Cable Ties	1000	5000

‡Cable Tie Cross Section Sizes: M = Miniature, I = Intermediate and S = Standard.

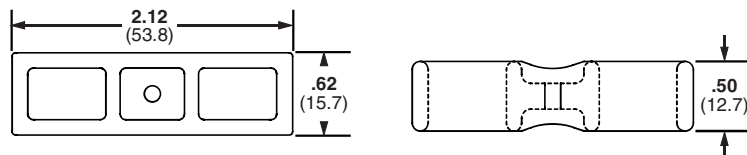
D2. Power & Grounding Connectors

E1. Labeling System

Cable Spacers

- Used to separate and/or hang cords, cables, and tubing

E2. Labels



E3. Pre-Printed & Write-On Markers

Part Number	Used With Cable Ties‡	Material	Color	Environment	Mounting Method	Std. Pkg. Qty.	Std. Ctn. Qty.
CSH-D20	M, I, S, HS, LH, H	Nylon 6.6	Black	Indoors	Cable Ties	500	2500
CSH-D0	M, I, S, HS, LH, H	Weather Resistant Nylon 6.6	Black	Indoors/Outdoors	Cable Ties	500	2500

‡Cable Tie Cross Section Sizes: M = Miniature, I = Intermediate, S = Standard, HS = Heavy Standard, LH = Light-Heavy and H = Heavy.

E4. Lockout/Tagout & Safety Solutions

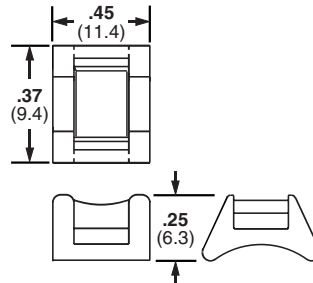
F. Index

Cable Spacer Cross

- Connects two bundles at 90°
- Separates bundles to prevent abrasion



- Dual cradle design stabilizes cable bundle

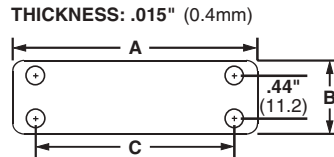


Part Number	Used With Cable Ties‡	Material	Color	Environment	Mounting Method	Std. Pkg. Qty.	Std. Ctn. Qty.
CSCS-M	M, I, S	Nylon 6.6	Natural	Indoors	Cable Ties	1000	10000

‡Cable Tie Cross Section Sizes: M = Miniature, I = Intermediate and S = Standard.

Marker Plates

- Install as flags, tags, or wrap-around identification plates to clearly identify all wire harnesses
- Use with nylon marking pens for an easy and economic alternative to identify wire harnesses
- Available in black or white to match the wire harness



Part Number	Used With Cable Ties‡	Length A		Width B		Hole Spacing C		Material	Color	Environment	Mounting Method	Std. Pkg. Qty.	Std. Ctn. Qty.
		In.	mm	In.	mm	In.	mm						
Loose Piece													
MP150-C	M, I, S	1.50	38.1	.75	19.0	1.03	26.2	Nylon 6.6	White	Indoors	Cable Ties	100	500
MP175-C	M, I, S	1.75	44.4	.75	19.0	1.28	32.5					100	500
MP200-C	M, I, S	2.00	50.8	.75	19.0	1.53	38.9					100	500
MP250-C	M, I, S	2.50	63.5	.75	19.0	2.03	51.6					100	500
MP350-C	M, I, S	3.50	88.9	.75	19.0	3.03	77.7					100	1000
MP250W175-C	M, I, S	2.50	63.5	1.75	44.5	2.03	51.6					100	1000
MP150-C0	M, I, S	1.50	38.1	.75	19.0	1.03	26.2	Weather Resistant Nylon 6.6	Black	Outdoors	Cable Ties	100	500
MP175-C0	M, I, S	1.75	44.4	.75	19.0	1.28	32.5					100	500
MP200-C0	M, I, S	2.00	50.8	.75	19.0	1.53	38.9					100	500
MP250-C0	M, I, S	2.50	63.5	.75	19.0	2.03	51.6					100	500
MP350-C0	M, I, S	3.50	88.9	.75	19.0	3.03	77.7					100	1000
MP250W175-C0	M, I, S	2.50	63.5	1.75	44.5	2.03	51.6					100	1000
Rolls													
MP150-R	M, I, S	1.50	38.1	.75	19.0	1.03	26.2	Nylon 6.6	White	Indoors	Cable Ties	1000	5000
MP175-R	M, I, S	1.75	44.4	.75	19.0	1.28	32.5					1000	5000
MP200-R	M, I, S	2.00	50.8	.75	19.0	1.54	38.9					1000	5000
MP250-R	M, I, S	2.50	63.5	.75	19.0	2.03	51.6					1000	5000

‡Cable Tie Cross Section Sizes: M = Miniature, I = Intermediate and S = Standard.

A. System Overview

B1. Cable Ties

B2. Cable Accessories

B3. Stainless Steel

C1. Wiring Duct

C2. Surface Raceway

C3. Abrasion Protection

C4. Cable Management

D1. Terminals

D2. Power & Grounding Connectors

E1. Labeling System

E2. Labels

E3. Pre-Printed & Write-On Markers

E4. Lockout/Tagout & Safety Solutions

F. Index

A. System Overview

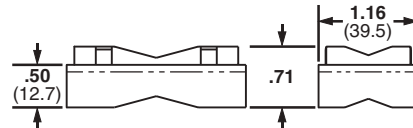
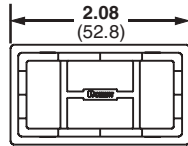
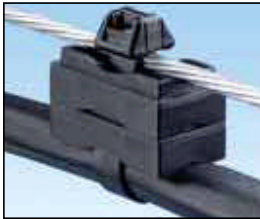
Stackable Aerial Cable Spacer

B1. Cable Ties

- Greater resistance to damage caused by ultraviolet light – indoor or outdoor use
- Each spacer snaps into another to increase spacer heights by 1/2" increments

- Designed for use in parallel or perpendicular applications
- For use with *DURA-TY™* Cable Ties shown on [page B1.50](#) or *PAN-STEEL®* Metal Locking Ties, see [pages B3.3, B3.4, B3.5](#)

B2. Cable Accessories



B3. Stainless Steel

C1. Wiring Duct

Part Number	Used with Cable Ties	Material	Color	Environment	Mounting Method	Std. Pkg. Qty.	Std. Ctn. Qty.
SACS50-T100	LH, H, EH	Weather Resistant Polypropylene	Black	Outdoors	Cable Ties	200	2000

Cable Tie Cross Sections: LH = Light-Heavy, H = Heavy, EH = Extra-Heavy.

C2. Surface Raceway

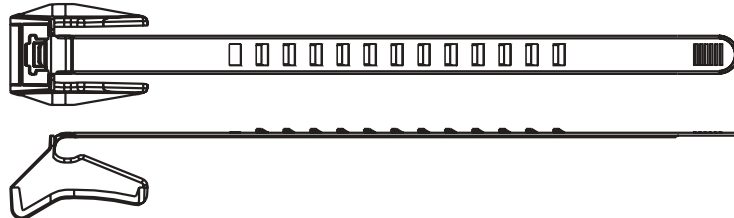
C3. Abrasion Protection

Aerial Support Tie – Weather Resistant Polypropylene

- Designed to attach coax or telephone cable to the 1/4" (6.4mm) or 5/16" (7.9mm) support strand to form the expansion loop and keep equipment and cables clear of pole hardware

- One-piece construction with integral 1/2" (12.7mm) spacer reduces inventory costs of separate spacer and bands, and installs faster to lower installed cost
- Releasable and reusable

C4. Cable Management



D1. Terminals

D2. Power & Grounding Connectors

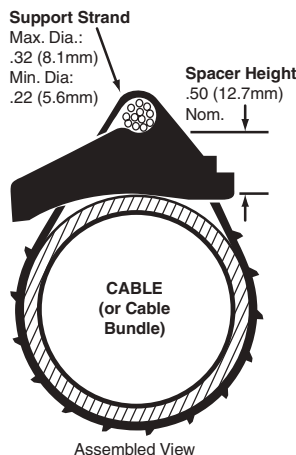
Part Number	Length		Width		Thickness		Max. Bundle Dia.		Min. Loop Tensile Str.		Recommended Installation Tool	Std. Pkg. Qty.	Std. Ctn. Qty.
	In.	mm	In.	mm	In.	mm	In.	mm	Lbs.	N			
AST10-5-C100	5.6	142	.448	11.4	.055	1.4	1.00	25	75	334	Hand Installed Only	100	1000
AST15-5-C100	6.9	175	.448	11.4	.055	1.4	1.50	38	75	334		100	1000
AST20-5-C100	8.4	214	.448	11.4	.055	1.4	2.00	51	75	334		100	1000
AST25-5-C100	10.0	254	.448	11.4	.070	1.8	2.50	64	75	334		100	1000

E2. Labels

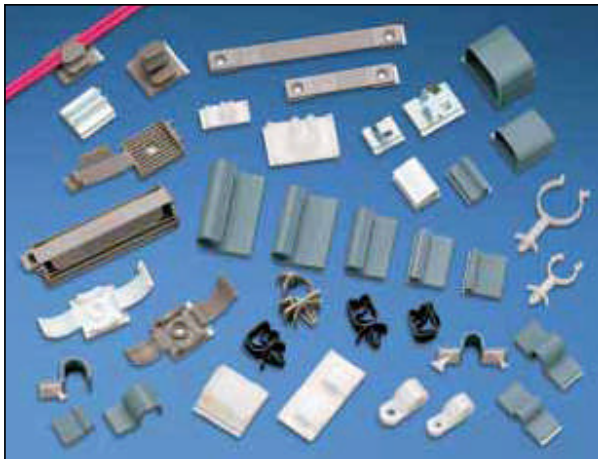
E3. Pre-Printed & Write-On Markers

E4. Lockout/Tagout & Safety Solutions

F. Index



Cable and Wire Mounting Devices (used without cable ties)



Wiring Accessories are an integral part of the *PANDUIT* comprehensive selection of wire management products.

These accessories are one piece solutions that help provide the lowest installed cost for controlling, mounting and protecting wire and cable. Mounting methods include:

- Adhesive-backed
- Screw applied
- Rivet applied
- Push mounts

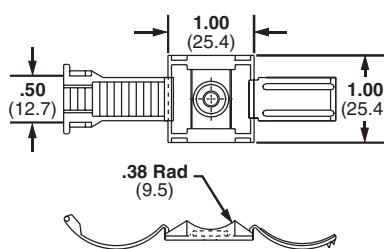
Adhesive Backed Mounting Devices

Faster Liner Removal Speeds Installation and Lowers Installed Cost

- The adhesive backed mounts are offered either as one or two mounts per liner
- The two-up mounts are easily removed by bending the mounts away from the liner
- The individual mounts have a convenient tear tab for quick removal

CLINCHER™ Adjustable Releasable Clamp

- Adjustable clamp designed to contain a range of cable bundle diameters
- Latch can be released to provide access to cable bundles
- For indoor use only
- Material: Polypropylene



Part Number	Bundle Diameter Range		Color	Mounting Method	Max. Static Load		Std. Pkg. Qty.	Std. Ctn. Qty.
	In.	mm			Lbs.	g		
ARC.68-A-Q	.19-.69	4.8-17.5	White	Rubber Adhesive	.50	227	25	250
ARC.68-A-Q14	.19-.69	4.8-17.5	Gray	Rubber Adhesive	.50	227	25	250
ARC.68-S6-Q	.19-.69	4.8-17.5	White	#6 (M3) Screw	—	—	25	250
ARC.68-S6-Q14	.19-.69	4.8-17.5	Gray	#6 (M3) Screw	—	—	25	250

A. System Overview

B1. Cable Ties

B2. Cable Accessories

B3. Stainless Steel

C1. Wiring Duct

C2. Surface Raceway

C3. Abrasion Protection

C4. Cable Management

D1. Terminals

D2. Power & Grounding Connectors

E1. Labeling System

E2. Labels

E3. Pre-Printed & Write-On Markers

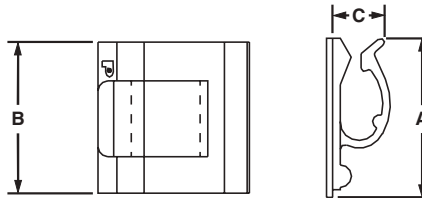
E4. Lockout/Tagout & Safety Solutions

F. Index

A. System Overview

Adhesive Backed Cord Clips

- Cables are easily snapped into or out of the clips
- For indoor use only



B1. Cable Ties

B2. Cable Accessories

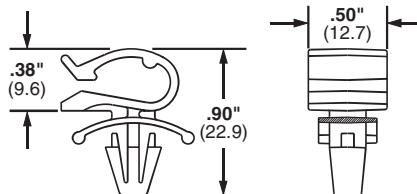
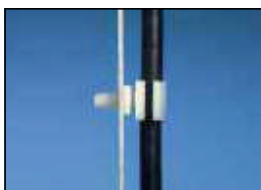
B3. Stainless Steel

Part Number	Max. Bundle Diameter		Length A		Width B		Height C		Material	Color	Adhesive Type	Max. Static Load		Std. Pkg. Qty.	Std. Ctn. Qty.	
	In.	mm	In.	mm	In.	mm	In.	mm				Lbs.	g			
ACC19-A-C	.19	4.8	.76	19.3	.63	16.0	.25	6.5	Nylon 6.6	Natural	Rubber	.20	91	100	500	
ACC19-AT-C	.19	4.8	.76	19.3	.63	16.0	.26	6.6	Nylon 6.6	Natural	Acrylic	.20	91	100	500	
ACC19-A-C20	.19	4.8	.76	19.3	.63	16.0	.27	6.7	Nylon 6.6	Black	Rubber	.20	91	100	500	
ACC19-AT-C0	.19	4.8	.76	19.3	.63	16.0	.28	6.8	Weather Resistant Nylon 6.6	Black	Acrylic	.20	91	100	500	
C2. Surface Raceway	ACC38-A-C	.38	9.6	1.00	25.4	1.00	25.4	.27	6.9	Nylon 6.6	Natural	Rubber	.50	227	100	500
	ACC38-AT-C	.38	9.6	1.00	25.4	1.00	25.4	.28	6.10	Nylon 6.6	Natural	Acrylic	.50	227	100	500
	ACC38-A-C20	.38	9.6	1.00	25.4	1.00	25.4	.29	6.11	Nylon 6.6	Black	Rubber	.50	227	100	500
C3. Abrasion Protection	ACC38-AT-C0	.38	9.6	1.00	25.4	1.00	25.4	.30	6.12	Weather Resistant Nylon 6.6	Black	Acrylic	.50	227	100	500
	ACC62-A-C	.62	15.7	1.24	31.5	1.12	28.5	.63	16.1	Nylon 6.6	Natural	Rubber	.70	318	100	500
	ACC62-AT-C	.62	15.7	1.24	31.5	1.12	28.5	.63	16.1	Nylon 6.6	Natural	Acrylic	.70	318	100	500
C4. Cable Management	ACC62-A-C20	.62	15.7	1.24	31.5	1.12	28.5	.63	16.1	Nylon 6.6	Black	Rubber	.70	318	100	500
	ACC62-AT-C0	.62	15.7	1.24	31.5	1.12	28.5	.63	16.1	Weather Resistant Nylon 6.6	Black	Acrylic	.70	318	100	500

D1. Terminals

Push Mount Cord Clip

- Cables are easily snapped into or out of clips
- Design of wing provides added stability
- Winged design holds mount in place even in applications where vibration is present
- For indoor use only



E1. Labeling System

E2. Labels

Part Number	Max. Bundle Diameter		Max. Panel Thickness		Panel Hole Diameter		Material	Color	Environment	Mounting Method	Std. Pkg. Qty.	Std. Ctn. Qty.
	In.	mm	In.	mm	In.	mm						
PMCC38H25-C	.38	9.6	.105	2.7	.250	6.4	Nylon 6.6	Natural	Indoors	Push Barb	100	1000
PMCC38H25-M0	.38	9.6	.105	2.7	.250	6.4	Weather Resistant Nylon 6.6	Black	Outdoors	Push Barb	1000	5000

E3. Pre-Printed & Write-On Markers

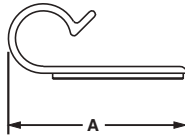
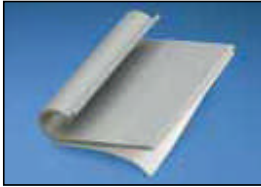
E4. Lockout/Tagout & Safety Solutions

F. Index

“J” Clips

- Low profile clips retain cords, cables, or tubing
- Flexible design allows for easy cord insertion, yet holds bundle tightly

• For indoor use only

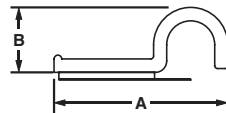


Part Number	Max. Bundle Diameter		Length A		Width B		Height C		Material	Color	Adhesive Type	Max. Static Load		Std. Pkg. Qty.	Std. Ctn. Qty.
	In.	mm	In.	mm	In.	mm	In.	mm				Lbs.	g		
AJC19-A-C	.19	4.8	1.25	31.8	.87	22.1	.26	6.6	PVC	Light Gray	Rubber	.50	227	100	1000
AJC25-A-C	.25	6.4	1.50	38.1	.97	24.6	.31	7.9				.60	272	100	1000
AJC31-A-C	.31	7.9	1.75	44.5	1.22	30.1	.40	10.2				.90	408	100	1000
AJC38-A-C	.38	9.6	2.00	50.8	1.27	32.3	.50	12.7				1.00	454	100	1000

A1C Type Clips

- Holds cords, cables and tubing
- Single rubber adhesive pad for confined areas

• For indoor use only



Part Number	Max. Bundle Diameter		Length A		Width B		Height C		Material	Color	Adhesive Type	Max. Static Load		Std. Pkg. Qty.	Std. Ctn. Qty.
	In.	mm	In.	mm	In.	mm	In.	mm				Lbs.	g		
A1C12-A-C8	.12	3.0	.77	19.6	.63	16.0	.23	5.8	PVC	Light Gray	Rubber	.14	169	100	1000
A1C25-A-C8	.25	6.4	.91	23.1	.63	16.0	.38	9.7				.14	169	100	1000
A1C38-A-C8	.38	9.5	1.04	26.4	.63	16.0	.51	13.0				.14	169	100	1000
A1C50-A-C8	.50	12.7	1.17	29.7	.63	16.0	.64	16.3				.14	169	100	1000

A. System Overview

B1. Cable Ties

B2. Cable Accessories

B3. Stainless Steel

C1. Wiring Duct

C2. Surface Raceway

C3. Abrasion Protection

C4. Cable Management

D1. Terminals

D2. Power & Grounding Connectors

E1. Labeling System

E2. Labels

E3. Pre-Printed & Write-On Markers

E4. Lockout/Tagout & Safety Solutions

F. Index

A. System Overview

B1. Cable Ties

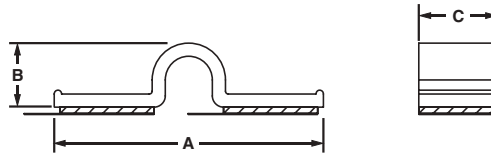
B2. Cable Accessories

B3. Stainless Steel

A2C Type Clips

- Holds cords, cables and tubing
- Two rubber adhesive pads for added strength

• For indoor use only



Part Number	Max. Bundle Dia.		Length A		Width B		Height C		Material	Color	Adhesive Type	Max. Static Load		Std. Pkg. Qty.	Std. Ctn. Qty.
	In.	mm	In.	mm	In.	mm	In.	mm				Lbs.	g		
A2C12-A-C8	.12	3.0	1.30	33.0	.63	16.0	.23	5.8	PVC	Light Gray	Rubber	.14	64	100	1000
A2C25-A-C8	.25	6.4	1.43	36.3	.63	16.0	.36	9.1				.14	64	100	1000
A2C38-A-C8	.38	9.5	1.56	39.6	.63	16.0	.49	12.4				.14	64	100	1000
A2C50-A-C8	.50	12.7	1.72	43.7	.63	16.0	.61	15.5				.14	64	100	1000

C1. Wiring Duct

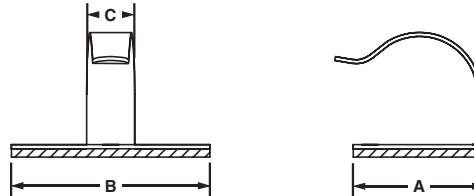
C2. Surface Raceway

C3. Abrasion Protection

C4. Cable Management

Metal Adhesive Backed Cord Clips

- Can be opened and closed without damaging clip in order to remove or add cables quickly and easily



Part Number	Max. Bundle Diameter		Length A		Width B		Clip Width C		Material	Environment	Adhesive Type	Max. Static Load		Std. Pkg. Qty.	Std. Ctn. Qty.
	In.	mm	In.	mm	In.	mm	In.	mm				Lbs.	g		
MACC25-A-C	.25	6.4	.77	19.6	.54	13.7	.29	7.4	Zinc Plated Steel	Indoors	Rubber	.21	95	100	1000
MACC62-A-C	.62	15.7	1.18	30.0	.78	19.7	.29	7.0				.44	200	100	1000

D1. Terminals

D2. Power & Grounding Connectors

E1. Labeling System

E2. Labels

E3. Pre-Printed & Write-On Markers

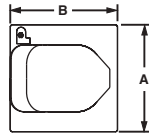
E4. Lockout/Tagout & Safety Solutions

F. Index

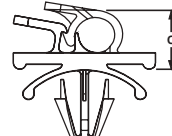
Latching Wire Clips

- Routes and secures cords and cables
- Convenient releasable latch

- Available in six sizes with releasable latch
- Rubber-based adhesive provides a strong and reliable bond



LWC**-A



LWC**-H25

Part Number	Max. Bundle Diameter		Length		Width		Height		Color	Max. Static Load		Std. Pkg. Qty.	Std. Ctn. Qty.
	In.	mm	In.	mm	In.	mm	In.	mm		Lbs.	g		
Rubber Adhesive													
LWC19-A-C	.19	4.8	.85	21.6	.61	15.5	.39	9.9	Natural	.25	113	100	1000
LWC19-A-C14	.19	4.8	.85	21.6	.61	15.5	.39	9.9	Gray	.25	113	100	1000
LWC19-A-C20	.19	4.8	.85	21.6	.61	15.5	.39	9.9	Black	.25	113	100	1000
LWC25-A-C	.25	6.4	.88	22.2	1.00	25.4	.45	11.4	Natural	.45	204	100	1000
LWC25-A-C14	.25	6.4	.88	22.2	1.00	25.4	.45	11.4	Gray	.45	204	100	1000
LWC25-A-C20	.25	6.4	.88	22.2	1.00	25.4	.45	11.4	Black	.45	204	100	1000
LWC38-A-C	.37	9.5	1.00	25.4	1.00	25.4	.56	14.2	Natural	.50	227	100	1000
LWC38-A-C14	.37	9.5	1.00	25.4	1.00	25.4	.56	14.2	Gray	.50	227	100	1000
LWC38-A-C20	.37	9.5	1.00	25.4	1.00	25.4	.56	14.2	Black	.50	227	100	1000
LWC50-A-L	.50	12.7	1.26	32.0	1.00	25.4	.67	17.0	Natural	.63	284	50	500
LWC50-A-L14	.50	12.7	1.26	32.0	1.00	25.4	.67	17.0	Gray	.63	284	50	500
LWC50-A-L20	.50	12.7	1.26	32.0	1.00	25.4	.67	17.0	Black	.63	284	50	500
LWC75-A-L	.75	19.1	1.48	37.6	1.24	31.5	.90	22.9	Natural	.93	417	50	500
LWC75-A-L14	.75	19.1	1.48	37.6	1.24	31.5	.90	22.9	Gray	.93	417	50	500
LWC75-A-L20	.75	19.1	1.48	37.6	1.24	31.5	.90	22.9	Black	.93	417	50	500
LWC100-A-L	1.00	25.4	2.21	56.1	1.97	50.0	1.26	32.0	Natural	2.25	1020	50	500
LWC100-A-L14	1.00	25.4	2.21	56.1	1.97	50.0	1.26	32.0	Gray	2.25	1020	50	500
LWC100-A-L20	1.00	25.4	2.21	56.1	1.97	50.0	1.26	32.0	Black	2.25	1020	50	500
Push Barb^													
LWC19-H25-C	.19	4.8	.85	21.6	.51	12.8	.41	10.4	Natural	—	—	100	1000
LWC19-H25-C14	.19	4.8	.85	21.6	.51	12.8	.41	10.4	Gray	—	—	100	1000
LWC25-H25-C	.25	6.4	.86	21.8	.58	14.7	.47	11.9	Natural	—	—	100	1000
LWC25-H25-C14	.25	6.4	.86	21.8	.58	14.7	.47	11.9	Gray	—	—	100	1000
LWC25-H25-C20	.25	6.4	.86	21.8	.58	14.7	.47	11.9	Black	—	—	100	1000
LWC38-H25-C	.37	9.5	.94	23.9	.58	14.7	.57	14.5	Natural	—	—	100	1000
LWC38-H25-C14	.37	9.5	.94	23.9	.58	14.7	.57	14.5	Gray	—	—	100	1000
LWC38-H25-C20	.37	9.5	.94	23.9	.58	14.7	.57	14.5	Black	—	—	100	1000
LWC50-H25-L	.50	12.7	1.25	31.8	.76	19.3	.78	19.8	Natural	—	—	50	500
LWC50-H25-L14	.50	12.7	1.25	31.8	.76	19.3	.78	19.8	Gray	—	—	50	500
LWC50-H25-L20	.50	12.7	1.25	31.8	.76	19.3	.78	19.8	Black	—	—	50	500
LWC75-H25-L	.75	19.1	1.45	36.8	.87	22.1	.97	24.7	Natural	—	—	50	500
LWC75-H25-L14	.75	19.1	1.45	36.8	.87	22.1	.97	24.7	Gray	—	—	50	500
LWC75-H25-L20	.75	19.1	1.45	36.8	.87	22.1	.97	24.7	Black	—	—	50	500
LWC100-H25-L	1.00	25.4	1.89	47.9	1.00	25.4	1.30	33.0	Natural	—	—	50	500
LWC100-H25-L14	1.00	25.4	1.89	47.9	1.00	25.4	1.30	33.0	Gray	—	—	50	500
LWC100-H25-L20	1.00	25.4	1.89	47.9	1.00	25.4	1.30	33.0	Black	—	—	50	500

^Push barb parts are for use with a max panel thickness of .105" (2.7mm) and a hole diameter of .220" (5.6mm).

A. System Overview

B1. Cable Ties

B2. Cable Accessories

B3. Stainless Steel

C1. Wiring Duct

C2. Surface Raceway

C3. Abrasion Protection

C4. Cable Management

D1. Terminals

D2. Power & Grounding Connectors

E1. Labeling System

E2. Labels

E3. Pre-Printed & Write-On Markers

E4. Lockout/Tagout & Safety Solutions

F. Index

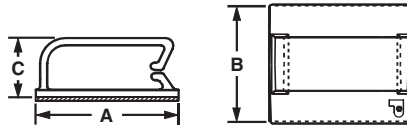
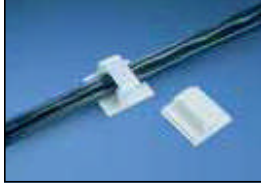
A. System Overview

Bevel Entry Clips

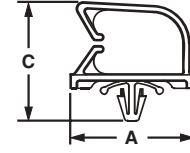
- Beveled entry allows for easy insertion of cable bundle

B1. Cable Ties

B2. Cable Accessories



BEC



BECP

B3. Stainless Steel

C1. Wiring Duct

Part Number	Max. Bundle Diameter		Length A		Width B		Height C		Material	Color	Environment	Mounting Method	Max. Static Load		Std. Pkg. Qty.	Std. Ctn. Qty.
	In.	mm	In.	mm	In.	mm	In.	mm					Lbs.	g		

Adhesive Backed

BEC38-A-L	.38	9.6	1.46	37.1	1.24	31.5	.52	13.2	Nylon 6.6	Natural	Indoors	Rubber Adhesive	.91	411	50	500
BEC38-A-L20	.38	9.6	1.46	37.1	1.24	31.5	.52	13.2	Nylon 6.6	Black	Indoors	Rubber Adhesive	.91	411	50	500
BEC38-AT-L0	.38	9.6	1.46	37.1	1.24	31.5	.52	13.2	Weather Resistant Nylon 6.6	Black	Outdoors	Acrylic Adhesive	.91	411	50	500
BEC62-A-L	.62	15.7	1.46	37.1	1.24	31.5	.79	20.1	Nylon 6.6	Natural	Indoors	Rubber Adhesive	.91	411	50	500
BEC62-A-L20	.62	15.7	1.46	37.1	1.24	31.5	.79	20.1	Nylon 6.6	Black	Indoors	Rubber Adhesive	.91	411	50	500
BEC62-AT-L0	.62	15.7	1.46	37.1	1.24	31.5	.79	20.1	Weather Resistant Nylon 6.6	Black	Outdoors	Acrylic Adhesive	.91	411	50	500
BEC62-A-T20	.62	15.7	1.46	37.1	1.24	31.5	.79	20.1	Nylon 6.6	Black	Indoors	Adhesive Backed	.91	411	200	1000
BEC75-A-L	.75	19.0	1.46	37.1	1.49	37.8	.89	22.6	Nylon 6.6	Natural	Indoors	Rubber Adhesive	1.09	493	50	500
BEC75-A-L20	.75	19.0	1.46	37.1	1.49	37.8	.89	22.6	Nylon 6.6	Black	Indoors	Rubber Adhesive	1.09	493	50	500
BEC75-AT-L0	.75	19.0	1.46	37.1	1.49	37.8	.89	22.6	Weather Resistant Nylon 6.6	Black	Outdoors	Acrylic Adhesive	1.09	493	50	500

E1. Labeling System

Push Barb

BECP38H25-L*	.38	9.6	1.46	37.1	.73	18.5	1.00	25.4	Nylon 6.6	Natural	Indoors	Inserted into Pre-Drilled Hole	—	—	50	500
BECP38H25-L20*	.38	9.6	1.46	37.1	.73	18.5	1.00	25.4		Black			—	—	50	500
BECP75H25-L*	.75	19.0	1.47	37.3	.73	18.5	1.35	34.3		Natural			—	—	50	500
BECP75H25-L20*	.75	19.0	1.47	37.3	.73	18.5	1.35	34.3		Black			—	—	50	500

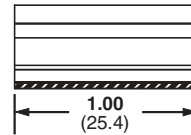
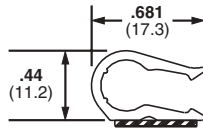
*Push barb parts are for use with a max panel thickness of .08" (1.9mm) and a hole diameter of .25" (6.4mm).

E4. Lockout/Tagout & Safety Solutions

F. Index

Adhesive Backed Dual Cord Clip

- Holds two cables in high temperature applications

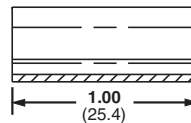
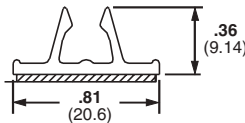


Part Number	Max. Bundle Diameter		Material	Color	Environment	Adhesive Type	Max. Static Load		Std. Pkg. Qty.	Std. Ctn. Qty.
	In.	mm					Lbs.	g		
ADCC31-AT-C10	.33	9.0	NORYL*	White	Indoors	Acrylic	.25	113	100	500

*NORYL is a registered trademark of General Electric Company.

Adhesive Backed Mount Cord Clip

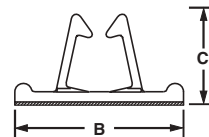
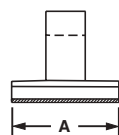
- Holds a single cable
- Vertical cable entry for ease of installation
- Funnel entry speeds cable insertion



Part Number	Max. Bundle Diameter		Material	Color	Environment	Adhesive Type	Max. Static Load		Std. Pkg. Qty.	Std. Ctn. Qty.
	In.	mm					Lbs.	g		
AMC25-AT-C10	.22 - .28	6 - 7	PVC	White	Indoors	Acrylic	.40	182	100	1000

Vertical Cord Clip

- Funnel entry design allows for easy insertion of cords and cables
- Vertical cable entry for ease of installation
- For indoor use only



Part Number	Max. Bundle Diameter		Length A		Width B		Height C		Material	Color	Adhesive Type	Max. Static Load		Std. Pkg. Qty.	Std. Ctn. Qty.
	In.	mm	In.	mm	In.	mm	In.	mm				Lbs.	g		
VCC25-A-C20	.25	6.4	1.00	25.4	.50	12.7	.44	11.2	Nylon 6.6	Black	Rubber	.25	113	100	1000
VCC25-A-C	.25	6.4	1.00	25.4	.50	12.7	.44	11.2		Natural		.25	113	100	500
VCC50-A-C	.50	12.7	1.56	39.7	1.00	25.4	.81	20.6		Natural		.78	339	100	500

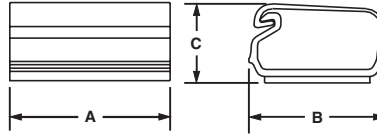
A. System Overview

Adhesive Backed Latching Clips

- Latching cover withstands vibration
- For indoor use only

B1. Cable Ties

B2. Cable Accessories



B3. Stainless Steel

Part Number	Max. Bundle Diameter		Length A		Width B		Height C		Material	Color	Adhesive Type	Max. Static Load		Std. Pkg. Qty.	Std. Ctn. Qty.
	In.	mm	In.	mm	In.	mm	In.	mm				Lbs.	g		
LC3-A-C8	.20	5.0	.75	19.1	.75	19.0	.47	11.9	PVC	Light Gray	Rubber	.22	100	100	1000
LC5-A-C8	.36	9.1	1.01	25.7	1.00	25.4	.61	15.5				.44	200	100	1000
LC10-A-L8	.93	23.6	1.51	38.4	1.00	25.4	.84	21.3				.60	272	50	500

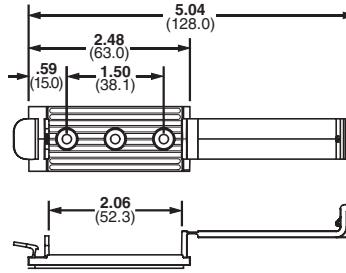
C1. Wiring Duct

C2. Surface Raceway

Cable Holder – Adhesive Backed

- Convenient releasable latch allows easy addition and removal of cables
- Low profile design provides a compact cable routing solution

- For indoor use only



C3. Abrasion Protection

C4. Cable Management

D1. Terminals

Part Number	Cable Width		Material	Color	Mounting Method	Max. Static Load		Std. Pkg. Qty.	Std. Ctn. Qty.
	In.	mm				Lbs.	g		
CH105-A-C14	2.06	52.3	Nylon 6.6	Gray	Rubber	1.28	581	100	1000
CH105-S6-C14	2.06	52.3			#6 (M3) Screw	—	—	100	1000

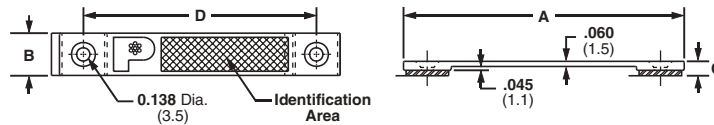
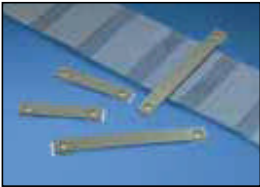
D2. Power & Grounding Connectors

E1. Labeling System

Low Profile Flat Cable Mounts

- Three sizes provide a cost effective flat cable containment for stack heights up to .105" (2.7mm)
- Features a matte, textured surface, for either hand written identification or application of computer labels
- Low profile design holds wires, cables, and tubing
- For indoor use only

E2. Labels



E3. Pre-Printed & Write-On Markers

E4. Lockout/Tagout & Safety Solutions

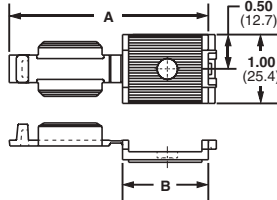
Part Number	Cable Width		Length A		Width B		Height C		Hole Spacing D		Material	Color	Adhesive Type	Std. Pkg. Qty.	Std. Ctn. Qty.
	In.	mm	In.	mm	In.	mm	In.	mm	In.	mm					
LPFCM14-A-C14	1.44	37	2.56	65.0	.50	12.7	.13	3.4	2.00	50.8	Nylon 6.6	Gray	Rubber	100	500
LPFCM22-A-C14	2.19	56	3.31	84.0	.50	12.7	.13	3.4	2.75	69.9				100	500
LPFCM34-A-C14	3.44	87	4.56	115.8	.50	12.7	.13	3.4	4.00	101.6				100	500

F. Index

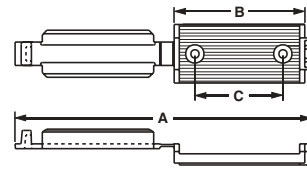
Latching Flat Cable Mounts

- Available in four sizes with a stack height of .17" (4.3mm) to accommodate different flat cable widths
- Low profile design holds wires, cables, and tubing

- Convenient releasable latch
- Large mounting base for high bonding strength
- For indoor use only



FCM1 & FCM1.2



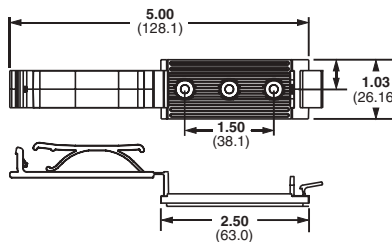
FCM2 & FCM3.25

Part Number	Cable Width		Length A		Width B		Hole Spacing C		Material	Color	Mounting Method	Std. Pkg. Qty.	Std. Ctn. Qty.
	In.	mm	In.	mm	In.	mm	In.	mm					
Adhesive Backed													
FCM1-A-C14	1.06	26.7	2.90	73.7	1.00	25.4	—	—	Nylon 6.6	Gray	Rubber adhesive	100	500
FCM1.2-A-C14	1.20	30.5	3.16	80.3	1.00	25.4	—	—				100	1000
FCM2-A-C14	2.22	56.4	5.06	128.5	1.00	25.4	2.05	52.1				100	500
FCM3.25-A-L14	3.38	85.9	7.30	185.4	1.00	25.4	3.23	82.0				50	500
Screw Mounted													
FCM1-S6-C14	1.06	26.7	1.21	30.7	1.00	25.4	—	—	Nylon 6.6	Gray	#6 (M3) Screw	100	1000
FCM1.2-S6-C14	1.21	30.7	1.37	34.8	1.20	30.5	—	—				100	1000
FCM2-S6-C14	2.22	56.4	5.06	128.5	1.00	25.4	1.50	38.1				100	1000
FCM3.25-S6-L14	3.38	85.9	3.38	85.9	1.00	25.4	3.23	82.0				50	500

Latching Flat Cable Holder

- Designed for flat cable up to a cable stack height of .25" (6.4mm) or discrete wire
- Low profile design holds wires, cables, and tubing

- Convenient releasable latch
- Large mounting base for high bonding strength
- For indoor use only



A. System Overview

B1. Cable Ties

B2. Cable Accessories

B3. Stainless Steel

C1. Wiring Duct

C2. Surface Raceway

C3. Abrasion Protection

C4. Cable Management

D1. Terminals

D2. Power & Grounding Connectors

E1. Labeling System

E2. Labels

E3. Pre-Printed & Write-On Markers

E4. Lockout/Tagout & Safety Solutions

F. Index

A. System Overview

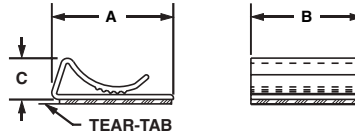
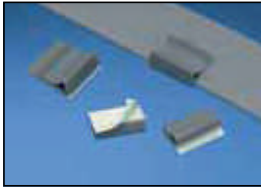
Flat Cable Clips

B1. Cable Ties

- Use with any width flat cable for a maximum stack height of .17" (4.3mm)

- Low profile design holds wires, cables, and tubing
- For indoor use only

B2. Cable Accessories



B3. Stainless Steel

C1. Wiring Duct

Part Number	Cable Width In./mm	Length A		Width B		Height C		Material	Color	Mounting Method	Std. Pkg. Qty.	Std. Ctn. Qty.
		In.	mm	In.	mm	In.	mm					
FCC5-A-C8	Any width flat cable	1.00	25.4	.56	14.2	.29	7.4	PVC	Gray	Rubber	100	1000
FCC-A-C8		1.00	25.4	1.09	27.7	.38	9.7				100	1000

C2. Surface Raceway

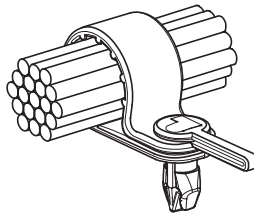
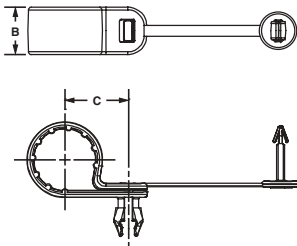
PAN-CLAMP™ Heavy Duty Fixed Diameter Clamp

C3. Abrasion Protection

- One-piece design significantly reduces installation time

- Integrated ribs prevent rotation of cable bundles and ensures secure grip on hoses

C4. Cable Management



D1. Terminals

D2. Power & Grounding Connectors

E1. Labeling System

E2. Labels

Part Number	Max. Bundle Diameter A		Width B		Bundle Offset C		Max. Panel Thickness		Panel Hole Diameter		Material	Color	Std. Pkg. Qty.	Std. Ctn. Qty.
	In.	mm	In.	mm	In.	mm	In.	mm	In.	mm				
PC038-H25D-C0	.38	9.5	.62	15.7	.64	16.3	.126	3.2	.281	7.1	Impact Modified Weather Resistant Nylon 6.6	Black	100	500
PC050-H25D-C0	.50	12.7	.62	15.7	.71	17.9	.126	3.2	.281	7.1			100	500
PC062-H25D-C0	.63	15.8	.62	15.7	.77	19.5	.126	3.2	.281	7.1			100	500
PC075-H25D-C0	.75	19.1	.62	15.7	.83	21.1	.126	3.2	.281	7.1			100	1000
PC087-H25D-C0	.88	22.1	.62	15.7	.89	22.7	.126	3.2	.281	7.1			100	1000
PC100-H25D-C0	1.00	25.4	.62	15.7	.96	24.3	.126	3.2	.281	7.1			100	1000
PC112-H25D-C0	1.13	28.5	.62	15.7	1.02	25.8	.126	3.2	.281	7.1			100	1000
PC125-H25D-C0	1.25	31.8	.62	15.7	1.08	27.4	.126	3.2	.281	7.1			100	1000

E3. Pre-Printed & Write-On Markers

E4. Lockout/Tagout & Safety Solutions

F. Index



1) Install into 3.2mm thick panel or bracket with a hole diameter of 7.1mm typical clearance hole for 6mm bolts.



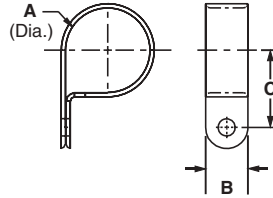
2) Molded barbs keep the clamp secured in the hole during assembly.



3) Rivet installs easily by hand. No special tools required.

Fixed Diameter Cable Clamps

- Durable nylon 6.6 cable clamps



Part Number	Max. Bundle Diameter A		Width B		Bundle Offset C		Mounting Method	Std. Pkg. Qty	Std. Ctn. Qty.
	In.	mm	In.	mm	In.	mm			
CCS12-S8-C	.12	3.1	.37	9.4	.33	8.4	#8 (M4) Screw	100	500
CCS19-S8-C	.19	4.8	.37	9.4	.43	10.9	#8 (M4) Screw	100	500
CCS25-S8-C	.25	6.3	.37	9.4	.41	10.4	#8 (M4) Screw	100	500
CCS25-S10-C	.25	6.3	.37	9.4	.41	10.4	#10 (M5) Screw	100	500
CCS31-S8-C	.32	7.9	.37	9.4	.49	12.4	#8 (M4) Screw	100	500
CCS38-S8-C	.38	9.5	.37	9.4	.59	15.0		100	500
CCS44-S8-C	.44	11.1	.37	9.4	.57	14.5		100	500
CCS50-S8-C	.50	12.7	.37	9.4	.60	15.2		100	500
CCH12-S10-C	.12	3.1	.50	12.7	.36	9.1	#10 (M5) Screw	100	500
CCH19-S10-C	.19	4.8	.50	12.7	.42	10.7		100	500
CCH25-S10-C	.25	6.3	.50	12.7	.46	11.7		100	500
CCH31-S10-C	.32	7.9	.50	12.7	.50	12.7		100	500
CCH38-S10-C	.38	9.5	.50	12.7	.54	13.5		100	500
CCH44-S10-C	.44	11.1	.50	12.7	.56	14.2		100	500
CCH50-S10-C	.50	12.7	.50	12.7	.59	15.0		100	500
CCH56-S10-C	.58	14.2	.50	12.7	.61	15.5		100	500
CCH62-S10-C	.62	15.7	.50	12.7	.65	16.5		100	500
CCH69-S10-C	.69	17.5	.50	12.7	.75	19.1		100	500
CCH75-S10-C	.76	19.1	.50	12.7	.78	19.8		100	500
CCH81-S10-C	.81	20.6	.50	12.7	.81	20.6		100	500
CCH87-S10-C	.87	22.1	.50	12.7	.84	21.3		100	500
CCH100-S10-C	1.00	25.4	.50	12.7	.91	23.1		100	500
CCH112-S10-C	1.12	28.4	.50	12.7	.97	24.6		100	500
CCH119-S10-C	1.19	30.2	.50	12.7	1.00	25.4		100	500
CCH125-S10-C	1.25	31.8	.50	12.7	1.06	26.9	100	500	
CCH138-S10-C	1.37	34.8	.50	12.7	1.12	28.4	100	500	
CCH150-S10-C	1.50	38.1	.50	12.7	1.19	30.2	100	500	

All parts listed are also available in black weather resistant material (add suffix 0). Bulk package only.

A. System Overview

B1. Cable Ties

B2. Cable Accessories

B3. Stainless Steel

C1. Wiring Duct

C2. Surface Raceway

C3. Abrasion Protection

C4. Cable Management

D1. Terminals

D2. Power & Grounding Connectors

E1. Labeling System

E2. Labels

E3. Pre-Printed & Write-On Markers

E4. Lockout/Tagout & Safety Solutions

F. Index

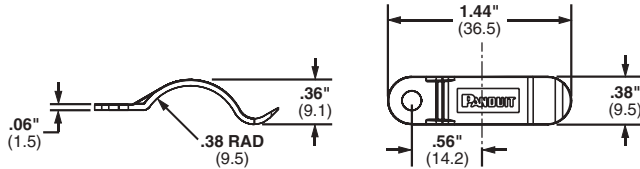
A. System Overview

Wire Retainers

- Wires slide into the clip and are held in place by tension
- Low profile design holds wires, cables, and tubing
- Funnel entry design allows for easy insertion of cords and cables

B1. Cable Ties

B2. Cable Accessories



B3. Stainless Steel

Part Number	Max. Bundle Diameter		Material	Color	Environment	Mounting Method	Std. Pkg. Qty.	Std. Ctn. Qty.
	In.	mm						
TWR-C	.38	9.5	Nylon 6.6	Natural	Indoors	#6 (M3) Screw	100	500
TWR-CO	.38	9.5	Weather Resistant Nylon 6.6	Black	Outdoors	#6 (M3) Screw	100	500

C1. Wiring Duct

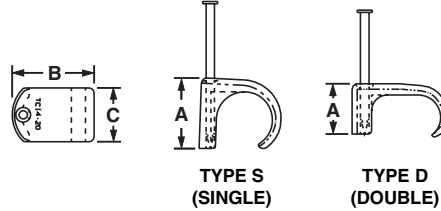
C2. Surface Raceway

Tack Clips

C3. Abrasion Protection

- Clips secure cords, cables and tubing
- Suitable for outdoor use
- Hardened steel nail securely mounts to wooden surfaces

C4. Cable Management



D1. Terminals

D2. Power & Grounding Connectors

Part Number	Type	Bundle Capacity		Length A		Width B		Height C		Coaxial Cross RG#	Material	Color	Std. Pkg. Qty.	Std. Ctn. Qty.
		In.	mm	In.	mm	In.	mm	In.	mm					
TC3-5-C100	Single	.13	3.3	.29	7.4	.23	5.8	.20	5.1	187	Weather Resistant Polypropylene	Black	100	1000
TC5-7-C100	Single	.21	5.3	.39	9.9	.23	5.8	.31	7.9	58			100	1000
TC7-10-C100	Single	.27	6.9	.49	12.5	.35	8.9	.38	9.7	59			100	1000
TC10-14-C100	Single	.35	8.9	.59	14.9	.45	11.4	.51	13	6A			100	1000
TC14-20-C100	Single	.52	13.2	.79	20.6	.54	13.7	.67	17	8A, 9B, 11			100	1000
TC5X8-C100	Double	.20 x .31	5 x 7.9	.54	13.7	.27	6.8	.30	8.8	—			100	1000
TC6X10-C100	Double	.23 x .38	6 x 9.7	.62	15.7	.34	8.6	.34	8.6	—			100	1000
TC7X14-C100	Double	.25 x .46	6.4 x 12	.70	17.8	.43	10.9	.36	9.1	—			100	1000
TC9X18-C100	Double	.37 x .65	9.4 x 17	.89	22.6	.52	13.2	.50	12.7	—			100	1000

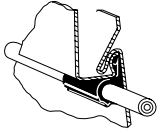
E3. Pre-Printed & Write-On Markers

E4. Lockout/Tagout & Safety Solutions

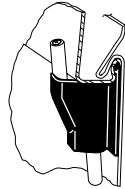
F. Index

Siding Clips

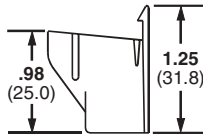
- Low profile installs without drilling or nailing
- Attaches coax cable to buildings having "Pittsburgh Interlok" type aluminum or steel siding
- Will not corrode or stain siding



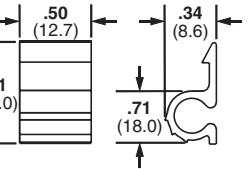
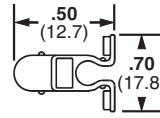
Horizontal Siding Clip



Vertical Siding Clip



VSC Vertical Clip

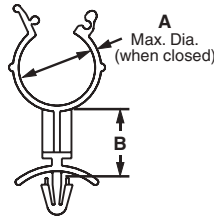


HSC Horizontal Clip

Part Number	Max. Bundle Diameter		Material	Color	Mounting Method	Std. Pkg. Qty.	Std. Ctn. Qty.
	In.	mm					
HSC.25-L	.25	6.4	Nylon 6.6	White	Clip	50	500
HSC.25-L100	.25	6.4	Weather Resistant Polypropylene	Black	Clip	50	500
VSC.25-L	.25	6.4	Nylon 6.6	White	Clip	50	500
VSC.25-L100	.25	6.4	Weather Resistant Polypropylene	Black	Clip	50	500

Wire Standoffs

- For retaining wires, cable, components or tubing away from panel or conductive chassis
- Finger grip flanges can be easily locked or unlocked for revisions
- Design of wing provides added stability



Part Number	Max. Bundle Diameter A		Standoff Height B		Max. Panel Thickness		Panel Hole Diameter		Material	Color	Mounting Method	Std. Pkg. Qty.	Std. Ctn. Qty.
	In.	mm	In.	mm	In.	mm	In.	mm					
WS25-25-C	.25	6.4	.25	6.4	.08	2.0	.187	4.7	Nylon 6.6	Natural	Push Barb	100	500
WS25-50-C	.25	6.4	.50	12.7	.08	2.0	.187	4.7				100	500
WS25-75-C	.25	6.4	.75	19.1	.08	2.0	.187	4.7				100	500
WS35-25-C	.35	8.9	.25	6.4	.08	2.0	.187	4.7				100	500
WS35-50-C	.35	8.9	.50	12.7	.08	2.0	.187	4.7				100	500
WS35-75-C	.35	8.9	.75	19.1	.08	2.0	.187	4.7				100	500
WS50-25-C	.47	11.9	.25	6.4	.08	2.0	.187	4.7				100	500
WS50-50-C	.47	11.9	.50	12.7	.08	2.0	.187	4.7				100	500
WS50-75-C	.47	11.9	.75	19.1	.08	2.0	.187	4.7				100	500
WS75-25-C	.78	19.8	.25	6.4	.08	2.0	.187	4.7				100	500
WS75-50-C	.78	19.8	.50	12.7	.08	2.0	.187	4.7				100	500
WS75-75-C	.78	19.8	.75	19.1	.08	2.0	.187	4.7				100	500

A. System Overview

B1. Cable Ties

B2. Cable Accessories

B3. Stainless Steel

C1. Wiring Duct

C2. Surface Raceway

C3. Abrasion Protection

C4. Cable Management

D1. Terminals

D2. Power & Grounding Connectors

E1. Labeling System

E2. Labels

E3. Pre-Printed & Write-On Markers

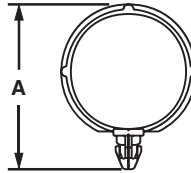
E4. Lockout/Tagout & Safety Solutions

F. Index

Snap-In Clips

• Clips around bundle to hold securely in place

• Clips are placed on the bundle then attached to the panel

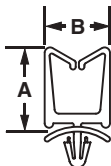
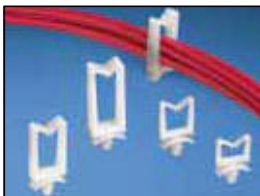


Part Number	Max. Bundle Diameter		Height A		Max. Panel Thickness		Panel Hole Diameter		Material	Color	Mounting Method	Std. Pkg. Qty.	Std. Ctn. Qty.
	In.	mm	In.	mm	In.	mm	In.	mm					
SICH25-C	.25	6.4	.40	20.9	.10	2.5	.250	6.4	Nylon 6.6	Natural	Push Barb	100	500
SICH38-C	.38	9.7	.54	24.9	.10	2.5	.250	6.4				100	500
SICH50-C	.50	12.7	.67	28.2	.10	2.5	.250	6.4				100	500
SICH75-C	.75	19.1	.96	35.6	.10	2.5	.250	6.4				100	500
SICH100-C	1.00	25.4	1.21	41.9	.10	2.5	.250	6.4				100	500
SICH150-C	1.50	38.0	1.71	54.6	.10	2.5	.250	6.4				100	500

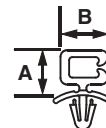
Wire Saddles

• Funnel entry design for fast insertion of wires and cables
• Available in vertical and horizontal loading configurations

• Design of wing provides added stability



VWS Vertical



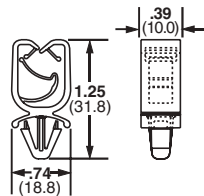
HWS Horizontal

Part Number	Max. Bundle Capacity		Width A		Height B		Max. Panel Thickness		Panel Hole Diameter		Material	Color	Mounting Method	Std. Pkg. Qty.	Std. Ctn. Qty.
	In.	mm	In.	mm	In.	mm	In.	mm	In.	mm					
VWS4218-C	.18 x .42	5.0 x 11.0	.60	15.2	.58	14.7	.08	2.0	.19	4.7	Nylon 6.6	Natural	Push Barb	100	500
VWS4238-C	.40 x .42	10.0 x 11.0	.60	15.2	.78	19.8	.08	2.0	.19	4.7				100	500
VWS4274-C	.74 x .42	19.0 x 11.0	.60	15.2	1.14	29.0	.08	2.0	.19	4.7				100	500
VWS42105-C	1.05 x .42	27.0 x 11.0	.60	15.2	1.45	36.8	.08	2.0	.19	4.7				100	1000
HWS2819-C	.19 x .28	5.0 x 11.0	.44	11.2	.42	10.7	.08	2.0	.19	4.7				100	500

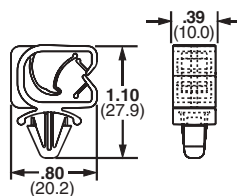
Harness Clips

- Integral “spring” holds wire bundles tightly
- Available in vertical and horizontal loading configurations

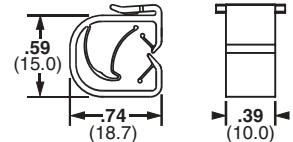
- Design of wing provides added stability



HCMP06B



HCMP06C



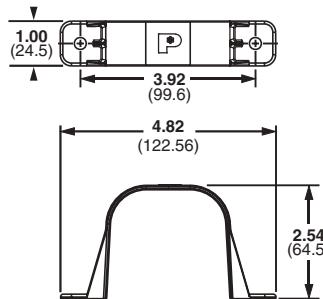
HCME06A12

Part Number	Max. Bundle Diameter Range		Max. Panel Thickness		Panel Hole Diameter		Material	Color	Environment	Mounting Method	Std. Pkg. Qty.	Std. Ctn. Qty.
	In.	mm	In.	mm	In.	mm						
HCMP06B12-C20	.24 – .47	5.9 – 12.5	.118	3.0	.25	6.4	Nylon 6.6	Black	Indoor	Push Mount	100	500
HCMP06C12-C20	.24 – .47	5.9 – 12.5	.105	2.7	.25	6.4	Nylon 6.6	Black	Indoor	Push Mount	100	500
HCME06A12-C130	.24 – .47	5.9 – 12.5	.047	1.2	.16 x .43	4.0 x 10.9	Acetal	Black	Outdoors	Clip	100	500

Wire Bundle Strap

- Securely routes large cable bundles

- Rounded edges prevent damage to cable jackets



Part Number	Bundle Retaining Area Square Inch	Material	Color	Mounting Method	Std. Pkg. Qty.	Std. Ctn. Qty.
WBS6-Q	6.00	ABS	White	1/4" (M6) Screw	25	125

A. System Overview

B1. Cable Ties

B2. Cable Accessories

B3. Stainless Steel

C1. Wiring Duct

C2. Surface Raceway

C3. Abrasion Protection

C4. Cable Management

D1. Terminals

D2. Power & Grounding Connectors

E1. Labeling System

E2. Labels

E3. Pre-Printed & Write-On Markers

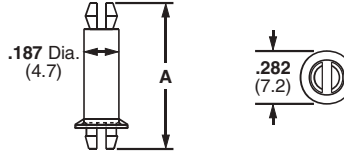
E4. Lockout/Tagout & Safety Solutions

F. Index

A. System Overview

Circuit Board Posts

- For board-to-board or board-to-chassis mounting
- Releasable and reusable
- Bell flange on bottom end provides greater stability



B1. Cable Ties

B2. Cable Accessories

B3. Stainless Steel

C1. Wiring Duct

C2. Surface Raceway

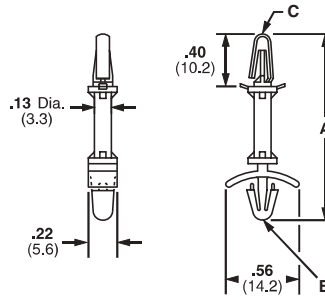
C3. Abrasion Protection

Part Number	Standoff Height		Height A		Panel Hole Diameter		Material	Color	Mounting Method	Std. Pkg. Qty.	Std. Ctn. Qty.
	In.	mm	In.	mm	In.	mm					
CBP12-C	.12	3.0	.40	10.2	.156	3.96	Nylon 6.6	Natural	Push Barb	100	500
CBP25-C	.25	6.4	.54	13.5	.156	3.96				100	500
CBP31-C	.31	7.9	.59	15.0	.156	3.96				100	500
CBP37-C	.37	9.4	.62	15.7	.156	3.96				100	500
CBP50-C	.50	12.7	.78	19.8	.156	3.96				100	500
CBP62-C	.62	15.7	.91	23.0	.156	3.96				100	500
CBP75-C	.75	19.1	1.04	26.2	.156	3.96				100	500
CBP87-C	.87	22.1	1.15	29.2	.156	3.96				100	500
CBP100-C	1.00	25.4	1.28	32.5	.156	3.96				100	500

C4. Cable Management

Circuit Board Locking Supports

- For board-to-chassis support
- Design of wing provides added stability
- Snap-in design for fast assembly
- Releasable and reusable



D1. Terminals

D2. Power & Grounding Connectors

E1. Labeling System

E2. Labels

Part Number	Standoff Height		Height A		Panel Hole Diameter B		Chassis Panel Hole Diameter C		Material	Color	Mounting Method	Std. Pkg. Qty.	Std. Ctn. Qty.
	In.	mm	In.	mm	In.	mm	In.	mm					
CBLS18-C	.187	4.7	.92	23.4	.187	4.75	.187	4.75	Nylon 6.6	Natural	Push Barb	100	500
CBLS25-C	.250	6.4	.98	24.9	.187	4.75	.187	4.75				100	500
CBLS37-C	.375	9.5	1.11	28.2	.187	4.75	.187	4.75				100	500
CBLS50-C	.500	12.7	1.23	31.2	.187	4.75	.187	4.75				100	500
CBLS62-C	.625	15.9	1.35	34.3	.187	4.75	.187	4.75				100	500
CBLS75-C	.750	19.1	1.48	37.5	.187	4.75	.187	4.75				100	500

E3. Pre-Printed & Write-On Markers

E4. Lockout/Tagout & Safety Solutions

F. Index

Harness Board Accessories

PANDUIT harness board accessories provide fast routing and forming of wires in harness fabrication. They hold the wires off the harness board at a uniform height for easy application of cable ties. The accessories are designed for use with various PANDUIT cable tie installation tools. To maintain the harness at a uniform height of approx. 1.33" (33.8mm) (at the center of the harness) above the board, use RER Elastic Retainers, BR.75-E6 or BR.5-E6, CPH.75-S8, TJF and SHH1-S8 or SHH3-S8 harness board accessories. This height is suitable for use with PAT1M Automatic Cable Tie Installation Tool.



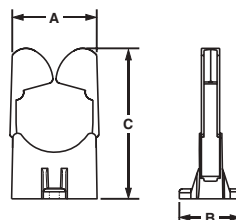
Replacement Elastic
For economy, the elastic band can be replaced in the RER Elastic Retainers without removing the RER base.

Part Number	Pkg. Qty.
RER.5E-X	10
RER.75E-X	10
RER1.25E-X	10

Replaceable Elastic Retainers

- Cable bundles are formed as individual wires are inserted
- Completed bundles can be easily removed

- The elastic band is replaceable
- For indoor use only

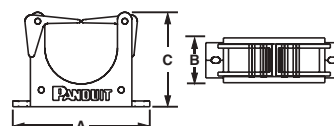


Part Number	Max. Bundle Diameter		Length A		Width B		Height C		Material	Color	Mounting Method	Std. Pkg. Qty.	Std. Ctn. Qty.
	In.	mm	In.	mm	In.	mm	In.	mm					
RER.5-S6-X	.50	12.7	1.18	30.0	.84	21.3	1.89	48.0	Nylon 6.6	Black Base, White Arm	Two #6 (M3) Screws	10	50
RER.75-S6-X	.75	19.0	1.18	30.0	1.12	28.4	2.21	56.1				10	50
RER1.25-S6-X	1.25	31.8	1.18	30.0	1.64	41.7	2.86	72.6				10	50

Elastic Retainers

- Cable bundles are formed as cable bundles are inserted
- Completed bundles can be easily removed

- For indoor use only



Part Number	Max. Bundle Diameter		Length A		Width B		Height C		Material	Color	Mounting Method	Std. Pkg. Qty.	Std. Ctn. Qty.
	In.	mm	In.	mm	In.	mm	In.	mm					
ER.5-E4-X	.50	12.7	1.96	49.8	.56	14.2	1.00	25.4	Nylon 6.6	Black	Two #4 (M2.5) Screws	10	100
ER1.25-E4-X	1.25	31.8	2.90	73.7	.95	24.08	2.00	50.8				10	100

A. System Overview

B1. Cable Ties

B2. Cable Accessories

B3. Stainless Steel

C1. Wiring Duct

C2. Surface Raceway

C3. Abrasion Protection

C4. Cable Management

D1. Terminals

D2. Power & Grounding Connectors

E1. Labeling System

E2. Labels

E3. Pre-Printed & Write-On Markers

E4. Lockout/Tagout & Safety Solutions

F. Index

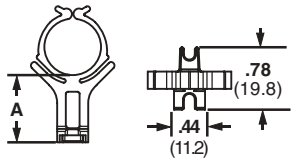
A. System Overview

Bundle Retainers

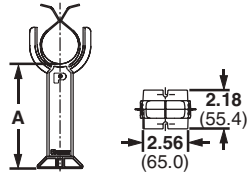
- Funnel entry allows fast cable insertion
- Completed bundles can be easily removed
- For indoor use only

B1. Cable Ties

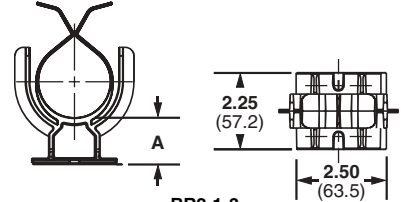
B2. Cable Accessories



BR.5 and BR.75



BR2



BR2-1.3

B3. Stainless Steel

C1. Wiring Duct

C2. Surface Raceway

C3. Abrasion Protection

C4. Cable Management

D1. Terminals

D2. Power & Grounding Connectors

E1. Labeling System

E2. Labels

E3. Pre-Printed & Write-On Markers

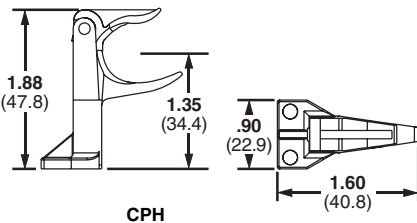
E4. Lockout/Tagout & Safety Solutions

F. Index

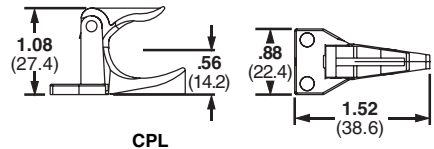
Part Number	Max. Bundle Diameter		Standoff Height A		Material	Color	Mounting Method	Std. Pkg. Qty.	Std. Ctn. Qty.
	In.	mm	In.	mm					
BR.5-E6-C	.50	12.7	1.05	26.7	Impact Resistant Nylon 6.6	Black	Two #6 (M3) Screws	100	500
BR.75-E6-C	.75	19.0	.94	23.9	Impact Resistant Nylon 6.6		Two #6 (M3) Screws	100	500
BR2-1.3-X	2.00	50.8	1.32	33.5	Glass Filled Nylon 6.6		Two 1/4" (M6) Screws	10	100
BR2-1.3-A-X	2.00	50.8	1.35	34.3			Rubber Adhesive	10	100
BR2-1.5-X	2.00	50.8	1.59	40.4			Two 1/4" (M6) Screws	10	100
BR2-4-X	2.00	50.8	4.06	103.1			Two 1/4" (M6) Screws	10	100
BR2-6-X	2.00	50.8	6.02	152.9			Two 1/4" (M6) Screws	10	100

Corner Posts

- Designed to pre-form tight bundles at harness corners and breakouts
- Top arm rotates upward for easy removal of completed harness
- For indoor use only



CPH

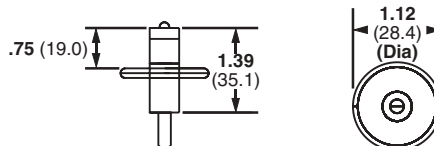


CPL

Part Number	Max. Bundle Diameter		Material	Color	Mounting Method	Std. Pkg. Qty.	Std. Ctn. Qty.
	In.	mm					
CPH.75-S8-X	.75	19.0	Nylon 6.6	Black	Two #8 (M4) Screws	10	100
CPL.75-S8-X	.75	19.0	Nylon 6.6	Black	Two #8 (M4) Screws	10	100

T-Junction Fixture

- Forms cable junctions
- Fixture moves down for easy harness removal
- For indoor use only

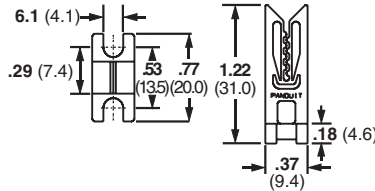


Part Number	Max. Bundle Diameter		Material	Color	Mounting Method	Std. Pkg. Qty.	Std. Ctn. Qty.
	In.	mm					
TJF-X	1.34	34.0	Nylon 6.6 and Nickel Plated Steel	Black	Nail	10	100

Wire End Holder

- Secures wire ends while harness is being fabricated
- Used with #28 thru #16 AWG wires

- For indoor use only

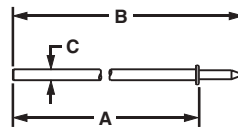


Part Number	Material	Color	Mounting Method	Std. Pkg. Qty.	Std. Ctn. Qty.
WEH-E8-C	Acetal	Black	Two #8 (M4) Screws	100	1000

Harness Board Nails

- Speeds routing of wires
- Uniform driving depth is insured by a collar stop

- Smooth finish on nails prevents abrasion to wire jackets
- For indoor use only



Part Number	Overall Length A		Length B		Thickness C		Material	Mounting Method	Std. Pkg. Qty.	Std. Ctn. Qty.
	In.	mm	In.	mm	In.	mm				
HBN.75-T	1.37	34.8	.75	19.1	.073	1.9	Nickel Plated Steel	Hammered into Harness Board	200	1000
HBN1-T	1.62	41.1	1.00	25.4	.073	1.9			200	1000
HBN1.5-T	2.12	53.8	1.50	38.1	.082	2.1			200	1000
HBN2-T	2.62	66.5	2.00	50.8	.093	2.4			200	1000
HBN2.5-T	3.12	79.2	2.50	63.5	.110	2.8			200	1000
HBN3-T	3.62	91.9	3.00	76.2	.120	3.0			200	1000
HBN4-T	4.62	117.3	4.00	101.6	.144	3.7			200	1000

A. System Overview

B1. Cable Ties

B2. Cable Accessories

B3. Stainless Steel

C1. Wiring Duct

C2. Surface Raceway

C3. Abrasion Protection

C4. Cable Management

D1. Terminals

D2. Power & Grounding Connectors

E1. Labeling System

E2. Labels

E3. Pre-Printed & Write-On Markers

E4. Lockout/Tagout & Safety Solutions

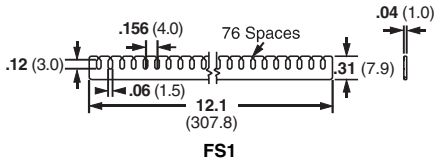
F. Index

A. System Overview

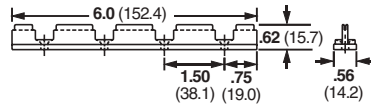
Fanning Strip System

- Holds wires in a specific orientation
- No sharp edges to damage wire insulation
- Will accept wires up to 18 AWG

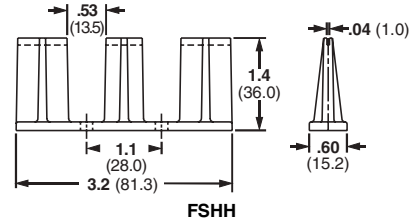
- Fanning strip can remain as part of completed harness



FS1



FSH40



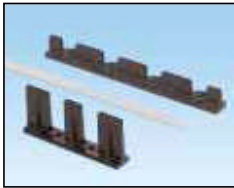
FSHH

B1. Cable Ties

B2. Cable Accessories

B3. Stainless Steel

C1. Wiring Duct



Part Number	Material	Color	Mounting Method	Std. Pkg. Qty.	Std. Ctn. Qty.
FS156-C	Nylon 6.6	Natural	—	100	1000
FSH40-X	ABS	Gray	Four #8 (M4) Screws	10	100
FSHH-X	ABS	Gray	Two #8 (M4) Screws	10	100

C2. Surface Raceway

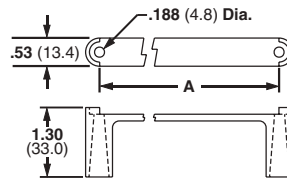
Spring Wire Breakout System

- Harness board spring and spring holder holds wire ends secure while harness is being fabricated

- Wires simply pull out from spring when harness is removed

C3. Abrasion Protection

C4. Cable Management



SHH



PBSC

D1. Terminals

D2. Power & Grounding Connectors

Part Number	Hole Spacing A		Material	Color	Mounting Method	Std. Pkg. Qty.	Std. Ctn. Qty.
	In.	mm					
PBSC1-X	1.00	25.4	Steel	—	SHH1 Spring Holder	10	100
PBSC3-X	3.00	76.2	Steel	—	—	10	100
PBSC6-X	6.00	152.4	Steel	—	SHH3 Spring Holder	10	100
PBSC12-X	12.00	304.8	Steel	—	—	10	100
SHH1-S8-X*	1.85	47.0	Nylon 6.6	Natural	Two #8 (M4) Screws	10	100

*Supplied with two #8 (M4) screws.

E1. Labeling System

Harness Board Standoff Posts

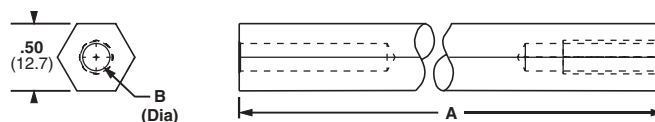
- Used to hold a push mount accessory or cable tie at a specific location on a harness board

E2. Labels

E3. Pre-Printed & Write-On Markers

E4. Lockout/Tagout & Safety Solutions

F. Index



Part Number	Height A		Hole Diameter B		For Use With	Material	Mounting Method	Std. Pkg. Qty.	Std. Ctn. Qty.
	In.	mm	In.	mm					
HB2SP19-X	2.00	50.8	.20	5.1	PLWP, PRWP, WS, VWS, HWS, TPM	Aluminum	M6 Screw	10	100
HB2SP25-X	4.00	101.6	.30	7.5	PLWP, PRWP, PLP, THMS, HCMP, PMCC	Aluminum	M6 Screw	10	100

Physical Properties and Colors of Cable Accessory Materials

Design Criteria	Nylon 6.6		Weather Resistant Nylon 6.6	Impact Modified Weather Resistant Nylon 6.6	Heat Stabilized Nylon 6.6	Flame Retardant Nylon 6.6		Glass Filled Flame Retardant Nylon 6.6
	Natural	Black	Black	Black	Black	Black	Natural	Black
Color	Natural	Black	Black	Black	Black	Black	Natural	Black
Part Number Suffix	None	20	0	0	30	60	69	None
UL Flammability – UL94	V-2	V-2	V-2	HB	V-2	V-0	V-0	V-0
Gamma Radiation Resistance	1x10 ⁵ Rads	1x10 ⁵ Rads	1x10 ⁵ Rads	N/A	1x10 ⁵ Rads	1x10 ⁵ Rads	1x10 ⁵ Rads	N/A
Water Absorption	1.2% (24 hrs)	1.2% (24 hrs)	1.2% (24 hrs)	1.2% (24 hrs)	1.2% (24 hrs)	1.1% (24 hrs)	1.1% (24 hrs)	0.7% (24 hrs)
UV Resistance	Poor	Fair	Good	Good	Fair	Poor	Poor	Poor
Maximum Continuous Use Temperature	185°F (85°C)	185°F (85°C)	85°F (85°C)	185°F (85°C)	257°F (125°C)	230°F (110°C)	230°F (110°C)	230°F (110°C)
Minimum Continuous Use Temperature	-40°F (-40°C)	-40°F (-40°C)	-40°F (-40°C)	-40°F (-40°C)	-40°F (-40°C)	-40°F (-40°C)	-40°F (-40°C)	-40°F (-40°C)

Physical Properties and Colors of Cable Accessory Materials (continued)

Design Criteria	Heat Stabilized Nylon 6		TEFZEL [®]	General Purpose Polypropylene	Weather Resistant Polypropylene	General Purpose ABS		Weather Resistant ABS	Flame Retardant Polycarbonate	Acetal	PVC
	Black	Natural	Black	Black	Black	Black	Natural	Black	Black	Black	Gray, White
Color	Black	Natural	Black	Black	Black	Black	Natural	Black	Black	Black	Gray, White
Part Number Suffix	630	639	76	None/109	100	None	20	0	None	None	8,10
UL Flammability – UL 94	HB	HB	V-0	HB	HB	HB	HB	HB	V-0	HB	V-0
Gamma Radiation Resistance	N/A	N/A	2x10 Rads	1x10 Rads	1x10 Rads	N/A	N/A	N/A	N/A	N/A	N/A
Water Absorption (24 Hours)	1.5% (24 hrs)	1.5% (24 hrs)	<.3% (24 hrs)	.1% (24 hrs)	.1% (24 hrs)	.3% (24 hrs)	.3% (24 hrs)	.3% (24 hrs)	.15% (24 hrs)	.43% (24 hrs)	.3% (24 hrs)
UV Resistance	Fair	Poor	Excellent	Poor	Good	Poor	Fair	Good	Good	Fair	Poor
Maximum Continuous Use Temperature	250°F (121°C)	250°F (121°C)	302°F (150°C)	221°F (105°C)	221°F (105°C)	185°F (85°C)	185°F (85°C)	185°F (85°C)	257°F (125°C)	194°F (90°C)	122°F (50°C)
Minimum Continuous Use Temperature	-40°F (-40°C)	-40°F (-40°C)	-50°F (-46°C)	-40°F (-40°C)	-40°F (-40°C)	-40°F (-40°C)	-40°F (-40°C)	-40°F (-40°C)	-40°F (-40°C)	-40°F (-40°C)	-40°F (-40°C)

[®]TEFZEL is a registered trademark of E.I. du Pont de Nemours and Company.

Selection and Use of Adhesive Mounts

PANDUIT adhesive mounts provide a quick, economical and dependable method of supporting, routing and protecting wires or cables. Some are used with PANDUIT cable ties and others can be used without cable ties. Adhesive backed mounts adhere to a variety of surfaces. This alternative to mechanical fasteners offers the advantage of lower installed cost with safe, easy to use, quality products.

Applications

- To route wires in control panels and switchboards
- To support bundles of wires away from moving mechanical devices
- Routing and harnessing cables, both indoors and out, to prevent safety hazards
- To organize flat cables in many locations with low profile construction
- Ideal for supporting wire bundles where holes cannot be made in the substrate
- To separate groups of wires for identification



A. System Overview

Selection and Use of Adhesive Mounts (continued)

B1. Cable Ties

General Mount Guidelines

PANDUIT pressure sensitive adhesive (foam tape) mounts are intended to secure wire bundles or other light objects to smooth surfaces. These mounts are not designed to support excessive loads and should not be used when the maximum expected load exceeds the rated capacity of the mount.

B2. Cable Accessories

Choosing the Right Adhesive

PANDUIT offers two standard pressure sensitive foam tapes which are available on most adhesive backed wiring accessories products. The general purpose tape is produced with a rubber based adhesive and is identified by an “-A” in the part number. This tape develops its strength extremely fast and can be used in environments with temperatures ranging from -20°F to +120°F. It is recommended that rubber based adhesive mounts dwell 2 hours after installation, prior to loading. Rubber based adhesive tape is the best choice for most adhesive mount applications, including powder coated surfaces.

C1. Wiring Duct

Acrylic based adhesive tape is also available and is identified by an “-AT” in the part number. This tape is for use in environments where continuous exposure to temperatures as high as 180°F is possible. Acrylic based adhesive develops its maximum strength over a longer period of time than rubber based adhesive. It is recommended that acrylic adhesive mounts dwell 8 hours after installation, prior to loading. Acrylic based adhesive tape is a good choice for environments with prolonged exposure to UV rays or temperatures above 120°F.

C2. Surface Raceway

C3. Abrasion Protection

PANDUIT also offers a two-part epoxy for use in applications where excessive loading is required, or where the surface to which the mount must be applied is porous rather than smooth. *PANDUIT* EMA adhesive is a two-part epoxy cement which is packaged in convenient mixer cups containing an equal amount of resin and hardener. Peel the protective covering off and pop the center of the cup in to form a mixing bowl. Each cup is supplied with a mixer stick and contains enough epoxy to properly apply three EMS mounts. The resin and hardener should be thoroughly mixed together until the epoxy is a consistent and uniform color. The mixer stick can then be used to apply the adhesive to the mount. The epoxy should be forced into the grooves on the bottom of the mount to obtain optimum bond performance. The mount should be applied to the surface with light pressure and a back-and-forth twisting motion. Hardening of the epoxy begins five minutes after mixing at room temperature.

C4. Cable Management

D1. Terminals

D2. Power & Grounding Connectors

Application Chart

Since *PANDUIT* manufactures adhesive backed mounts with a variety of adhesive types, this chart should be used as a guideline for choosing the best adhesive for often-encountered conditions. Each type of adhesive is rated good, fair or poor for some specific mounting surfaces and/or chemical environments.

Surfaces	Rubber Based Foam Tape Mounts	Acrylic Based Foam Tape Mounts	Epoxy Applied Adhesive Mounts
Plastics	Good	Good	Good
Wood	Good	Good	Good
Glass	Fair	Good	Good
Painted Surfaces	Good	Good	Fair
Powder Coating	Good	Fair	Good
Metal	Good ¹	Good ¹	Good
Paper	Good	Good	Fair
Concrete, Stone, Masonry	Not Recommended	Not Recommended	Good
Chemical Resistance			
Water	Good	Good	Poor
Oil	Poor	Fair ³	Good
Gasoline	Poor	Fair ³	Fair
Dilute Acids	Poor	Fair ³	Fair
Dilute Alkalies	Good	Fair ³	Fair
Organic Solvents	Poor	Fair ³	Not Recommended
Outdoor Exposure	Not Recommended	Good	Good ²

E1. Labeling System

Mount Spacing

To determine the number of mounts to use in a given application, the following formula can be used as a guideline:

$$\frac{\text{Cable or weight (Lbs./ft.)}}{\text{Static Load rating of Mount (Lbs./mt.)}} = \text{Spacing} \frac{\text{Mounts}}{\text{ft.}}$$

1. Not recommended for use on copper or brass.

2. Mounts manufactured from outdoor material only. For specific applications, individual testing prior to extensive use is suggested.

3. Depends on concentration, exposure time and chemical composition.

E2. Labels

E3. Pre-Printed & Write-On Markers

E4. Lockout/Tagout & Safety Solutions

F. Index

Selection and Use of Adhesive Mounts (continued)

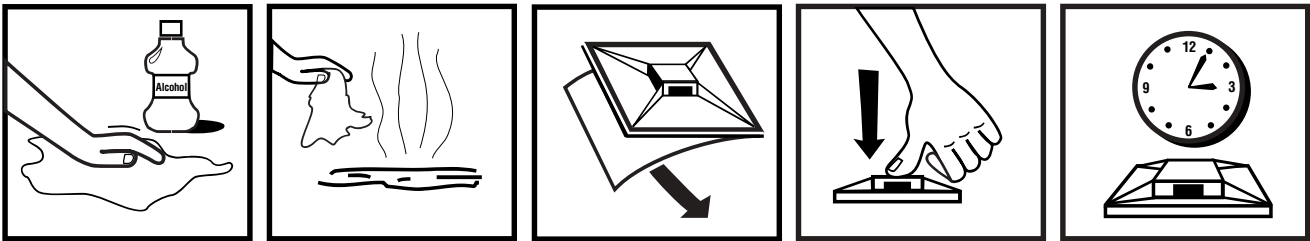
Surface Preparation

For best results, *PANDUIT* adhesive mounts should be applied to clean, dry, grease-free surfaces. We recommend that the surface be cleaned prior to mount installation. For rubber and acrylic based foam tape adhesives, a blend of isopropyl alcohol and water 50/50 may be used to clean most surfaces.

For epoxy type adhesives, especially masonry surfaces, be sure to clean all loose particles away before mount installation. Some surface abrasion is recommended to achieve maximum strength. A light rubbing with medium grit emery cloth or sandpaper is best. Wash after abrading.

Proper Installation Techniques For Pressure Sensitive Adhesive Mounts

For proper installation of adhesive mounts with foam tape, simply remove the release liner and place the mount in the desired location. Avoid touching the adhesive prior to positioning the mount. Apply firm pressure to the mount for 5 seconds to insure proper adhesion.



1) Clean surface with a clean cloth and isopropyl alcohol.

2) Allow surface to air dry.

3) Remove the release liner, being careful not to touch the adhesive.

4) Apply full thumb pressure for at least 5 seconds.

5) Allow mount to properly dwell.

Proper Storage Conditions

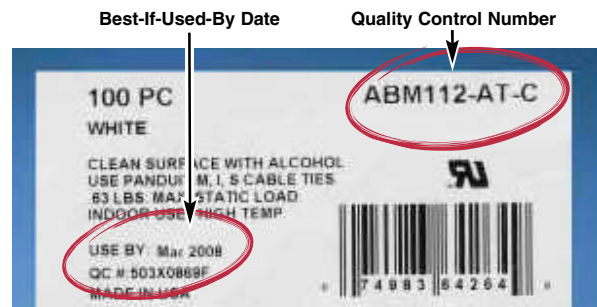
All *PANDUIT* adhesive products have an expiration date printed on the package label. Use the following storage guidelines:

1. For rubber and acrylic based foam tape adhesives, store in temperatures of 70°F (21°C) and 45% Relative Humidity (R.H.).

2. For epoxy type adhesives, store in temperatures of 40°F (4°C) to 75°F (25°C) and relative humidity not in excess of 45%. Storage in opened containers is not recommended. Using the guidelines above, the shelf life of foam tape is 3 years. Shelf life of epoxy is 1 year. Deviation from the recommended storage conditions may reduce the shelf life or adhesive strength. In any case, adhesive products should never be stored near heating vents or other heat sources, and storage in lower temperatures than those recommended may increase the shelf life.

Stock Rotation

Adhesive mount inventory should be rotated in order to insure the quality of the adhesive foam tape. Each package of *PANDUIT* adhesive backed mounts has a Quality Control Number and a best-if-used-by date on the package label. The best-if-used-by date provides the customer with an accurate way to control the rotation of inventory, and, as is the case with all *PANDUIT* products, the Quality Control Number provides complete traceability for all components that go into a specific production run of product.



Mount Removal

There is no simple or easy method for removing *PANDUIT* adhesives. A thin wire or razor blade can be moved in between the surfaces when removing foam tape mounts; however, the adhesive residue will remain on the surface. Epoxy adhesives may be removed with a commercial paint stripping solution.

A. System Overview

B1. Cable Ties

B2. Cable Accessories

B3. Stainless Steel

C1. Wiring Duct

C2. Surface Raceway

C3. Abrasion Protection

C4. Cable Management

D1. Terminals

D2. Power & Grounding Connectors

E1. Labeling System

E2. Labels

E3. Pre-Printed & Write-On Markers

E4. Lockout/Tagout & Safety Solutions

F. Index

A. System Overview

B1. Cable Ties

B2. Cable Accessories

B3. Stainless Steel

C1. Wiring Duct

C2. Surface Raceway

C3. Abrasion Protection

C4. Cable Management

D1. Terminals

D2. Power & Grounding Connectors

E1. Labeling System

E2. Labels

E3. Pre-Printed & Write-On Markers

E4. Lockout/Tagout & Safety Solutions

F. Index

Notes